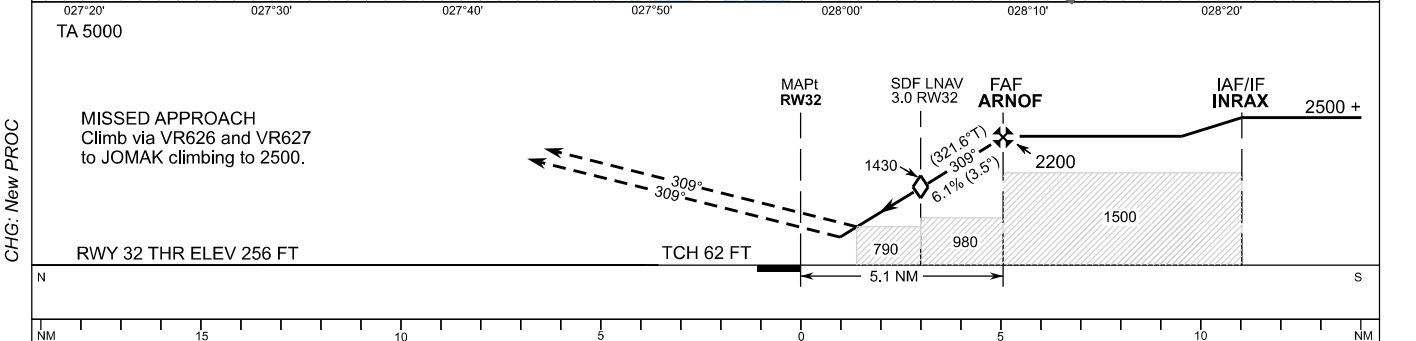
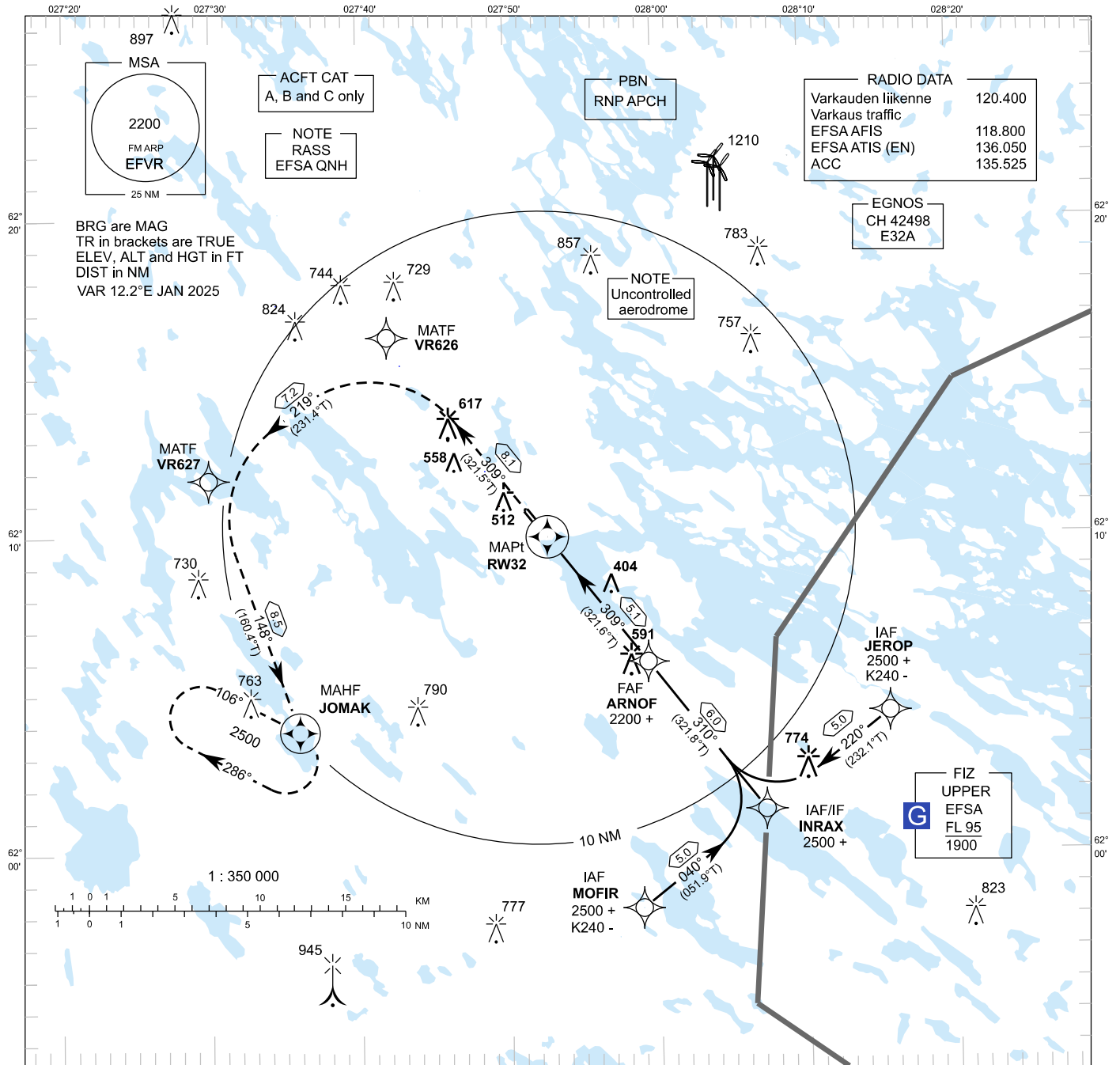


**INSTRUMENT  
APPROACH CHART - ICAO**

ELEV 287 FT  
HEIGHTS RELATED TO  
THR RWY 32 ELEV 256 FT

**RNP RWY 32  
VARKAUS AERODROME  
VARKAUS, FINLAND**



CHG: New PROC

OCA (H)	A	B	C
LPV	622 (366)	637 (381)	649 (393)
LNAV	790 (540)		
NOTE: MNM DH 500 FT			
Circling	950 (670)	1000 (710)	1160 (870)

DIST FM THR	2.0 NM	3.0 NM	4.0 NM			
Altitude (Height)	1160 (810)	1430 (1180)	1800 (1550)			
kt	90	100	120	140	160	
FAF - MAPt 5.1 NM	min:sec	3:23	3:02	2:32	2:10	1:54
Rate of descent	ft/min	560	620	740	870	990

Timing not authorized for defining the MAPt

EFVR RNP RWY 32										
PROC ID NAV SPEC	SEQ NR	P/T	WPT			MAG GEO TR	DIST NM	Turn direction	Constraints	
			ID	Type	Flyover				LVL	Speed
H32 JEROP RNP APCH	005	IF	JEROP	IAF	-	220° 232.1°T	5.0	RIGHT	A2500+	K240-
	010	TF	INRAX	IF	-				310° 321.8°T	6.0
	020	TF	ARNOF	FAF	-	309° 321.6°T	5.1		A2200+	
	030	TF	RW32	MAPt	Y	309° 321.5°T	8.1			
	040	TF	VR626	MATF	-	219° 231.4°T	7.2	LEFT		
	050	TF	VR627	MATF	-	148° 160.4°T	8.5	LEFT		
	060	TF	JOMAK	MAHF	Y				A2500	

EFVR RNP RWY 32										
PROC ID NAV SPEC	SEQ NR	P/T	WPT			MAG GEO TR	DIST NM	Turn direction	Constraints	
			ID	Type	Flyover				LVL	Speed
H32 INRAX RNP APCH	005	IF	INRAX	IAF/IF	-	310° 321.8°T	6.0		A2500+	
	010	TF	ARNOF	FAF	-				309° 321.6°T	5.1
	020	TF	RW32	MAPt	Y	309° 321.5°T	8.1			
	030	TF	VR626	MATF	-	219° 231.4°T	7.2	LEFT		
	040	TF	VR627	MATF	-	148° 160.4°T	8.5	LEFT		
	050	TF	JOMAK	MAHF	Y				A2500	

EFVR RNP RWY 32										
PROC ID NAV SPEC	SEQ NR	P/T	WPT			MAG GEO TR	DIST NM	Turn direction	Constraints	
			ID	Type	Flyover				LVL	Speed
H32 MOFIR RNP APCH	005	IF	MOFIR	IAF	-	040° 051.9°T	5.0	LEFT	A2500+	K240-
	010	TF	INRAX	IF	-				310° 321.8°T	6.0
	020	TF	ARNOF	FAF	-	309° 321.6°T	5.1		A2200+	
	030	TF	RW32	MAPt	Y	309° 321.5°T	8.1			
	040	TF	VR626	MATF	-	219° 231.4°T	7.2	LEFT		
	050	TF	VR627	MATF	-	148° 160.4°T	8.5	LEFT		
	060	TF	JOMAK	MAHF	Y				A2500	

RNAV Holding							
ID	INBD TR	INBD MAG	Turn direction	MAX IAS	MNM HLDG LVL	TIME	DIST NM
JOMAK	117.7°T	106°	Right	K240-	A2500	1 MIN	-

WPT COORD	
ID	COORD
RW32	620958.59N 0275240.50E
JEROP	620423.59N 0281535.12E
INRAX	620120.00N 0280712.09E
MOFIR	615815.08N 0275852.07E
ARNOF	620601.10N 0275922.42E
VR626	621617.51N 0274157.21E
VR627	621148.48N 0272951.84E
JOMAK	620351.61N 0273554.74E

FINAL APPROACH PARAMETERS			
LNAV Gradient	Baro-VNAV		TCH
	VPA	MNM T	
6.12 % (3.50°)	NIL		62 FT

SBAS DATA	
Approach ID	E32A
Service provider	EGNOS
CRC remainder	20C8BF39
Channel number	42498
Data block	EFVR AD 2.15 - 1