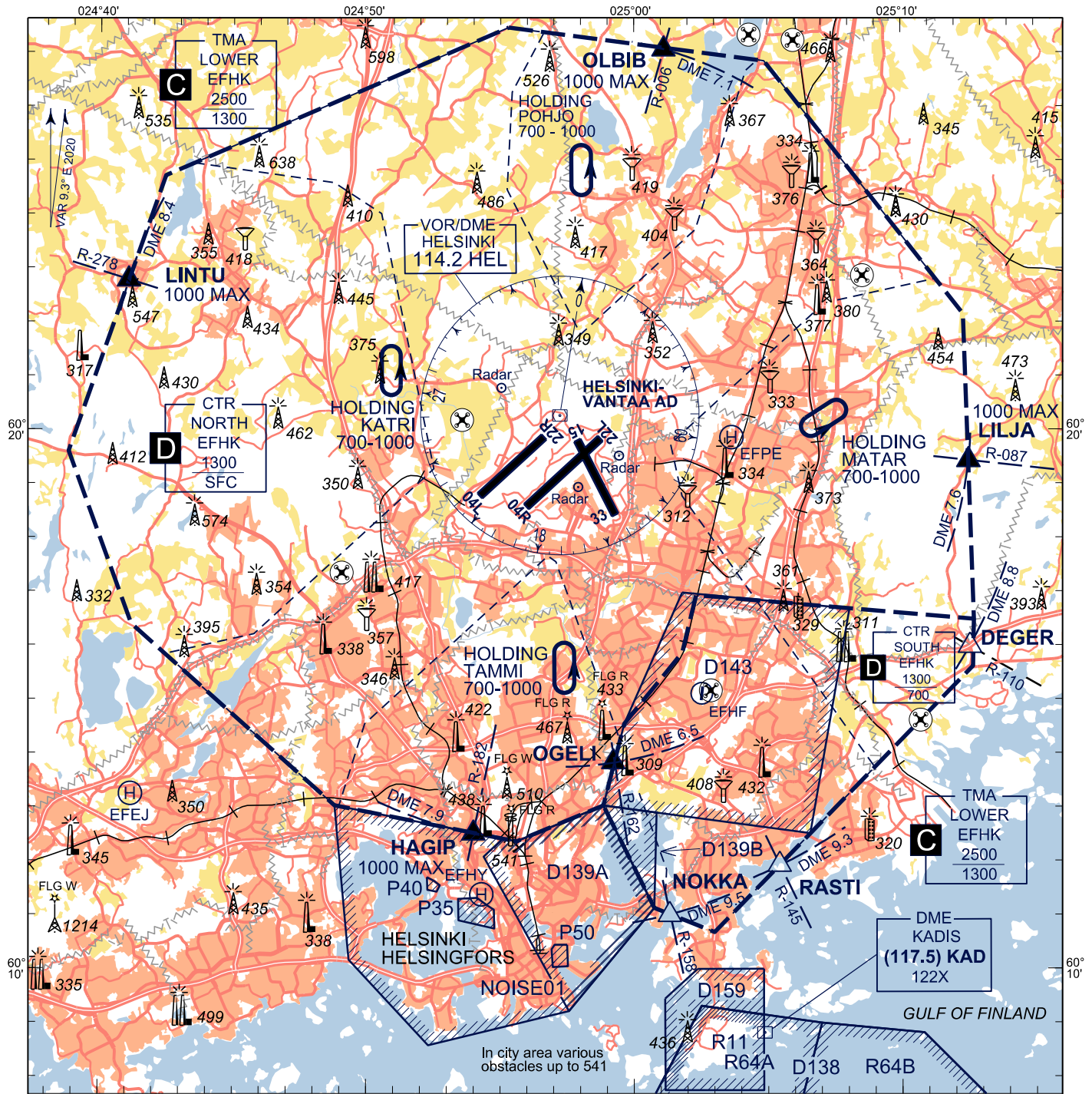


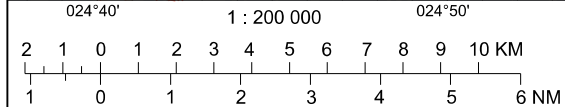
VISUAL
APPROACH CHART - ICAO

ELEV 180 FT

HELSINKI, FINLAND



CHG: ADDN model aircraft flying



RADIO DATA	
APP	119.100
	129.850
	119.700
	119.900
	124.325
TWR	118.600
	118.850
	119.700
GND	121.800
ATIS ARR (EN)	135.075
EMERG	121.500

All RDL and DME FM VOR/DME HEL
BRG are MAG
DIST in NM
ALT and ELEV in FT

Heliport	EFHY	Helsingin yliopistollinen sairaala / Meilahti
	EFEJ	Jorvin sairaala
	EFPE	Peijaksen sairaala

Airspace	Hours of applicability	Airspace class	RMK
EFHK CTR SOUTH	H24	D	TMZ H24
EFHK CTR NORTH	H24	D	TMZ H24
EFHK TMA LOWER	H24	C	TMZ H24

Transponder mandatory for uncontrolled airspace below EFHK TMA LOWER (SFC - 1300 FT MSL)
VFR traffic in EFHK CTR NORTH MAX 1000 FT MSL unless otherwise instructed by ATC.

Inbound clearance includes instructions how to enter traffic circuit and flight altitudes (MNM 700 FT MSL).
TGL exercises not permitted without special reason.

VASIS	
RWY	PAPI MEHT
04L	Left / 3.0° 55
04R	Left / 3.0° 55
15	Left / 3.0° 56
22L	Left / 3.0° 58
22R	Left / 3.0° 51
33	Left / 3.5° 63