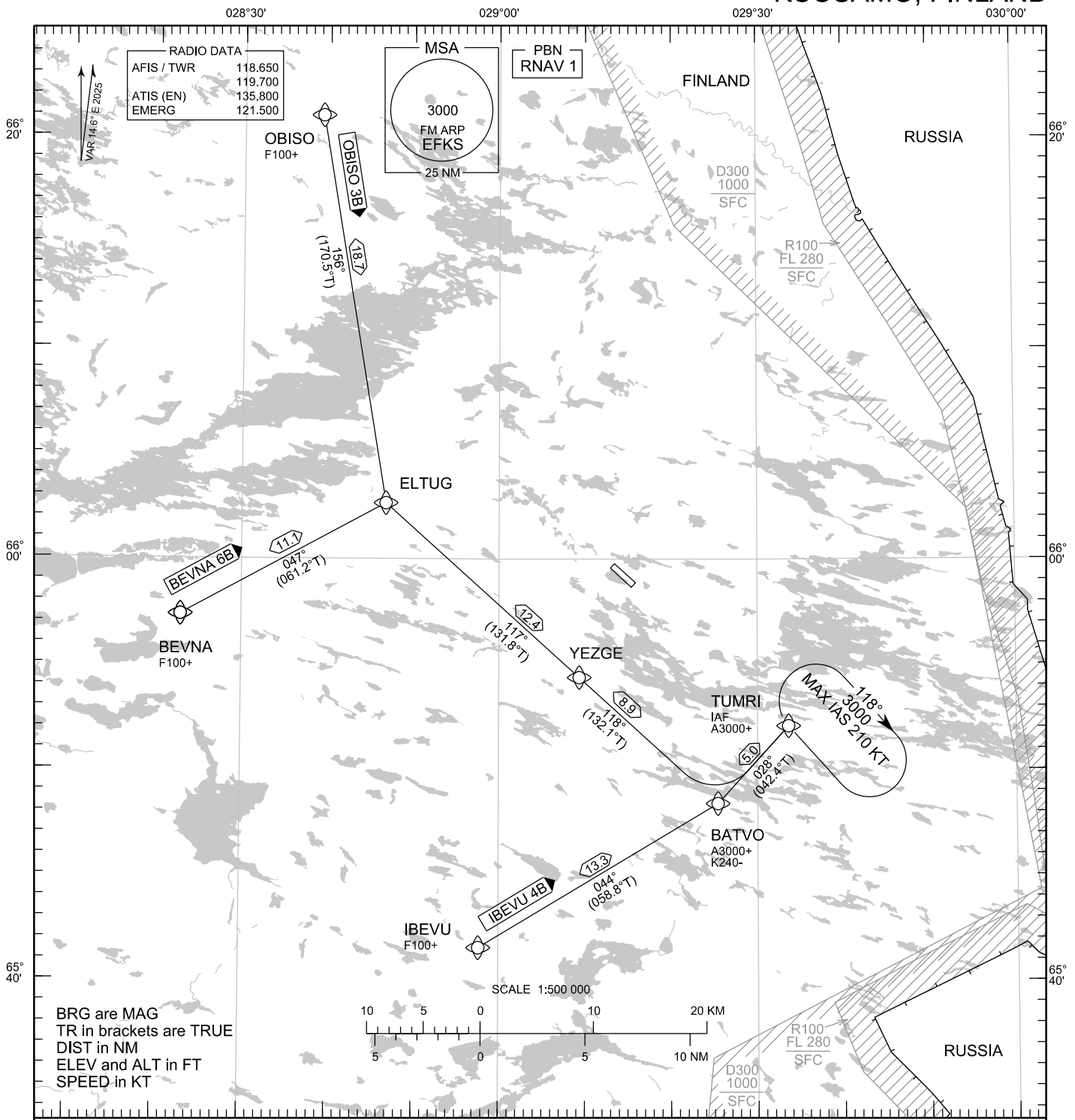


STANDARD ARRIVAL CHART
INSTRUMENT (STAR) - ICAO

TRANSITION ALT
5000

RNAV (GNSS) STAR RWY 30
KUUSAMO AERODROME
KUUSAMO, FINLAND



RNAV STAR RWY 30

BEVNA 6B IBEVU 4B OBISO 3B

DME/DME OPS: NOT SUPPORTED

AREA MNM ALT:

SEE AMA INDEX, AIP ENR 6.1 - 3

ROUTES: RNAV PROC CODING ON THE VERSO OF THE CHART
ATC WILL GIVE DESCENT CLEARANCES

WPT CONSTRAINTS: ALT / FL / SPEED CONSTRAINTS MUST ALWAYS BE
FOLLOWED AS PUBLISHED UNLESS EXPLICITLY CANCELLED
BY ATC

CD OPS: BY ATC CLR IF TFC PERMITS. PLAN CD PATH ACCORDING
TO STAR

RCF: SELECT TRANSPONDER CODE 7600

RNAV STAR HAS BEEN GIVEN AND ACKNOWLEDGED:
FOLLOW THE STAR TO THE RESPECTIVE RWY AND
EXECUTE IAP AND LAND

CHG: MAG VAR

EFKS RNAV STAR RWY 30										
RTE NAV SPEC	SEQ NR	P/T	WPT		MAG	GEO TR	DIST NM	Constraints		
			ID	Flyover				LVL	LVL	Speed
BEVNA 6B RNAV 1	010	IF	BEVNA	-	-	-	-	F100+		
	020	TF	ELTUG	-	047°	061.2°T	11.1			
	030	TF	YEZGE	-	117°	131.8°T	12.4			
	040	TF	BATVO	-	118°	132.1°T	8.9	A3000+		K240-
	050	TF	TUMRI	-	028°	042.4°T	5.0	A3000+		

IBEVU 4B RNAV 1	010	IF	IBEVU	-	-	-	-	F100+		
	020	TF	BATVO	-	044°	058.8°T	13.3	A3000+		K240-
	030	TF	TUMRI	-	028°	042.4°T	5.0	A3000+		

OBISO 3B RNAV 1	010	IF	OBISO	-	-	-	-	F100+		
	020	TF	ELTUG	-	156°	170.5°T	18.7			
	030	TF	YEZGE	-	117°	131.8°T	12.4			
	040	TF	BATVO	-	118°	132.1°T	8.9	A3000+		K240-
	050	TF	TUMRI	-	028°	042.4°T	5.0	A3000+		

RNAV Holdings							
ID	INBD TR	INBD MAG	Turn Direction	Speed	MNM HLDG LVL	TIME	DIST NM
TUMRI	312.2°T	298°	Right	K210-	A3000	1 MIN	-

WPT COORD
SEE PAGE EFKS AD 2.15 - 1