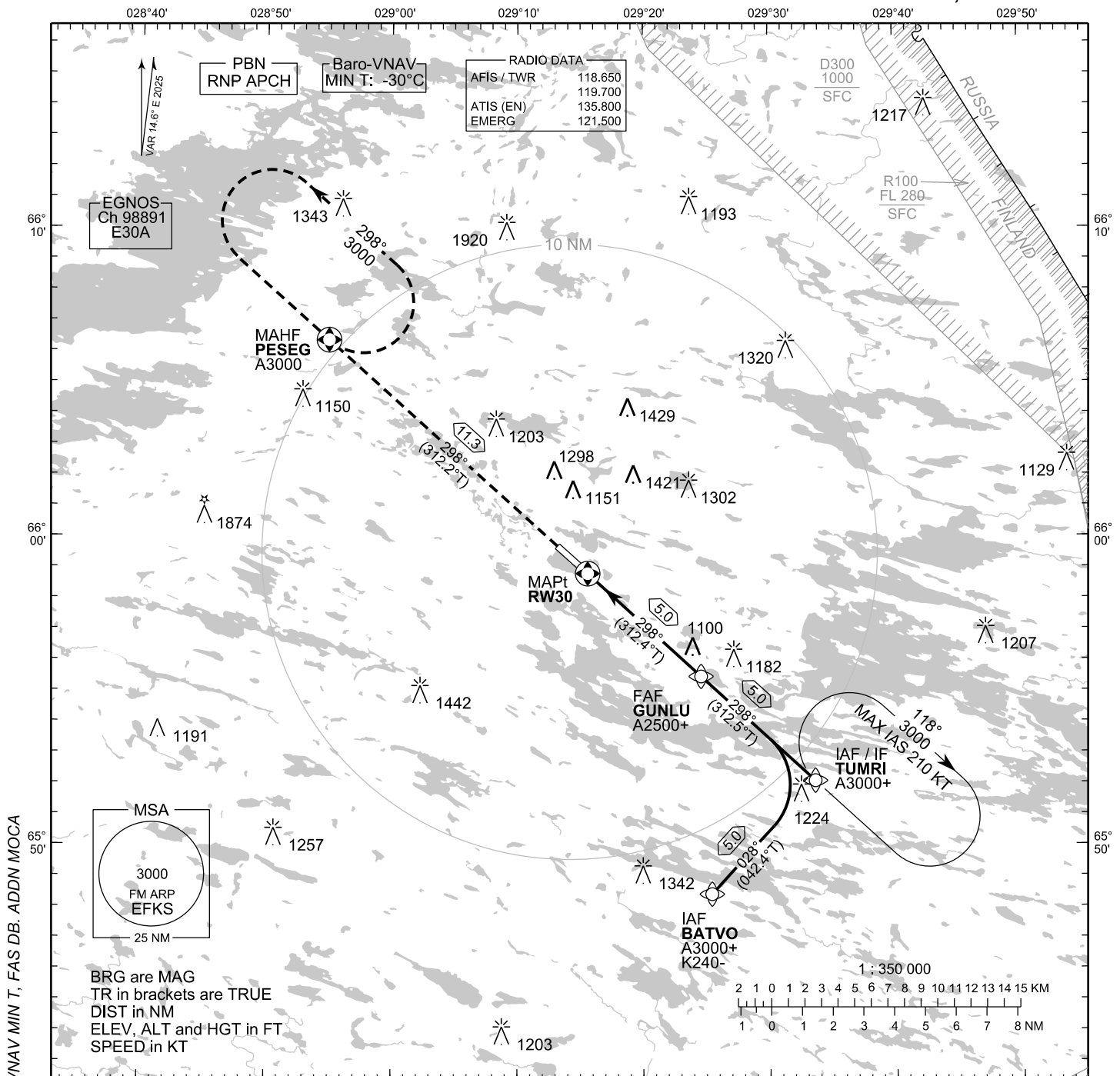


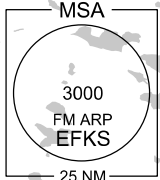
**INSTRUMENT
APPROACH CHART - ICAO**

ELEV 868 FT
HEIGHTS RELATED TO
THR RWY 30 ELEV 866 FT

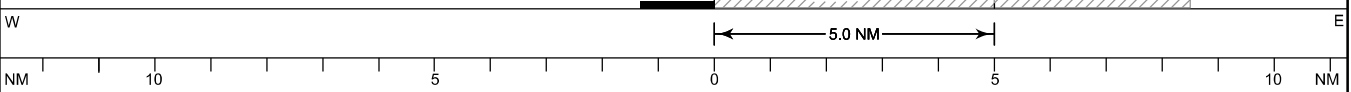
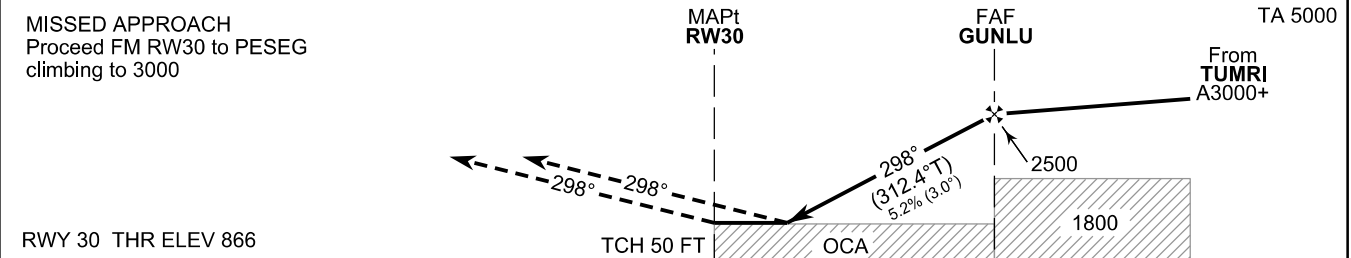
**RNP RWY 30
KUUSAMO AERODROME
KUUSAMO, FINLAND**



CHG: MAG VAR, OCA(H), Baro-VNAV MIN T, FAS DB, ADDN MOCA



BRG are MAG
TR in brackets are TRUE
DIST in NM
ELEV, ALT and HGT in FT
SPEED in KT



OCA (H)	A	B	C	D
LPV	1107 (241)	1119 (253)	1132 (266)	1143 (277)
LNAV/VNAV	1180 (314)	1192 (326)	1200 (334)	1210 (344)
LNAV	1350 (480)			
Circling	1450 (580)	1600 (730)	1820 (950)	1830 (960)

DIST FM THR	2.0 NM	3.0 NM	4.0 NM	5.0 NM		
Altitude (Height)	1550 (690)	1870 (1010)	2190 (1320)	2510 (1640)		
	kt	90	100	120	140	160
FAF - MAPt 5.0 NM	min:sec	3:19	2:59	2:29	2:08	1:52
Rate of descent	ft/min	480	530	640	740	850

Timing not authorized for defining the MAPt

EFKS RNP RWY 30										
PROC ID NAV SPEC	SEQ NR	P/T	WPT			MAG	GEO TR	DIST NM	Constraints	
			ID	Type	Flyover				LVL	Speed
H30 BATVO RNP APCH	005	IF	BATVO	IAF	-	028°	042.4°T	5.0	A3000+	K240-
	010	TF	TUMRI	IF	-				A3000+	
	020	TF	GUNLU	FAF	-	298°	312.5°T	5.0	A2500+	
	030	TF	RW30	MAPt	Y	298°	312.4°T	5.0		
	040	TF	PESEG	MAHF	Y	298°	312.2°T	11.3	A3000	

EFKS RNP RWY 30										
PROC ID NAV SPEC	SEQ NR	P/T	WPT			MAG	GEO TR	DIST NM	Constraints	
			ID	Type	Flyover				LVL	Speed
H30 TUMRI RNP APCH	010	IF	TUMRI	IAF/IF	-	298°	312.5°T	5.0	A3000+	
	020	TF	GUNLU	FAF	-				A2500+	
	030	TF	RW30	MAPt	Y	298°	312.4°T	5.0		
	040	TF	PESEG	MAHF	Y	298°	312.2°T	11.3	A3000	

RNAV Holdings							
ID	INBD TR	INBD MAG	Turn Direction	Speed	MNM HLDG LVL	TIME	DIST NM
TUMRI	312.2°T	298°	Right	K210-	A3000	1 MIN	-
PESEG	132.2°T	118°	Left	K230-	A3000	1 MIN	-

WPT COORD
SEE PAGE EFKS AD 2.15 - 1

FINAL APPROACH PARAMETERS			
LNAV Gradient	Baro-VNAV		TCH
	VPA	MNM T	
5.24 % (3.00°)	3.00°	-30°C	50 FT

SBAS DATA	
Approach ID	E30A
Service Provider	EGNOS
CRC remainder	8A E5 DD EF
Channel number	98891
Data Block	SEE EFKS AD 2.15 - 3