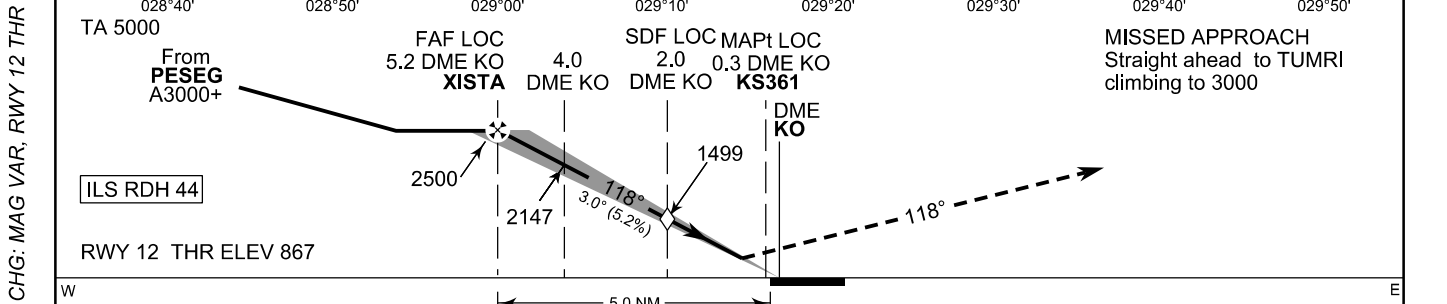
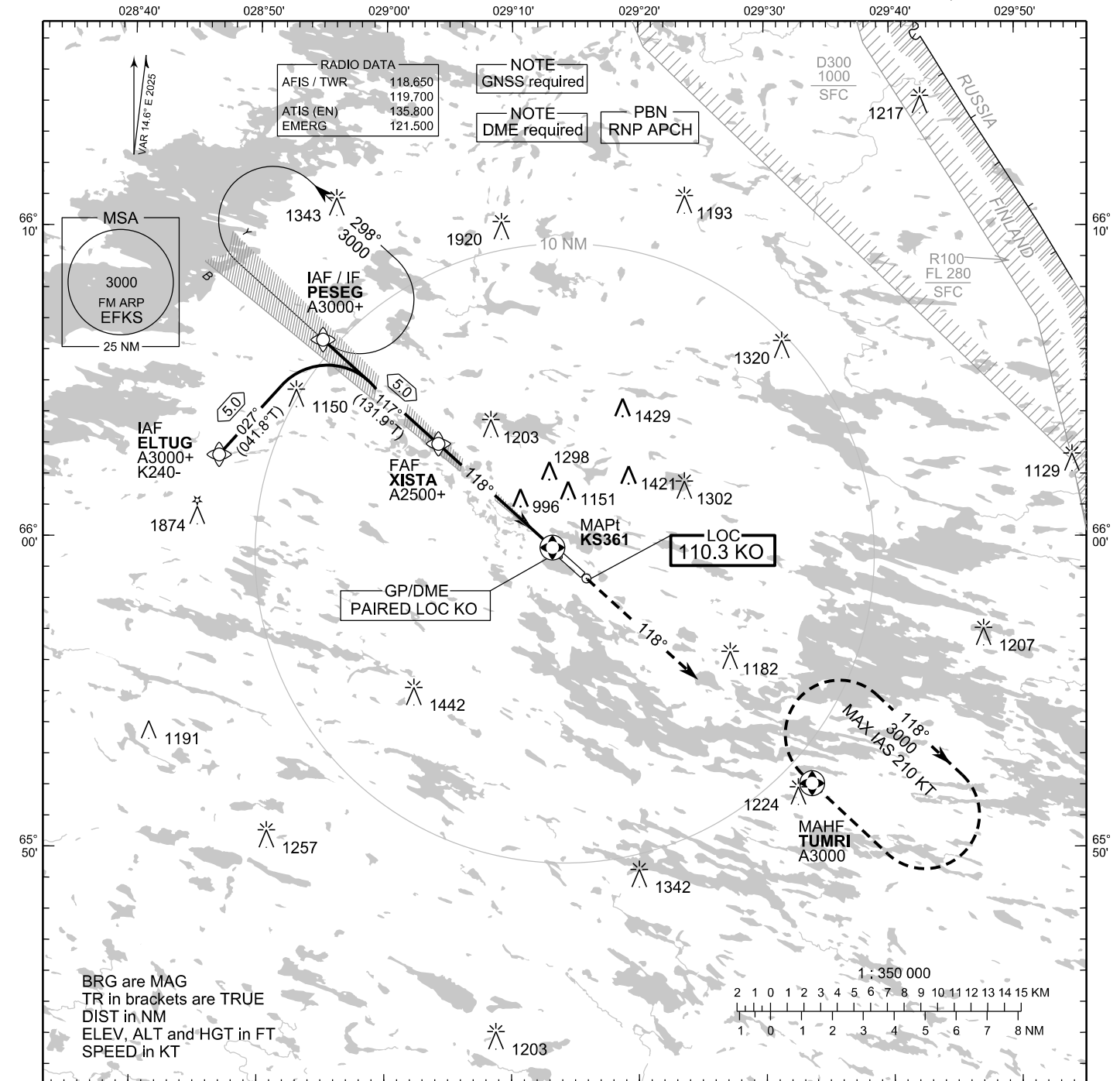


**INSTRUMENT  
APPROACH CHART - ICAO**

ELEV 868 FT  
HEIGHTS RELATED TO  
THR RWY 12 ELEV 867 FT

**ILS or LOC RWY 12  
KUUSAMO AERODROME  
KUUSAMO, FINLAND**



NM	10	5	0	5	10	NM
OCA (H)	A	B	C	D		
ILS CAT I	1031 (164)	1040 (173)	1049 (182)	1059 (192)		
LOC	1250 (380)					
LOC W/O SDF	1500 (630)					
Circling	1450 (580)	1600 (730)	1820 (950)	1830 (960)		

	kt	90	100	120	140	160
FAF - MAPt 4.9 NM	min:sec	3:15	2:55	2:26	2:05	1:50
Rate of descent	ft/min	480	530	640	740	850

Timing not authorized for defining the MAPt

EFKS ILS or LOC RWY 12										
PROC ID NAV SPEC	SEQ NR	P/T	WPT			MAG	GEO TR	DIST NM	Constraints	
			ID	Type	Flyover				LVL	Speed
I12 PESEG RNP APCH	010	IF	PESEG	IAF/IF	-	117°	131.9°T	5.0	A3000+	
	020	TF	XISTA	FAF LOC	-				A2500+	
	030	TF	KS361	MAPt LOC	Y	118°	132.6°T	-	A1300+	
	040	CA	-	-	-					
	050	DF	TUMRI	MAHF	Y	-	-	-	A3000	

EFKS ILS or LOC RWY 12										
PROC ID NAV SPEC	SEQ NR	P/T	WPT			MAG	GEO TR	DIST NM	Constraints	
			ID	Type	Flyover				LVL	Speed
I12 ELTUG RNP APCH	005	IF	ELTUG	IAF	-	027°	041.8°T	5.0	A3000+	K240-
	010	TF	PESEG	IF	-				A3000+	
	020	TF	XISTA	FAF LOC	-	117°	131.9°T	5.0	A2500+	
	030	TF	KS361	MAPt LOC	Y	118°	132.6°T	-	A1300+	
	040	CA	-	-	-					
	050	DF	TUMRI	MAHF	Y	-	-	-	A3000	

RNAV Holdings							
ID	INBD TR	INBD MAG	Turn Direction	Speed	MNM HLDG LVL	TIME	DIST NM
PESEG	132.2°T	118°	Left	K230-	A3000	1 MIN	-
TUMRI	312.2°T	298°	Right	K210-	A3000	1 MIN	-

WPT COORD
SEE PAGE EFKS AD 2.15 - 1

FINAL APPROACH PARAMETERS			
LOC Gradient	ILS		RDH
	CAT	GPA	
5.24 % (3.00°)	I	3.00°	44 FT