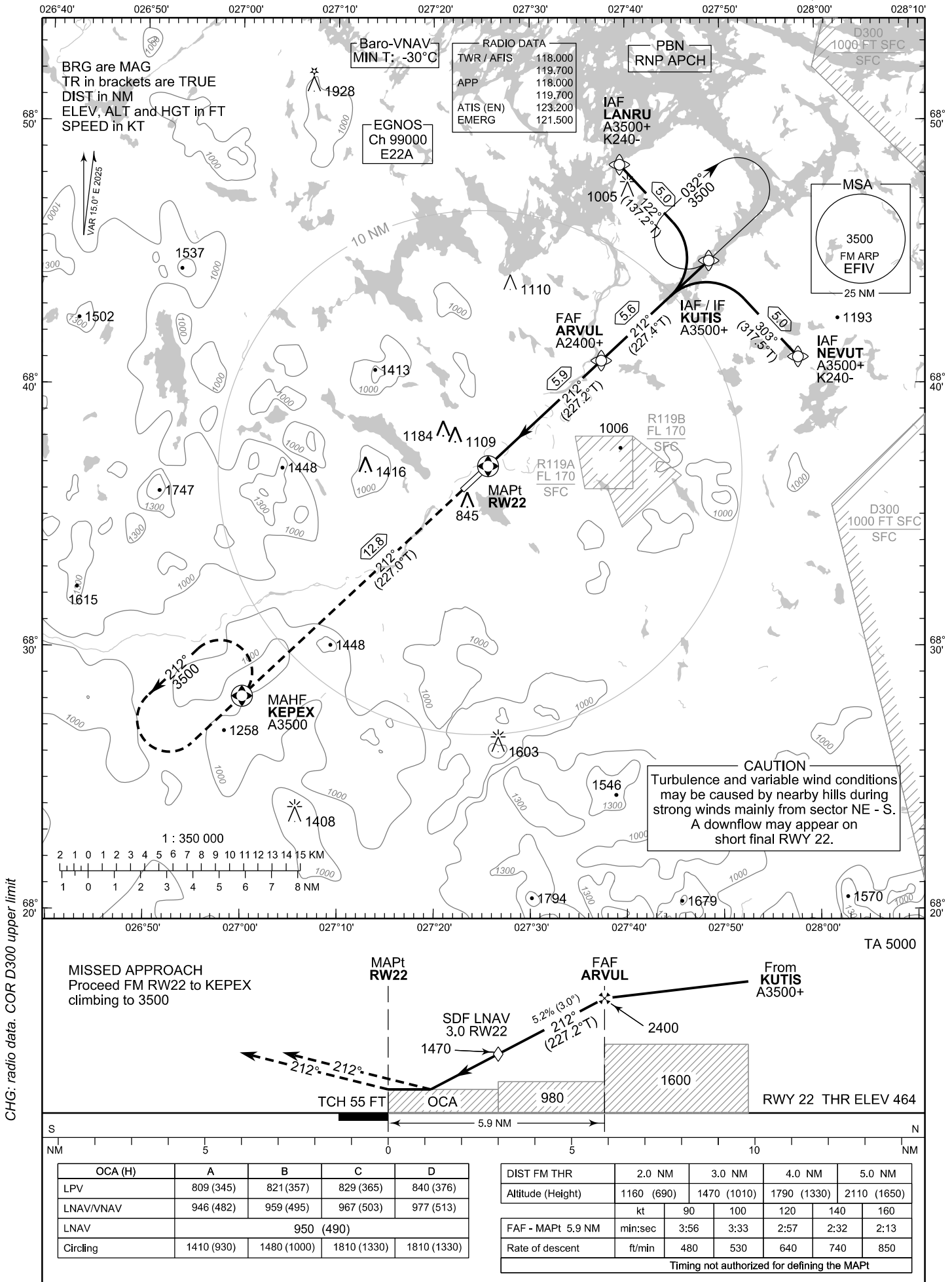


**INSTRUMENT APPROACH CHART - ICAO**

ELEV 482 FT  
HEIGHTS RELATED TO  
THR RWY 22 ELEV 464 FT

**RNP RWY 22  
IVALO AERODROME  
IVALO, FINLAND**



EFIV RNP RWY 22										
PROC ID NAV SPEC	SEQ NR	P/T	WPT			MAG	GEO TR	DIST NM	Constraints	
			ID	Type	Flyover				LVL	Speed
H22 NEVUT RNP APCH	005	IF	NEVUT	IAF	-	303°	317.5°T	5.0	A3500+	K240-
	010	TF	KUTIS	IF	-					
	020	TF	ARVUL	FAF	-	212°	227.4°T	5.6	A2400+	
	030	TF	RW22	MAPt	Y	212°	227.2°T	5.9		
	040	TF	KEPEX	MAHF	Y	212°	227.0°T	12.8	A3500	

EFIV RNP RWY 22										
PROC ID NAV SPEC	SEQ NR	P/T	WPT			MAG	GEO TR	DIST NM	Constraints	
			ID	Type	Flyover				LVL	Speed
H22 KUTIS RNP APCH	010	IF	KUTIS	IAF/IF	-	212°	227.4°T	5.6	A3500+	
	020	TF	ARVUL	FAF	-					
	030	TF	RW22	MAPt	Y	212°	227.2°T	5.9	A2400+	
	040	TF	KEPEX	MAHF	Y	212°	227.0°T	12.8	A3500	

EFIV RNP RWY 22										
PROC ID NAV SPEC	SEQ NR	P/T	WPT			MAG	GEO TR	DIST NM	Constraints	
			ID	Type	Flyover				LVL	Speed
H22 LANRU RNP APCH	005	IF	LANRU	IAF	-	122°	137.2°T	5.0	A3500+	K240-
	010	TF	KUTIS	IF	-					
	020	TF	ARVUL	FAF	-	212°	227.4°T	5.6	A2400+	
	030	TF	RW22	MAPt	Y	212°	227.2°T	5.9		
	040	TF	KEPEX	MAHF	Y	212°	227.0°T	12.8	A3500	

RNAV Holdings							
ID	INBD TR	INBD MAG	Turn Direction	Speed	MNM HLDG LVL	TIME	DIST NM
KUTIS	227.0°T	212°	Right	K230-	A3500	1 MIN	-
KEPEX	047.0°T	032°	Left	K230-	A3500	1 MIN	-

WPT COORD
SEE PAGE EFIV AD 2.15 - 1

FINAL APPROACH PARAMETERS			
LNAV Gradient	Baro-VNAV		TCH
	VPA	MNM T	
5.24 % (3.00°)	3.00°	-30°C	55 FT

SBAS DATA	
Approach ID	E22A
Service Provider	EGNOS
CRC remainder	1F 5B 5A E2
Channel number	99000
Data Block	SEE EFIV AD 2.15 - 3