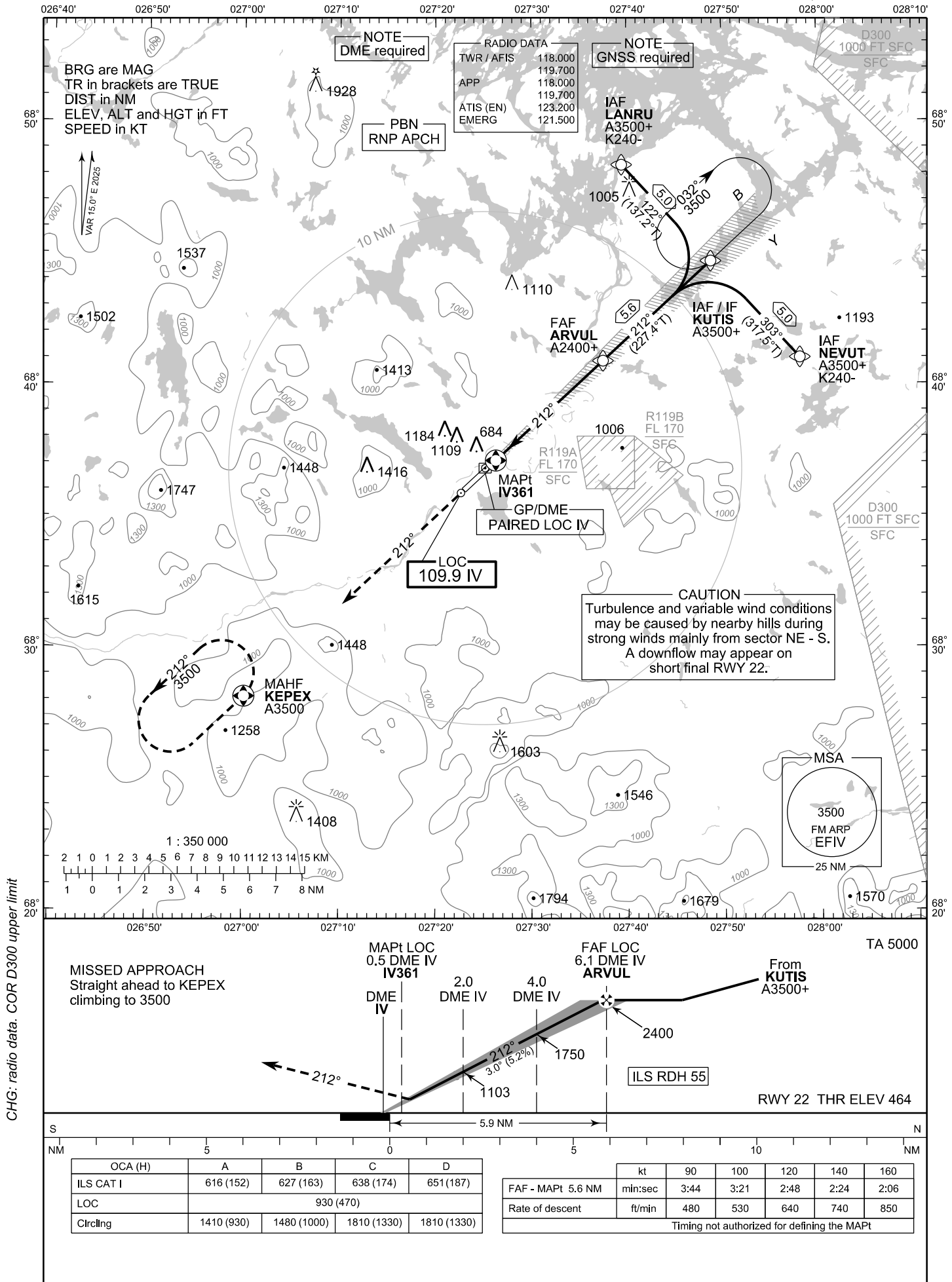


**INSTRUMENT
APPROACH CHART - ICAO**

ELEV 482 FT
HEIGHTS RELATED TO
THR RWY 22 ELEV 464 FT

**ILS or LOC RWY 22
IVALO AERODROME
IVALO, FINLAND**



EFIV ILS or LOC RWY 22										
PROC ID NAV SPEC	SEQ NR	P/T	WPT			MAG	GEO TR	DIST NM	Constraints	
			ID	Type	Flyover				LVL	Speed
I22 NEVUT RNP APCH	005	IF	NEVUT	IAF	-	303°	317.5°T	5.0	A3500+	K240-
	010	TF	KUTIS	IF	-				212°	227.4°T
	020	TF	ARVUL	FAF LOC	-	A2400+				
	030	TF	IV361	MAPt LOC	Y	212°	227.0°T	-		
	040	CA	-	-	-				A1500+	
	050	TF	KEPEX	MAHF	Y	-	-	-	A3500	

EFIV ILS or LOC RWY 22										
PROC ID NAV SPEC	SEQ NR	P/T	WPT			MAG	GEO TR	DIST NM	Constraints	
			ID	Type	Flyover				LVL	Speed
I22 KUTIS RNP APCH	010	IF	KUTIS	IAF/IF	-	212°	227.4°T	5.6	A3500+	
	020	TF	ARVUL	FAF LOC	-				A2400+	
	030	TF	IV361	MAPt LOC	Y	212°	227.0°T	-		
	040	CA	-	-	-				A1500+	
	050	TF	KEPEX	MAHF	Y	-	-	-	A3500	

EFIV ILS or LOC RWY 22										
PROC ID NAV SPEC	SEQ NR	P/T	WPT			MAG	GEO TR	DIST NM	Constraints	
			ID	Type	Flyover				LVL	Speed
I22 LANRU RNP APCH	005	IF	LANRU	IAF	-	122°	137.2°T	5.0	A3500+	K240-
	010	TF	KUTIS	IF	-				212°	227.4°T
	020	TF	ARVUL	FAF LOC	-	A2400+				
	030	TF	IV361	MAPt LOC	Y	212°	227.0°T	-		
	040	CA	-	-	-				A1500+	
	050	TF	KEPEX	MAHF	Y	-	-	-	A3500	

RNAV Holdings							
ID	INBD TR	INBD MAG	Turn Direction	Speed	MNM HLDG LVL	TIME	DIST NM
KUTIS	227.0°T	212°	Right	K230-	A3500	1 MIN	-
KEPEX	047.0°T	032°	Left	K230-	A3500	1 MIN	-

WPT COORD
SEE PAGE EFIV AD 2.15 - 1

FINAL APPROACH PARAMETERS			
LOC Gradient	ILS		RDH
	CAT	GPA	
5.24 % (3.00°)	I	3.00°	55 FT