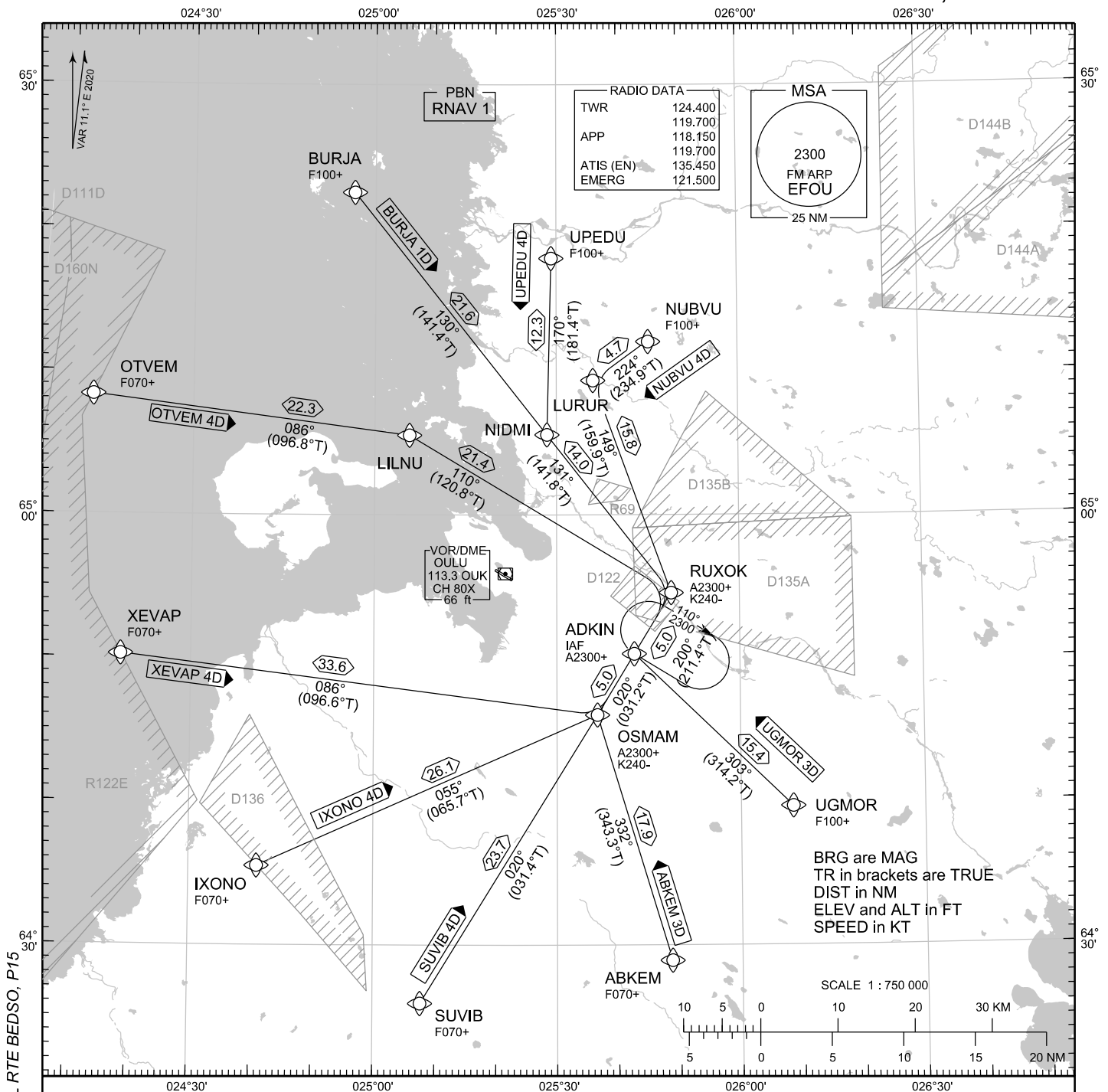


STANDARD ARRIVAL CHART
INSTRUMENT (STAR) - ICAO

TRANSITION ALT
5000

RNAV (GNSS) STAR RWY 30
OULU AERODROME
OULU, FINLAND



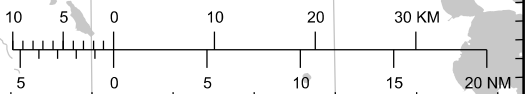
CHG: ADDN RTE BURJA. DEL RTE BEDSO, P15

RNAV STAR RWY 30

ABKEM 3D BURJA 1D IXONO 4D NUBVU 4D OTVEM 4D SUVIB 4D UGMOR 3D UPEDU 4D XEVAP 4D

- DME/DME OPS: NOT SUPPORTED
- ROUTES: RNAV PROC CODING ON THE VERSO OF THE CHART
ATC WILL GIVE DESCENT CLEARANCES
- WPT CONSTRAINTS: ALT / FL / SPEED CONSTRAINTS MUST ALWAYS BE FOLLOWED AS
PUBLISHED UNLESS EXPLICITLY CANCELLED BY ATC
- CD OPS: BY ATC CLR IF TFC PERMITS. PLAN CD PATH ACCORDING TO STAR
- NOISE ABATEMENT: AVOID OVERFLYING THE CITY OF OULU BELOW 2000
- RCF: SELECT TRANSPONDER CODE 7600
- RNAV STAR HAS BEEN GIVEN AND ACKNOWLEDGED: FOLLOW THE
STAR TO THE RESPECTIVE RWY AND EXECUTE IAP AND LAND
- DURING RADAR VECTORED BEFORE IAF: IN ACCORDANCE WITH
THE RULES OF THE AIR
- AREA MNM ALT: SEE AMA INDEX, AIP ENR 6.1-3

SCALE 1 : 750 000



EFOU RNAV STAR RWY 30										
RTE NAV SPEC	SEQ NR	P/T	WPT		MAG	GEO TR	DIST NM	Constraints		
			ID	Flyover				LVL	LVL	Speed
ABKEM 3D RNAV 1	010	IF	ABKEM	-	-	-	-	F070+		
	020	TF	OSMAM	-	332°	343.3°T	17.9	A2300+		K240-
	030	TF	ADKIN	-	020°	031.2°T	5.0	A2300+		

BURJA 1D RNAV 1	010	IF	BURJA	-	-	-	-	F100+		
	020	TF	NIDMI	-	130°	141.4°T	21.6			
	030	TF	RUXOK	-	131°	141.8°T	14.0	A2300+		K240-
	040	TF	ADKIN	-	200°	211.4°T	5.0	A2300+		

IXONO 4D RNAV 1	010	IF	IXONO	-	-	-	-	F070+		
	020	TF	OSMAM	-	055°	065.7°T	26.1	A2300+		K240-
	030	TF	ADKIN	-	020°	031.2°T	5.0	A2300+		

NUBVU 4D RNAV 1	010	IF	NUBVU	-	-	-	-	F100+		
	020	TF	LURUR	-	224°	234.9°T	4.7			
	030	TF	RUXOK	-	149°	159.9°T	15.8	A2300+		K240-
	040	TF	ADKIN	-	200°	211.4°T	5.0	A2300+		

OTVEM 4D RNAV 1	010	IF	OTVEM	-	-	-	-	F070+		
	020	TF	LILNU	-	086°	096.8°T	22.3			
	030	TF	RUXOK	-	110°	120.8°T	21.4	A2300+		K240-
	040	TF	ADKIN	-	200°	211.4°T	5.0	A2300+		

SUVID 4D RNAV 1	010	IF	SUVID	-	-	-	-	F070+		
	020	TF	OSMAM	-	020°	031.4°T	23.7	A2300+		K240-
	030	TF	ADKIN	-	020°	031.2°T	5.0	A2300+		

UGMOR 3D RNAV 1	010	IF	UGMOR	-	-	-	-	F100+		
	020	TF	ADKIN	-	303°	314.2°T	15.4	A2300+		

UPEDU 4D RNAV 1	010	IF	UPEDU	-	-	-	-	F100+		
	020	TF	NIDMI	-	170°	181.4°T	12.3			
	030	TF	RUXOK	-	131°	141.8°T	14.0	A2300+		K240-
	040	TF	ADKIN	-	200°	211.4°T	5.0	A2300+		

XEVA 4D RNAV 1	010	IF	XEVA	-	-	-	-	F070+		
	020	TF	OSMAM	-	086°	096.6°T	33.6	A2300+		K240-
	030	TF	ADKIN	-	020°	031.2°T	5.0	A2300+		

RNAV Holdings							
ID	INBD TR	INBD MAG	Turn Direction	Speed	MNM HLDG LVL	TIME	DIST NM
ADKIN	301.0°T	290°	Right	K230-	A2300	1 MIN	-

WPT COORD
SEE PAGE EFOU AD 2.15 - 1