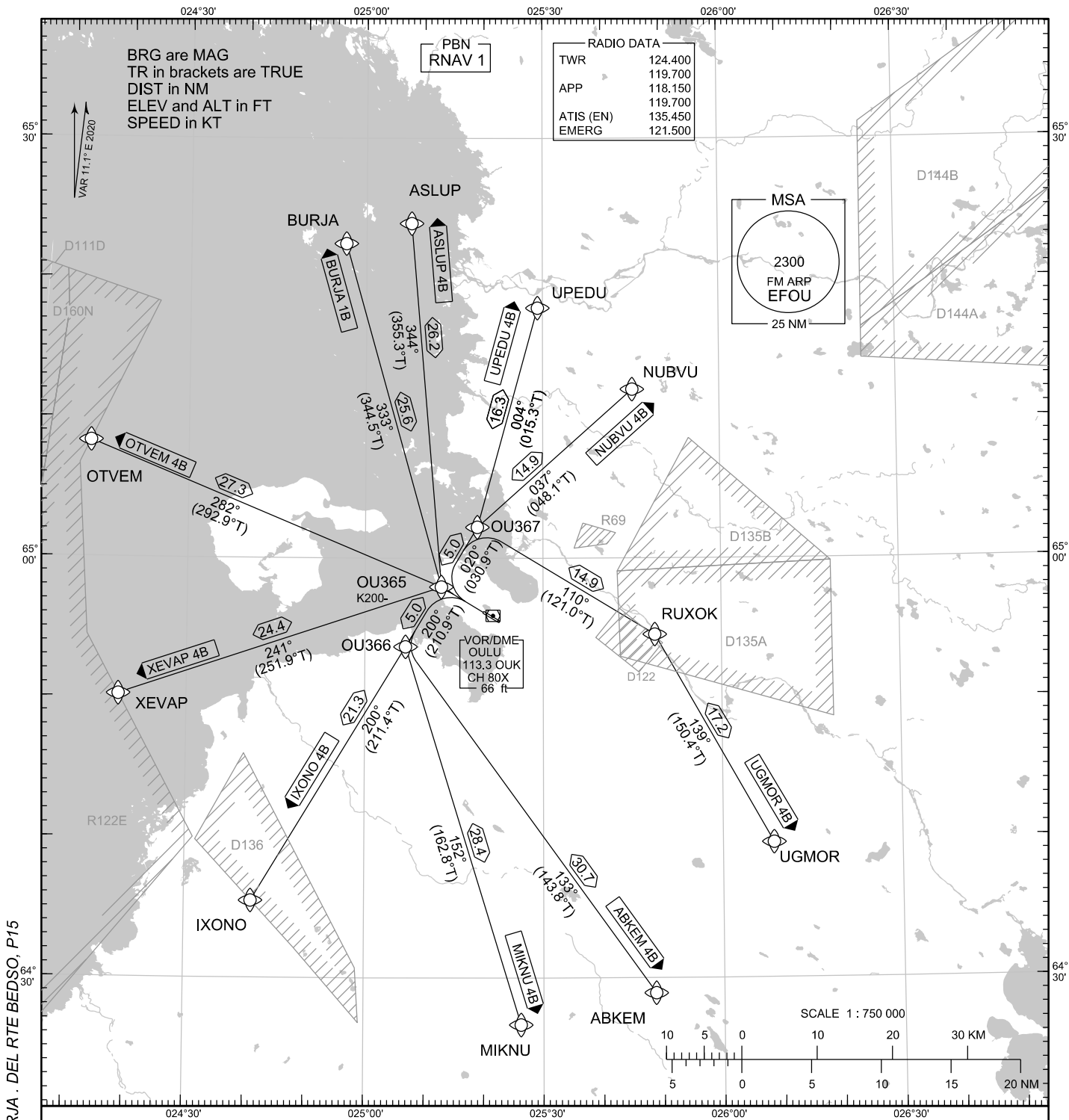


STANDARD DEPARTURE CHART  
INSTRUMENT (SID) - ICAO

TRANSITION ALT  
5000

RNAV<sup>(GNSS)</sup> SID RWY 30  
OULU AERODROME  
OULU, FINLAND



CHG: ADDN RTE BURJA . DEL RTE BEDSO, P15

RNAV SID RWY 30

ABKEM 4B ASLUP 4B BURJA 1B IXONO 4B MIKNU 4B NUBVU 4B OTVEM 4B UGMOR 4B UPEDU 4B XEVAP 4B

DME/DME OPS: NOT SUPPORTED

ROUTES: RNAV PROC CODING ON THE VERSO OF THE CHART

SQUAWK: WHEN LINING UP SQUAWK THE ASSIGNED CODE

INITIAL CLIMB: MNM TURNING ALT ACCORDING TO RTE CODING

NOISE ABATEMENT: AFTER TAKE-OFF CLIMB AS RAPIDLY AS POSSIBLE TO AT LEAST 2000 FT ABOVE AD ELEV  
PUBLISHED SID ROUTES ARE ALSO MINIMUM NOISE ROUTINGS

AREA MNM ALT: SEE AMA INDEX, AIP ENR 6.1 - 3

EFOU RNAV SID RWY 30										
RTE NAV SPEC	SEQ NR	P/T	WPT		MAG	GEO TR	DIST NM	Turn Direction	Constraints	
			ID	Flyover					LVL	Speed
ABKEM 4B RNAV 1	010	CA	-	-	290°	301.1°T	-		A450+	
	020	DF	OU365	-	-	-	-			K200-
	030	TF	OU366	-	200°	210.9°T	5.0	L		
	040	TF	ABKEM	-	133°	143.8°T	30.7			
ASLUP 4B RNAV 1	010	CA	-	-	290°	301.1°T	-		A450+	
	020	DF	OU365	-	-	-	-			K200-
	030	TF	ASLUP	-	344°	355.3°T	26.2			
BURJA 1B RNAV 1	010	CA	-	-	290°	301.1°T	-		A450+	
	020	DF	OU365	-	-	-	-			K200-
	030	TF	BURJA	-	333°	344.5°T	25.6			
IXONO 4B RNAV 1	010	CA	-	-	290°	301.1°T	-		A450+	
	020	DF	OU365	-	-	-	-			K200-
	030	TF	OU366	-	200°	210.9°T	5.0			
	040	TF	IXONO	-	200°	211.4°T	21.3			
MIKNU 4B RNAV 1	010	CA	-	-	290°	301.1°T	-		A450+	
	020	DF	OU365	-	-	-	-			K200-
	030	TF	OU366	-	200°	210.9°T	5.0	L		
	040	TF	MIKNU	-	152°	162.8°T	28.4			
NUBVU 4B RNAV 1	010	CA	-	-	290°	301.1°T	-		A450+	
	020	DF	OU365	-	-	-	-			K200-
	030	TF	OU367	-	020°	030.9°T	5.0			
	040	TF	NUBVU	-	037°	048.1°T	14.9			
OTVEM 4B RNAV 1	010	CA	-	-	290°	301.1°T	-		A450+	
	020	DF	OU365	-	-	-	-			K200-
	030	TF	OTVEM	-	282°	292.9°T	27.3			
UGMOR 4B RNAV 1	010	CA	-	-	290°	301.1°T	-		A450+	
	020	DF	OU365	-	-	-	-			K200-
	030	TF	OU367	-	020°	030.9°T	5.0	R		
	040	TF	RUXOK	-	110°	121.0°T	14.9	R		
	050	TF	UGMOR	-	139°	150.4°T	17.2			
UPEDU 4B RNAV 1	010	CA	-	-	290°	301.1°T	-		A450+	
	020	DF	OU365	-	-	-	-			K200-
	030	TF	OU367	-	020°	030.9°T	5.0			
	040	TF	UPEDU	-	004°	015.3°T	16.3			
XEVAP 4B RNAV 1	010	CA	-	-	290°	301.1°T	-		A450+	
	020	DF	OU365	-	-	-	-			K200-
	030	TF	XEVAP	-	241°	251.9°T	24.4			

**WPT COORD**

SEE PAGE EFOU AD 2.15 - 1