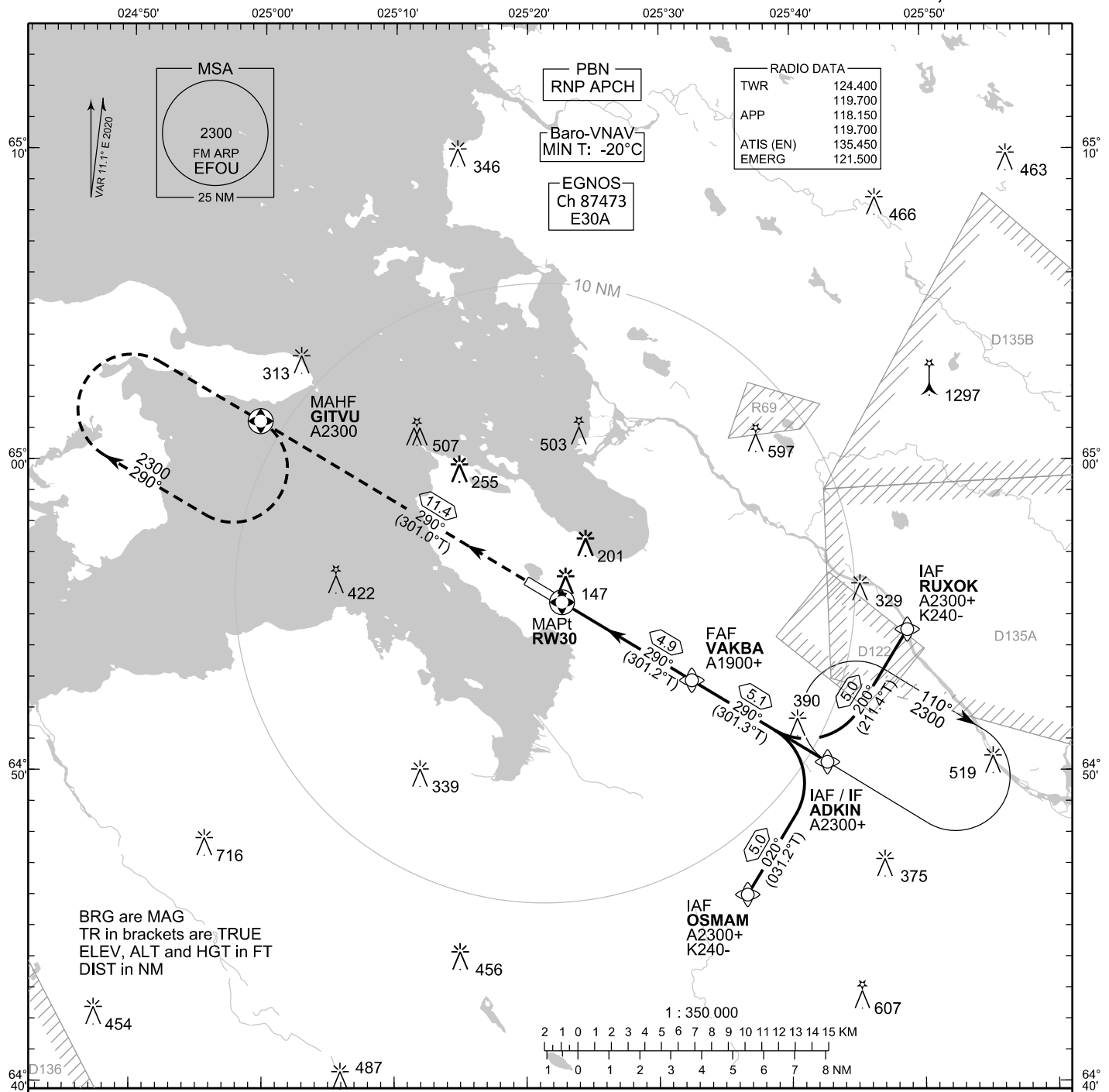


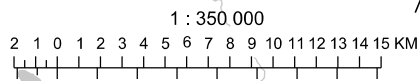
**INSTRUMENT
APPROACH CHART - ICAO**

ELEV 48 FT
HEIGHTS RELATED TO
THR RWY 30 ELEV 34 FT

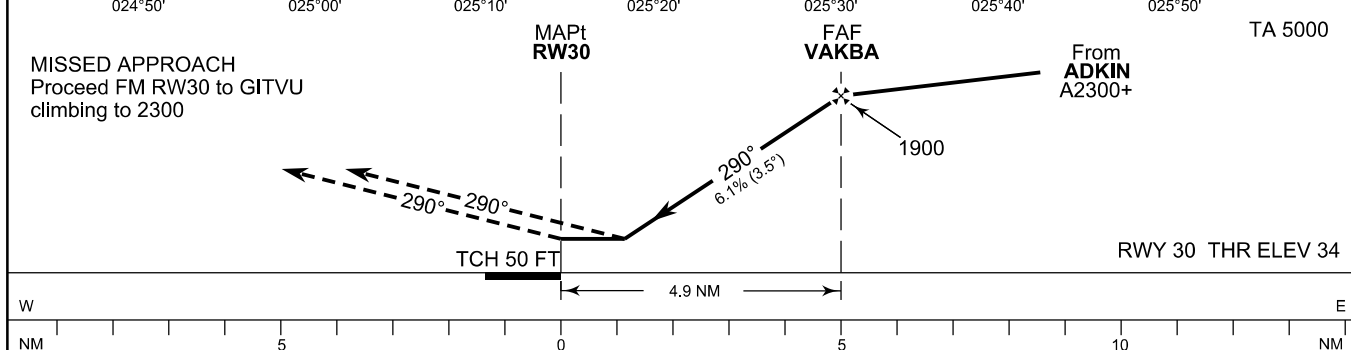
**RNP RWY 30
OULU AERODROME
OULU, FINLAND**



BRG are MAG
TR in brackets are TRUE
ELEV, ALT and HGT in FT
DIST in NM



CHG: Data Block REF



OCA (H)	A	B	C	D
LPV	284 (251)	300 (267)	311(278)	322 (289)
LNAV/VNAV	305 (272)	320 (287)	332 (299)	342 (309)
LNAV	400 (360)			
Circling	500 (450)	550 (500)	650 (610)	900 (850)

DIST FM THR	1.0 NM	2.0 NM	3.0 NM	4.0 NM		
Altitude (Height)	460 (420)	830 (790)	1200 (1160)	1570 (1540)		
FAF - MAPt 4.9 NM	kt	90	100	120	140	160
Rate of descent	min:sec	3:16	2:56	2:27	2:06	1:50
	ft/min	560	620	740	870	990

Timing not authorized for defining the MAPt

EFOU RNP RWY 30										
PROC ID NAV SPEC	SEQ NR	P/T	WPT			MAG	GEO TR	DIST NM	Constraints	
			ID	Type	Flyover				LVL	Speed
H30 OSMAM RNP APCH	005	IF	OSMAM	IAF	-				A2300+	K240-
	010	TF	ADKIN	IF	-	020°	031.2°T	5.0	A2300+	
	020	TF	VAKBA	FAF	-	290°	301.3°T	5.1	A1900+	
	030	TF	RW30	MAPt	Y	290°	301.2°T	4.9		
	040	TF	GITVU	MAHF	Y	290°	301.0°T	11.4	A2300	

EFOU RNP RWY 30										
PROC ID NAV SPEC	SEQ NR	P/T	WPT			MAG	GEO TR	DIST NM	Constraints	
			ID	Type	Flyover				LVL	Speed
H30 ADKIN RNP APCH	010	IF	ADKIN	IAF/IF	-				A2300+	
	020	TF	VAKBA	FAF	-	290°	301.3°T	5.1	A1900+	
	030	TF	RW30	MAPt	Y	290°	301.2°T	4.9		
	040	TF	GITVU	MAHF	Y	290°	301.0°T	11.4	A2300	

EFOU RNP RWY 30										
PROC ID NAV SPEC	SEQ NR	P/T	WPT			MAG	GEO TR	DIST NM	Constraints	
			ID	Type	Flyover				LVL	Speed
H30 RUXOK RNP APCH	005	IF	RUXOK	IAF	-				A2300+	K240-
	010	TF	ADKIN	IF	-	200°	211.4°T	5.0	A2300+	
	020	TF	VAKBA	FAF	-	290°	301.3°T	5.1	A1900+	
	030	TF	RW30	MAPt	Y	290°	301.2°T	4.9		
	040	TF	GITVU	MAHF	Y	290°	301.0°T	11.4	A2300	

RNAV Holdings							
ID	INBD TR	INBD MAG	Turn Direction	Speed	MNM HLDG LVL	TIME	DIST NM
ADKIN	301.0°T	290°	Right	K230-	A2300	1 MIN	-
GITVU	121.0°T	110°	Right	K230-	A2300	1 MIN	-

WPT COORD
SEE PAGE EFOU AD 2.15 - 1

FINAL APPROACH PARAMETERS			
LNAV Gradient	Baro-VNAV		TCH
	VPA	MNM T	
6.12 % (3.50°)	3.50°	-20°C	50 FT

SBAS DATA	
Approach ID	E30A
Service Provider	EGNOS
CRC remainder	4F 93 40 61
Channel number	87473
Data Block	SEE EFOU AD 2.15 - 3