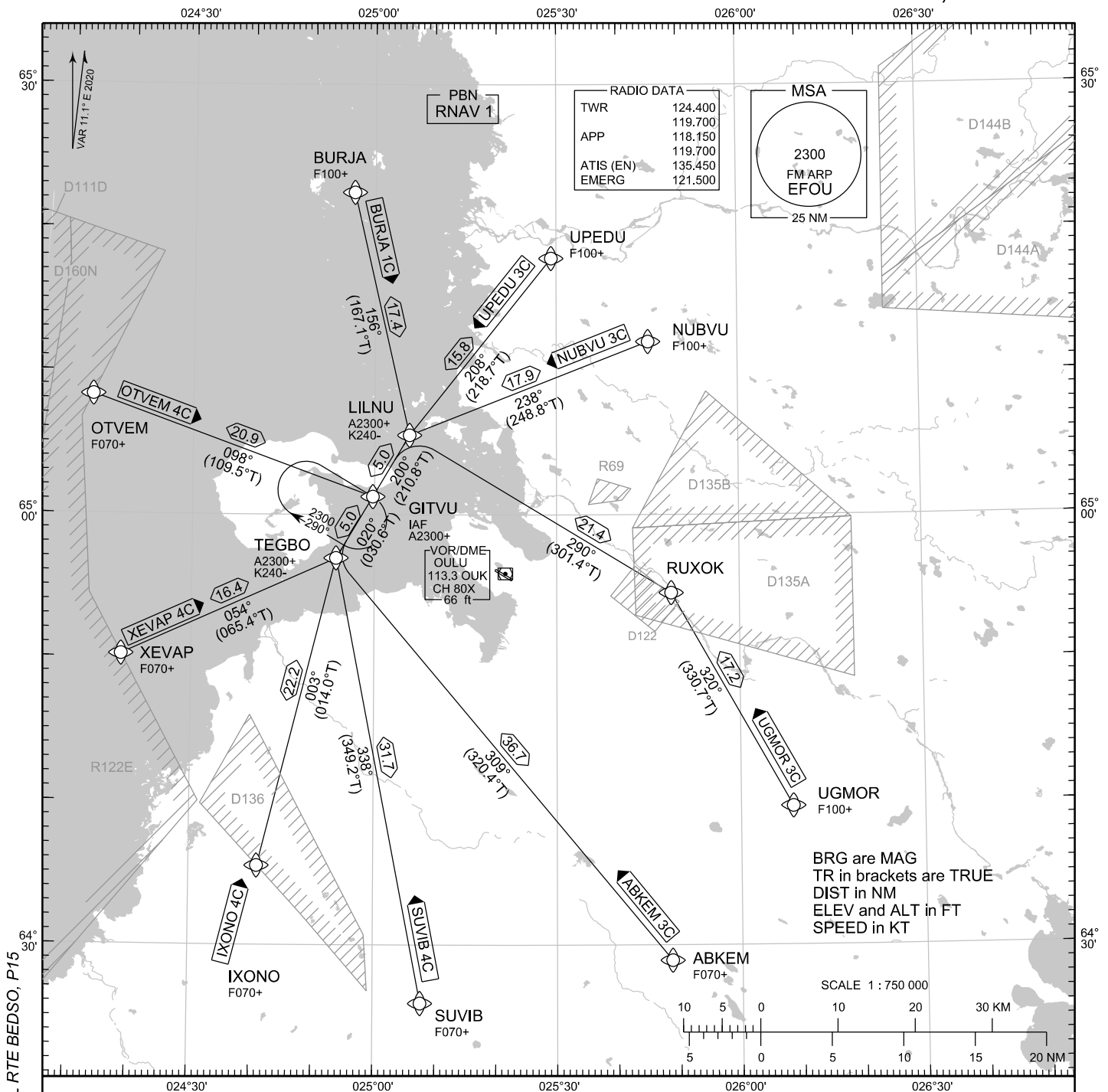


STANDARD ARRIVAL CHART
INSTRUMENT (STAR) - ICAO

TRANSITION ALT
5000

RNAV (GNSS) STAR RWY 12
OULU AERODROME
OULU, FINLAND



CHG: ADDN RTE BURJA. DEL RTE BEDSO, P15

RNAV STAR RWY 12

ABKEM 3C BURJA 1C IXONO 4C NUBVU 3C OTVEM 4C SUVIB 4C UGMOR 3C UPEDU 3C XEVAP 4C

- DME/DME OPS: NOT SUPPORTED
- ROUTES: RNAV PROC CODING ON THE VERSO OF THE CHART
ATC WILL GIVE DESCENT CLEARANCES
- WPT CONSTRAINTS: ALT / FL / SPEED CONSTRAINTS MUST ALWAYS BE FOLLOWED AS
PUBLISHED UNLESS EXPLICITLY CANCELLED BY ATC
- CD OPS: BY ATC CLR IF TFC PERMITS. PLAN CD PATH ACCORDING TO STAR
- NOISE ABATEMENT: AVOID OVERFLYING THE CITY OF OULU BELOW 2000
- RCF: SELECT TRANSPONDER CODE 7600
- RNAV STAR HAS BEEN GIVEN AND ACKNOWLEDGED: FOLLOW THE
STAR TO THE RESPECTIVE RWY AND EXECUTE IAP AND LAND
- DURING RADAR VECTORING BEFORE IAF: IN ACCORDANCE WITH
THE RULES OF THE AIR
- AREA MNM ALT: SEE AMA INDEX, AIP ENR 6.1-3

EFOU RNAV STAR RWY 12										
RTE NAV SPEC	SEQ NR	P/T	WPT		MAG	GEO TR	DIST NM	Constraints		
			ID	Flyover				LVL	LVL	Speed
ABKEM 3C RNAV 1	010	IF	ABKEM	-	-	-	-	F070+		
	020	TF	TEGBO	-	309°	320.4°T	36.7	A2300+		K240-
	030	TF	GITVU	-	020°	030.6°T	5.0	A2300+		
BURJA 1C RNAV 1	010	IF	BURJA	-	-	-	-	F100+		
	020	TF	LILNU	-	156°	167.1°T	17.4	A2300+		K240-
	030	TF	GITVU	-	200°	210.8°T	5.0	A2300+		
IXONO 4C RNAV 1	010	IF	IXONO	-	-	-	-	F070+		
	020	TF	TEGBO	-	003°	014.0°T	22.2	A2300+		K240-
	030	TF	GITVU	-	020°	030.6°T	5.0	A2300+		
NUBVU 3C RNAV 1	010	IF	NUBVU	-	-	-	-	F100+		
	020	TF	LILNU	-	238°	248.8°T	17.9	A2300+		K240-
	030	TF	GITVU	-	200°	210.8°T	5.0	A2300+		
OTVEM 4C RNAV 1	010	IF	OTVEM	-	-	-	-	F070+		
	020	TF	GITVU	-	098°	109.5°T	20.9	A2300+		
SUVIB 4C RNAV 1	010	IF	SUVIB	-	-	-	-	F070+		
	020	TF	TEGBO	-	338°	349.2°T	31.7	A2300+		K240-
	030	TF	GITVU	-	020°	030.6°T	5.0	A2300+		
UGMOR 3C RNAV 1	010	IF	UGMOR	-	-	-	-	F100+		
	020	TF	RUXOK	-	320°	330.7°T	17.2			
	030	TF	LILNU	-	290°	301.4°T	21.4	A2300+		K240-
	040	TF	GITVU	-	200°	210.8°T	5.0	A2300+		
UPEDU 3C RNAV 1	010	IF	UPEDU	-	-	-	-	F100+		
	020	TF	LILNU	-	208°	218.7°T	15.8	A2300+		K240-
	030	TF	GITVU	-	200°	210.8°T	5.0	A2300+		
XEVAP 4C RNAV 1	010	IF	XEVAP	-	-	-	-	F070+		
	020	TF	TEGBO	-	054°	065.4°T	16.4	A2300+		K240-
	030	TF	GITVU	-	020°	030.6°T	5.0	A2300+		

RNAV Holdings							
ID	INBD TR	INBD MAG	Turn Direction	Speed	MNM HLDG LVL	TIME	DIST NM
GITVU	121.0°T	110°	Right	K230-	A2300	1 MIN	-

WPT COORD
SEE PAGE EFOU AD 2.15 - 1