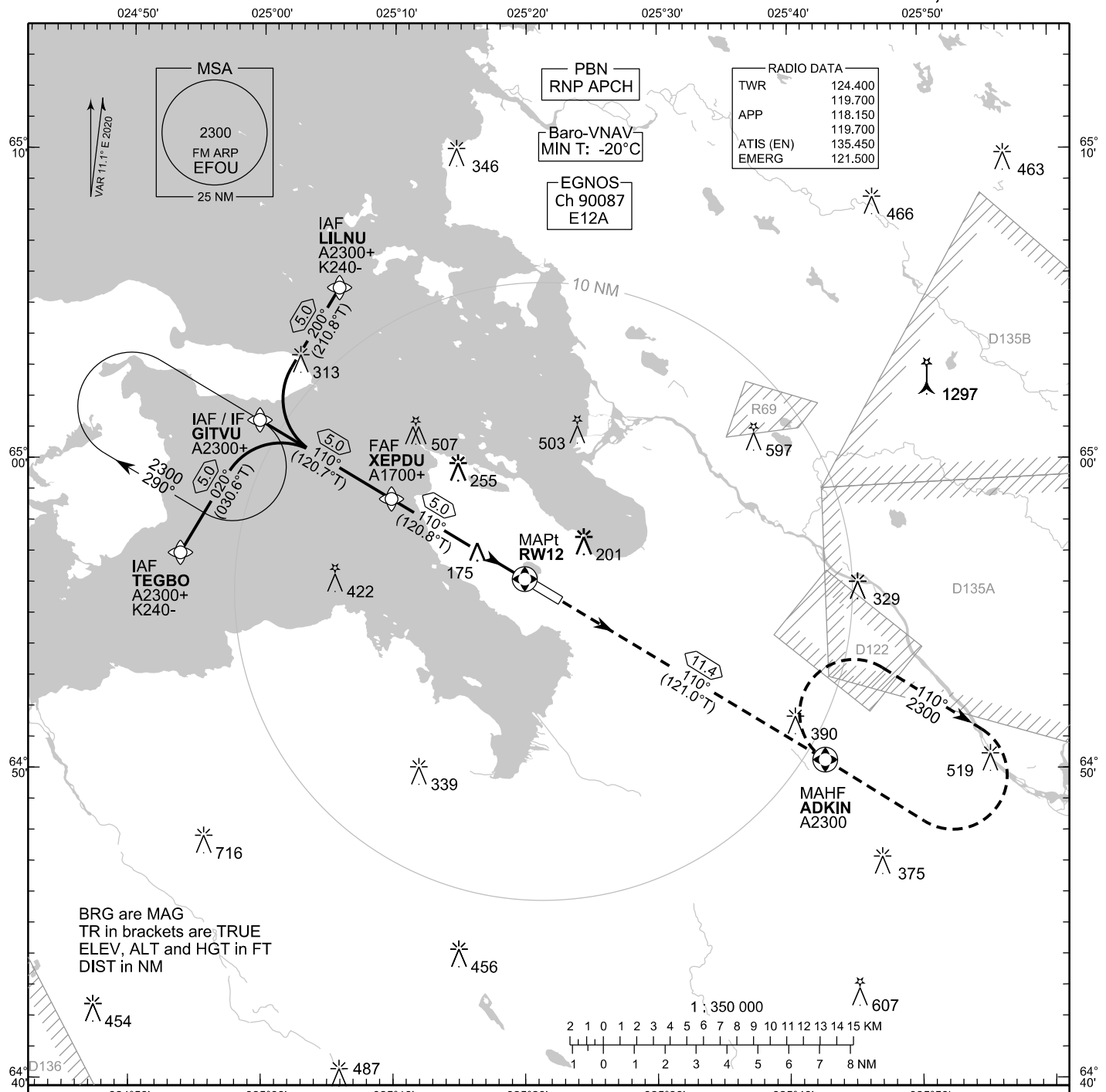


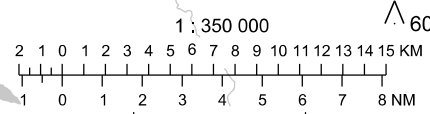
**INSTRUMENT
APPROACH CHART - ICAO**

ELEV 48 FT
HEIGHTS RELATED TO
THR RWY 12 ELEV 48 FT

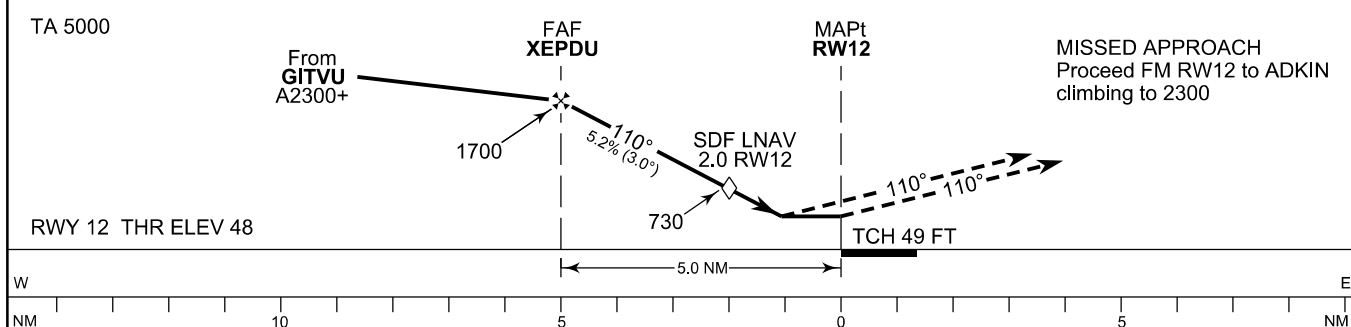
**RNP RWY 12
OULU AERODROME
OULU, FINLAND**



BRG are MAG
TR in brackets are TRUE
ELEV, ALT and HGT in FT
DIST in NM



CHG: Data Block REF



OCA (H)	A	B	C	D
LPV	271 (224)	283 (236)	291 (244)	302 (255)
LNAV/VNAV	295 (248)	307 (260)	315 (268)	325 (278)
LNAV	430 (380)			
Circling	500 (450)	550 (500)	650 (610)	900 (850)

DIST FM THR	5.0 NM	4.0 NM	3.0 NM	2.0 NM		
Altitude (Height)	1690 (1640)	1370 (1320)	1050 (1000)	730 (690)		
FAF - MAPt 5.0 NM	kt	90	100	120	140	160
	min:sec	3:21	3:01	2:31	2:09	1:53
Rate of descent	ft/min	480	530	640	740	850

Timing not authorized for defining the MAPt

EFOU RNP RWY 12										
PROC ID NAV SPEC	SEQ NR	P/T	WPT			MAG	GEO TR	DIST NM	Constraints	
			ID	Type	Flyover				LVL	Speed
H12 LILNU RNP APCH	005	IF	LILNU	IAF	-				A2300+	K240-
	010	TF	GITVU	IF	-	200°	210.8°T	5.0	A2300+	
	020	TF	XEPDU	FAF	-	110°	120.7°T	5.0	A1700+	
	030	TF	RW12	MAPt	Y	110°	120.8°T	5.0		
	040	TF	ADKIN	MAHF	Y	110°	121.0°T	11.4	A2300	

EFOU RNP RWY 12										
PROC ID NAV SPEC	SEQ NR	P/T	WPT			MAG	GEO TR	DIST NM	Constraints	
			ID	Type	Flyover				LVL	Speed
H12 GITVU RNP APCH	010	IF	GITVU	IAF/IF	-				A2300+	
	020	TF	XEPDU	FAF	-	110°	120.7°T	5.0	A1700+	
	030	TF	RW12	MAPt	Y	110°	120.8°T	5.0		
	040	TF	ADKIN	MAHF	Y	110°	121.0°T	11.4	A2300	

EFOU RNP RWY 12										
PROC ID NAV SPEC	SEQ NR	P/T	WPT			MAG	GEO TR	DIST NM	Constraints	
			ID	Type	Flyover				LVL	Speed
H12 TEGBO RNP APCH	005	IF	TEGBO	IAF	-				A2300+	K240-
	010	TF	GITVU	IF	-	020°	030.6°T	5.0	A2300+	
	020	TF	XEPDU	FAF	-	110°	120.7°T	5.0	A1700+	
	030	TF	RW12	MAPt	Y	110°	120.8°T	5.0		
	040	TF	ADKIN	MAHF	Y	110°	121.0°T	11.4	A2300	

RNAV Holdings							
ID	INBD TR	INBD MAG	Turn Direction	Speed	MNM HLDG LVL	TIME	DIST NM
GITVU	121.0°T	110°	Right	K230-	A2300	1 MIN	-
ADKIN	301.0°T	290°	Right	K230-	A2300	1 MIN	-

WPT COORD
SEE PAGE EFOU AD 2.15 - 1

FINAL APPROACH PARAMETERS			
LNAV Gradient	Baro-VNAV		TCH
	VPA	MNM T	
5.24 % (3.00°)	3.00°	-20°C	49 FT

SBAS DATA	
Approach ID	E12A
Service Provider	EGNOS
CRC remainder	9E DF 7D 3E
Channel number	90087
Data Block	SEE EFOU AD 2.15 - 3