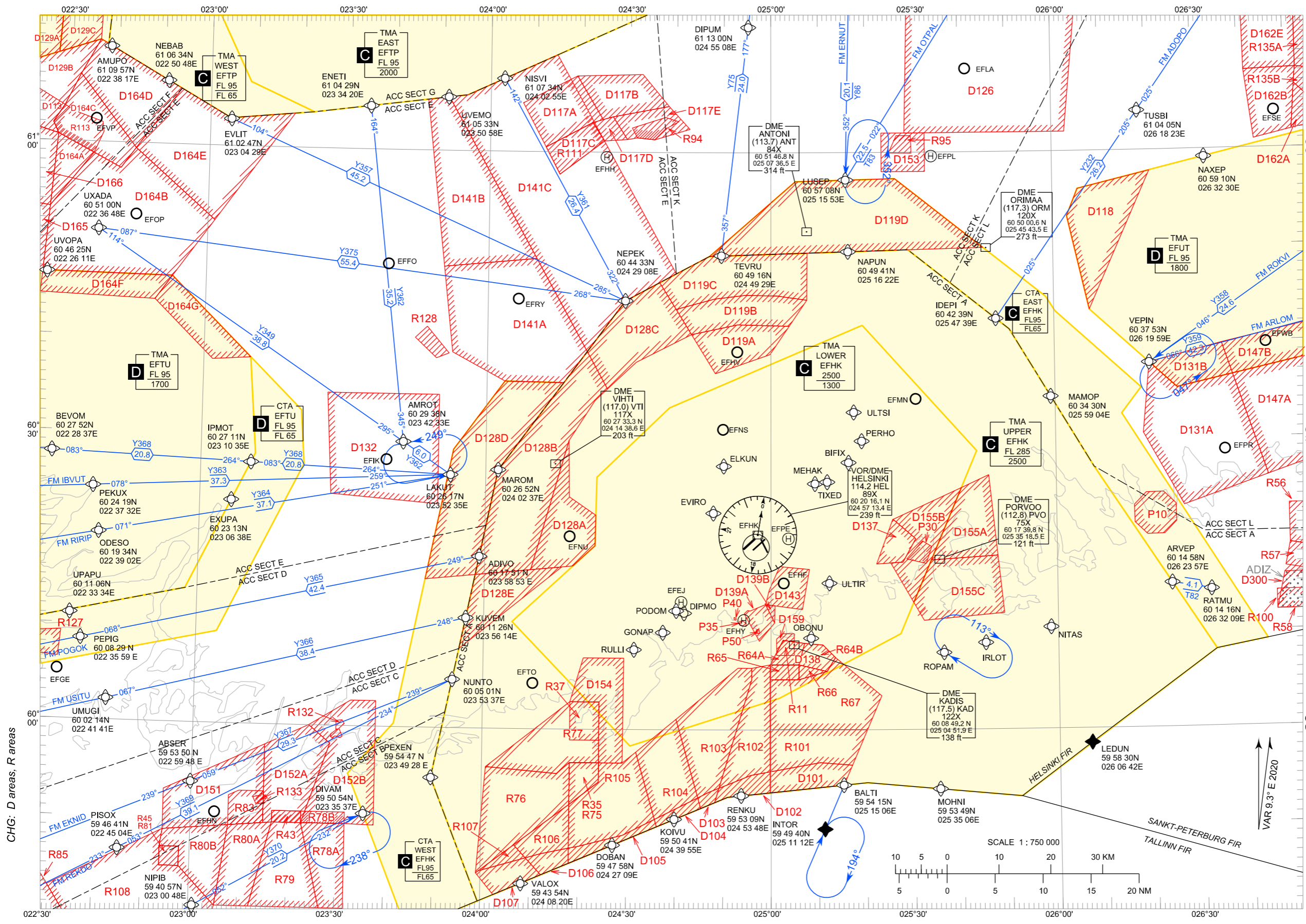


# AREA CHART - ICAO

# EFHK TMA



**LEGEND**

- TMA, CTA
- Flight Information Region (FIR)
- ACC Sector
- ATS route
- Permanent RNAV route
- - - Conditional RNAV route (CDR1)
- P606  
Route designator  
Distance / Direction of traffic flow
- 090°  
MAG Track
- ◆ Compulsory Fly-by Reporting Point
- ◊ On request Fly-by Reporting Point
- P10 Prohibited area (PPR)  
R30 Restricted area (PPR)  
D60 Danger area
- ↻ HLDG pattern and outbound track  
090°

Airspace type TMA Name  
Airspace class C UPPER  
EFHK FL 285  
2500 Lower limit

**ATC SER**

ACC SECT A	127.425
ACC SECT B	125.225
ACC SECT C	132.675
ACC SECT D	121.300
ACC SECT E	134.575
ACC SECT F	132.725
ACC SECT G	127.100
ACC SECT K	123.775
ACC SECT L	136.650

BRG are MAG  
DIST in NM  
ALT and ELEV in FT

Notes:  
Area MNM ALT: See AMA Index, AIP ENR 6.1 - 3  
In order to avoid excessive chart clutter,  
IFR REP COORD inside EFHK TMA UPPER are  
not shown.  
See AIP ENR 4.4