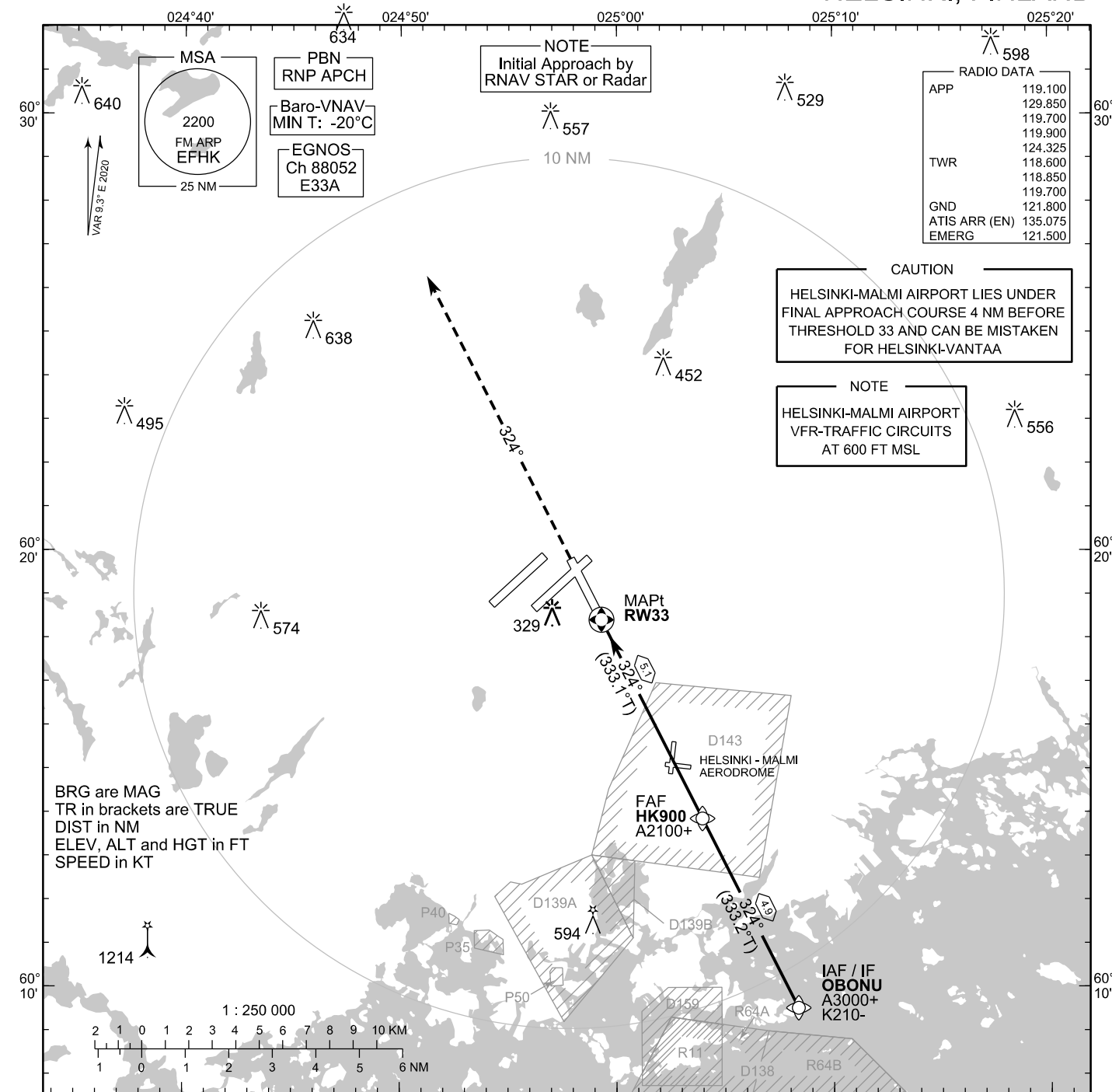


INSTRUMENT
APPROACH CHART - ICAO

ELEV 180 FT
HEIGHTS RELATED TO
THR RWY 33 ELEV 147 FT

RNP RWY 33
HELSINKI-VANTAA AERODROME
HELSINKI, FINLAND



BRG are MAG
TR in brackets are TRUE
DIST in NM
ELEV, ALT and HGT in FT
SPEED in KT

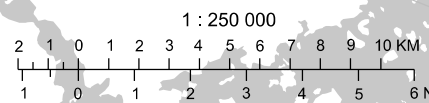
NOTE
Initial Approach by
RNAV STAR or Radar

RADIO DATA

APP	119.100
	129.850
	119.700
	119.900
	124.325
TWR	118.600
	118.850
	119.700
GND	121.800
ATIS ARR (EN)	135.075
EMERG	121.500

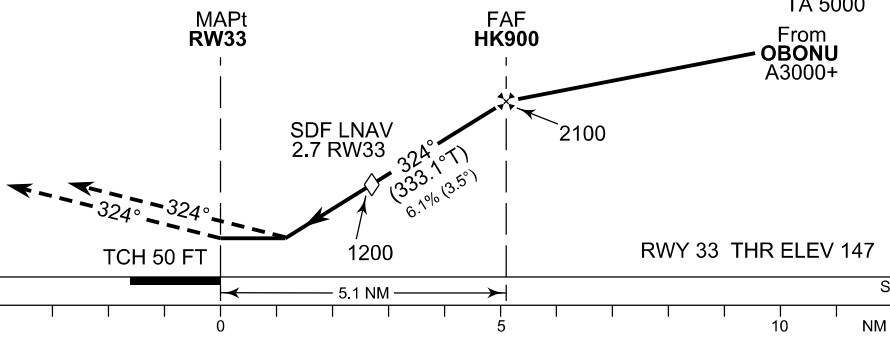
CAUTION
HELSINKI-MALMI AIRPORT LIES UNDER
FINAL APPROACH COURSE 4 NM BEFORE
THRESHOLD 33 AND CAN BE MISTAKEN
FOR HELSINKI-VANTAA

NOTE
HELSINKI-MALMI AIRPORT
VFR-TRAFFIC CIRCUITS
AT 600 FT MSL



CHG: Data Block REF

MISSED APPROACH
Proceed FM RW33 on track 324°
climbing to 2000.
Expect radar vectoring.



OCA (H)	A	B	C	D
LPV	450 (303)	466 (319)	477 (330)	487 (340)
LNAV/VNAV	466 (319)	481 (334)	493 (346)	503 (356)
LNAV	580 (430)			

DIST FM THR	2.0 NM	3.0 NM	4.0 NM	5.0 NM		
Altitude (Height)	940 (790)	1310 (1160)	1680 (1540)	2060 (1910)		
	kt	90	100	120	140	160
FAF - MAPt 5.1 NM	min:sec	3:25	3:04	2:34	2:12	1:55
Rate of descent	ft/min	560	620	740	870	990

Timing not authorized for defining the MAPt

EFHK RNP RWY 33										
PROC ID NAV SPEC	SEQ NR	P/T	WPT			MAG	GEO TR	DIST NM	Constraints	
			ID	Type	Flyover				LVL	Speed
H33 OBONU RNP APCH	010	IF	OBONU	IAF/IF	-				A3000+	K210-
	020	TF	HK900	FAF	-	324°	333.2°T	4.9	A2100+	
	030	TF	RW33	MAPt	Y	324°	333.1°T	5.1		
	040	CA	-	-	-	324°	333.3°T	-	A2000	

WPT COORD
SEE PAGE EFHK AD 2.15 - 1

FINAL APPROACH PARAMETERS			
LNAV Gradient	Baro-VNAV		TCH
	VPA	MNM T	
6.12 % (3.50°)	3.50°	-20°C	50 FT

SBAS DATA	
Approach ID	E33A
Service Provider	EGNOS
CRC remainder	3A 8A 2A DC
Channel number	88052
Data Block	SEE EFHK AD 2.15 - 5