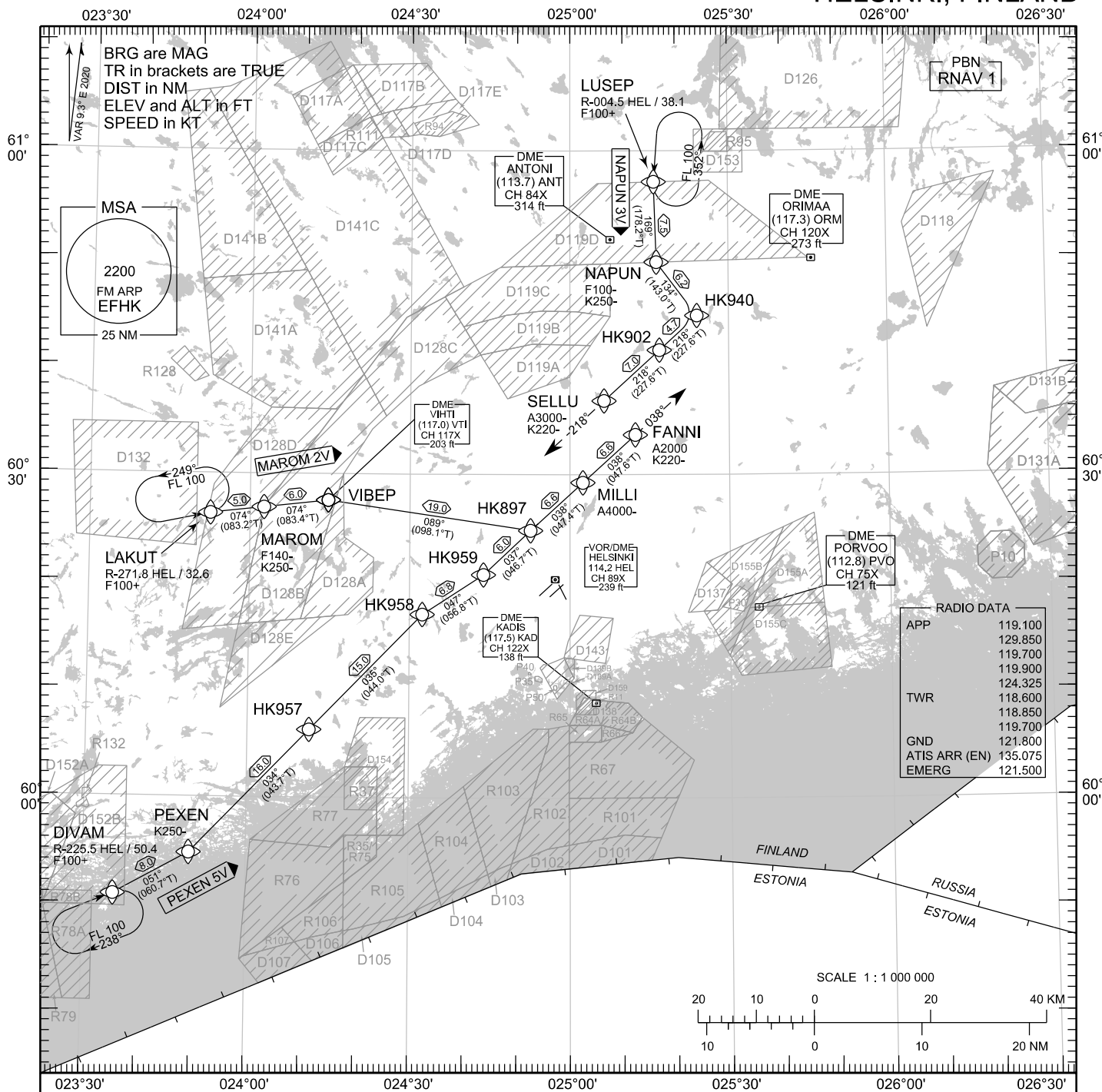


TRANSITION ALT
5000



RNAV STAR RWY 22R 2/2
MAROM 2V NAPUN 3V PEXEN 5V

DME/DME OPS: MORE THAN 2 DME INPUTS CANNOT BE GUARANTEED AT ALL TIMES.

AREA MNM ALT: SEE AMA INDEX, AIP ENR 6.1 - 3

ROUTES: RNAV PROC CODING ON THE VERSO OF THE CHART.

UNLESS OTHERWISE INSTRUCTED, STAR MUST BE FLOWN ACCORDING TO THE DEFINED WAYPOINT SEQUENCE UNTIL THE LAST WAYPOINT AND THEN CONTINUE ON THE DEFINED COURSE. ATC CLEARANCE TO INBOUND IS ALWAYS REQUIRED.

ATC WILL GIVE DESCENT CLEARANCES.

WPT CONSTRAINTS: ALT / FL / SPEED CONSTRAINTS MUST ALWAYS BE FOLLOWED AS PUBLISHED UNLESS EXPLICITLY CANCELLED BY ATC.

CD OPS: BY ATC CLR IF TFC PERMITS. PLAN CD PATH ACCORDING TO STAR FOLLOWED BY DCT INTERCEPT TO IAF OF THE ACKNOWLEDGED IAP OR AS ADVISED BY ATC.

RCF: SELECT TRANSPONDER CODE 7600.

RNAV STAR HAS BEEN GIVEN AND ACKNOWLEDGED: FOLLOW THE STAR UNTIL THE LAST WAYPOINT AND PROCEED TO IAF. IF RADAR VECTORED, CONTINUE 2 MIN ON LAST ASSIGNED AND ACKNOWLEDGED HDG AND ALT/FL, THEN RESUME STAR UNTIL THE LAST WAYPOINT AND PROCEED TO IAF.

RNAV STAR HAS NOT BEEN GIVEN AND ACKNOWLEDGED: CONTINUE 2 MIN ON LAST ASSIGNED AND ACKNOWLEDGED HDG AND ALT/FL, THEN PROCEED TO IAF.

FROM IAF EXECUTE IAP TO THE ACKNOWLEDGED RWY AND VACATE.

AIRCRAFT HAVING TELEPHONE, CALL +358 9 6151 3324.

CHG: ADDN R128, R132

| EFHK RNAV STAR RWY 22R 2/2 | | | | | | | | | | |
|----------------------------|--------|-----|-------|---------|------|---------|---------|-------------|-----|-------|
| RTE NAV SPEC | SEQ NR | P/T | WPT | | MAG | GEO TR | DIST NM | Constraints | | |
| | | | ID | Flyover | | | | LVL | LVL | Speed |
| MAROM 2V RNAV 1 | 010 | IF | LAKUT | - | - | - | - | F100+ | | |
| | 020 | TF | MAROM | - | 074° | 083.2°T | 5.0 | F140- | | K250- |
| | 030 | TF | VIBEP | - | 074° | 083.4°T | 6.0 | | | |
| | 040 | TF | HK897 | - | 089° | 098.1°T | 19.0 | | | |
| | 050 | TF | MILLI | - | 038° | 047.4°T | 6.6 | A4000- | | |
| | 060 | TF | FANNI | - | 038° | 047.6°T | 6.6 | A2000 | | K220- |
| | 070 | FM | FANNI | - | 038° | 047.6°T | - | A2000 | | K220- |

| | | | | | | | | | | |
|--------------------|-----|----|-------|---|------|---------|-----|--------|--|-------|
| NAPUN 3V RNAV 1 | 010 | IF | LUSEP | - | - | - | - | F100+ | | |
| | 020 | TF | NAPUN | - | 169° | 178.2°T | 7.5 | F100- | | K250- |
| | 030 | TF | HK940 | - | 134° | 143.0°T | 6.2 | | | |
| | 040 | TF | HK902 | - | 218° | 227.6°T | 4.7 | | | |
| | 050 | TF | SELLU | - | 218° | 227.6°T | 7.0 | A3000- | | K220- |
| | 060 | FM | SELLU | - | 218° | 227.6°T | - | A3000- | | K220- |

| | | | | | | | | | | |
|--------------------|-----|----|-------|---|------|---------|------|--------|--|-------|
| PEXEN 5V RNAV 1 | 010 | IF | DIVAM | - | - | - | - | F100+ | | |
| | 020 | TF | PEXEN | - | 051° | 060.7°T | 8.0 | | | K250- |
| | 030 | TF | HK957 | - | 034° | 043.7°T | 16.0 | | | |
| | 040 | TF | HK958 | - | 035° | 044.0°T | 15.0 | | | |
| | 050 | TF | HK959 | - | 047° | 056.8°T | 6.8 | | | |
| | 060 | TF | HK897 | - | 037° | 046.7°T | 6.0 | | | |
| | 070 | TF | MILLI | - | 038° | 047.4°T | 6.6 | A4000- | | |
| | 080 | TF | FANNI | - | 038° | 047.6°T | 6.6 | A2000 | | K220- |
| | 090 | FM | FANNI | - | 038° | 047.6°T | - | A2000 | | K220- |

| RNAV Holdings | | | | | | | |
|---------------|---------|----------|----------------|-------|--------------|-------|---------|
| ID | INBD TR | INBD MAG | Turn Direction | Speed | MNM HLDG LVL | TIME | DIST NM |
| DIVAM | 067.4°T | 058° | Right | K230- | F100 | 1 MIN | - |
| LAKUT | 077.9°T | 069° | Left | K230- | F100 | 1 MIN | - |
| LUSEP | 181.3°T | 172° | Left | K230- | F100 | 1 MIN | - |

| WPT COORD |
|---------------------------|
| SEE PAGE EFHK AD 2.15 - 1 |