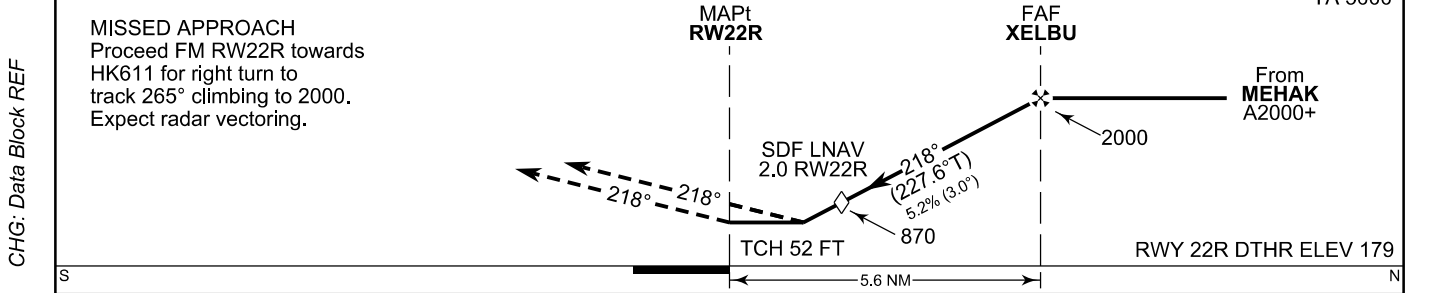
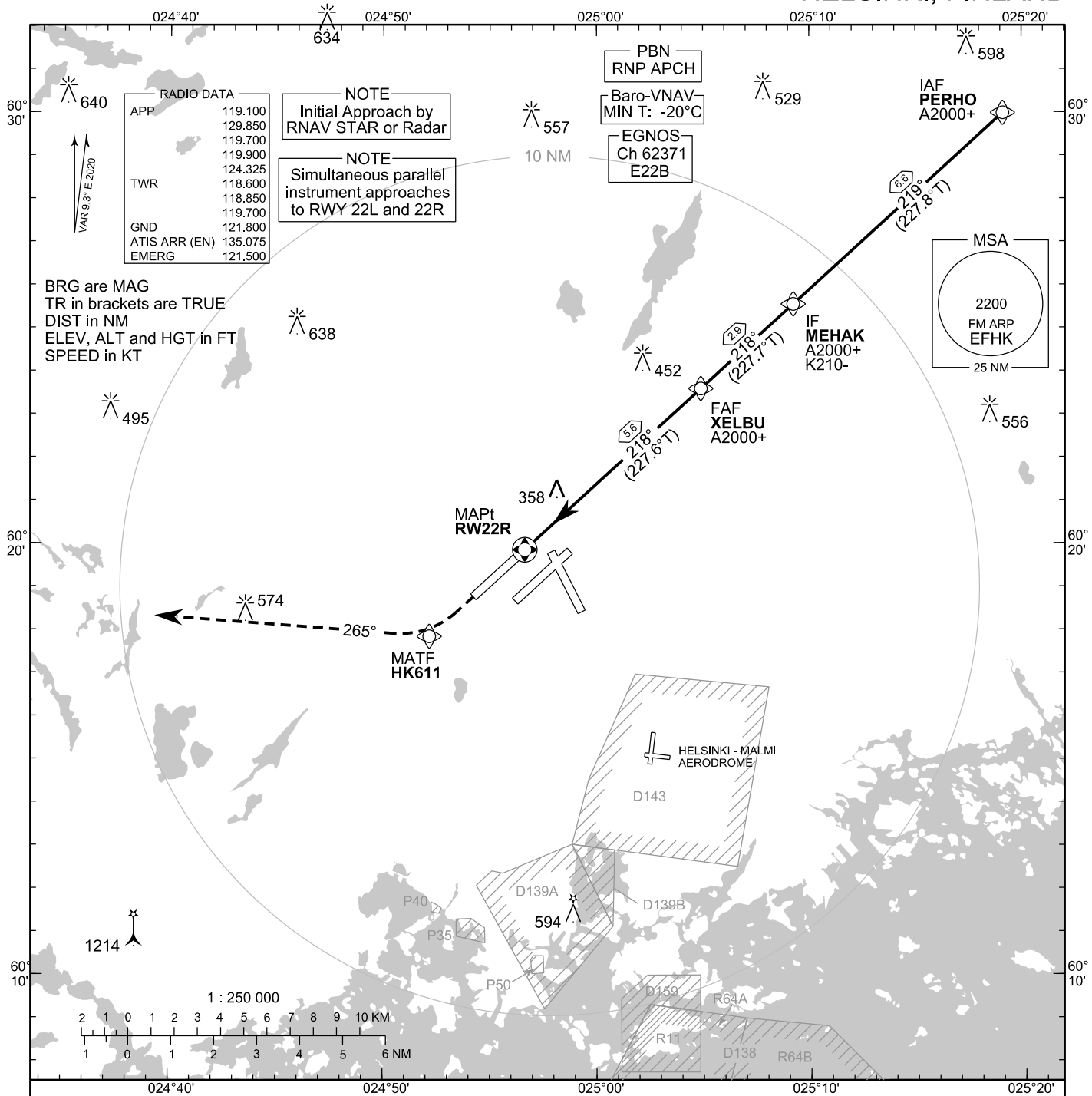


**INSTRUMENT  
APPROACH CHART - ICAO**

ELEV 180 FT  
HEIGHTS RELATED TO  
AERODROME ELEV

RNP RWY 22R  
HELSINKI-VANTAA AERODROME  
HELSINKI, FINLAND



	10	5	0	5	10	NM
OCA (H)	A	B	C	D		
LPV	412 (233)	425 (246)	433 (254)	491 (312)		
LNAV/VNAV	458 (279)	471 (292)	479 (300)	489 (310)		
LNAV	610 (430)					
DIST FM THR	2.0 NM	3.0 NM	4.0 NM	5.0 NM		
Altitude (Height)	870 (690)	1190 (1010)	1500 (1320)	1820 (1640)		
	kt	90	100	120	140	160
FAF - MAPt 5.6 NM	min:sec	3:42	3:20	2:47	2:23	2:05
Rate of descent	ft/min	480	530	640	740	850

Timing not authorized for defining the MAPt

EFHK RNP RWY 22R										
PROC ID NAV SPEC	SEQ NR	P/T	WPT			MAG	GEO TR	DIST NM	Constraints	
			ID	Type	Flyover				LVL	Speed
H22R PERHO RNP APCH	005	IF	PERHO	IAF	-				A2000+	
	010	TF	MEHAK	IF	-	219°	227.8°T	6.6	A2000+	K210-
	020	TF	XELBU	FAF	-	218°	227.7°T	2.9	A2000+	
	030	TF	RW22R	MAPt	Y	218°	227.6°T	5.6		
	040	TF	HK611	MATF	-	218°	227.5°T	3.0		
	050	CA	-	-	-	265°	274.3°T	-	A2000	

WPT COORD
SEE PAGE EFHK AD 2.15 - 1

FINAL APPROACH PARAMETERS			
LNAV Gradient	Baro-VNAV		TCH
	VPA	MNM T	
5.24 % (3.00°)	3.00°	-20°C	52 FT

SBAS DATA	
Approach ID	E22B
Service Provider	EGNOS
CRC remainder	DA C3 35 5B
Channel number	62371
Data Block	SEE EFHK AD 2.15 - 5