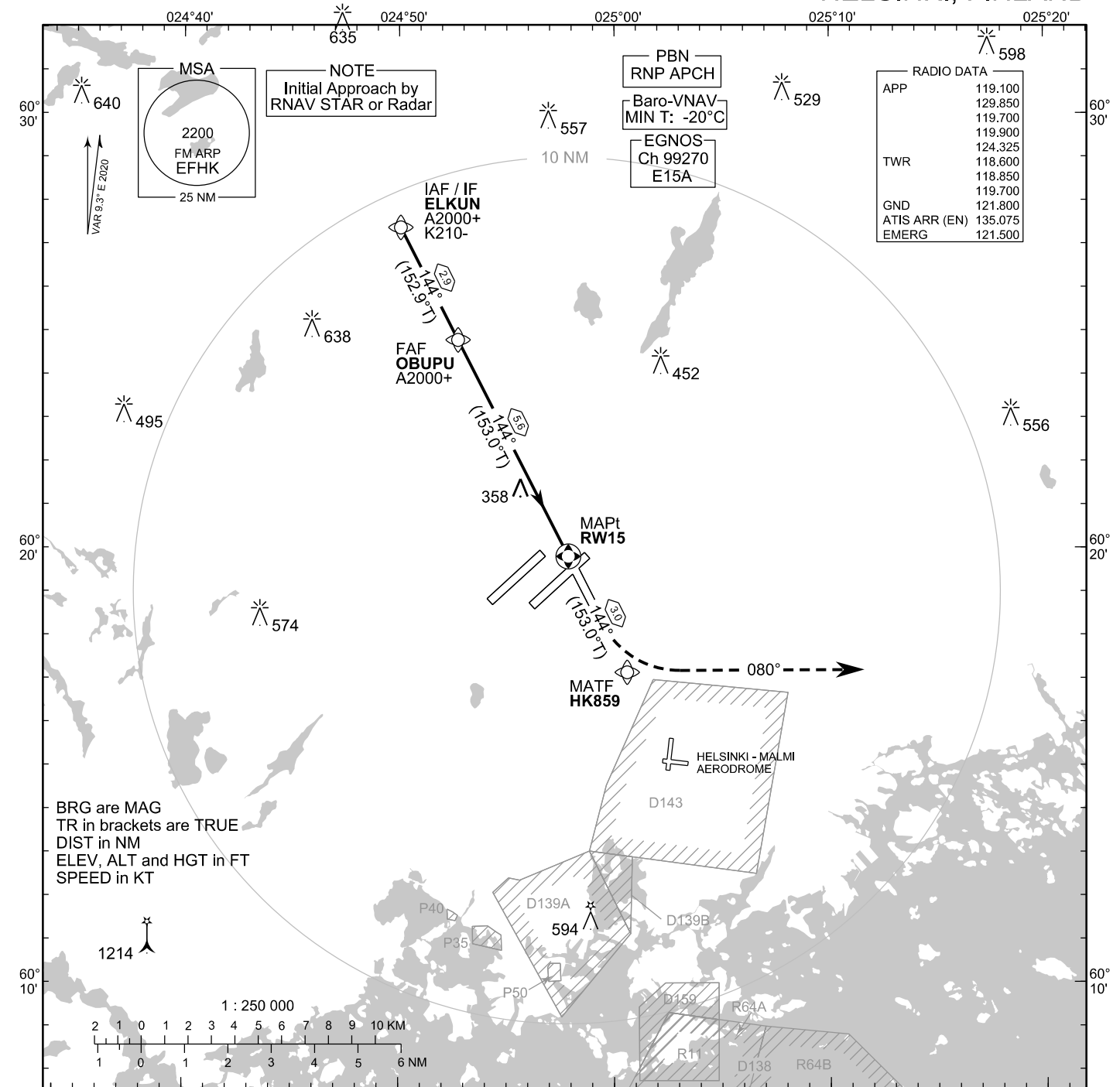


**INSTRUMENT  
APPROACH CHART - ICAO**

ELEV 180 FT  
HEIGHTS RELATED TO  
THR RWY 15 ELEV 163 FT

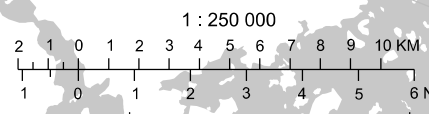
**RNP RWY 15  
HELSINKI-VANTAA AERODROME  
HELSINKI, FINLAND**



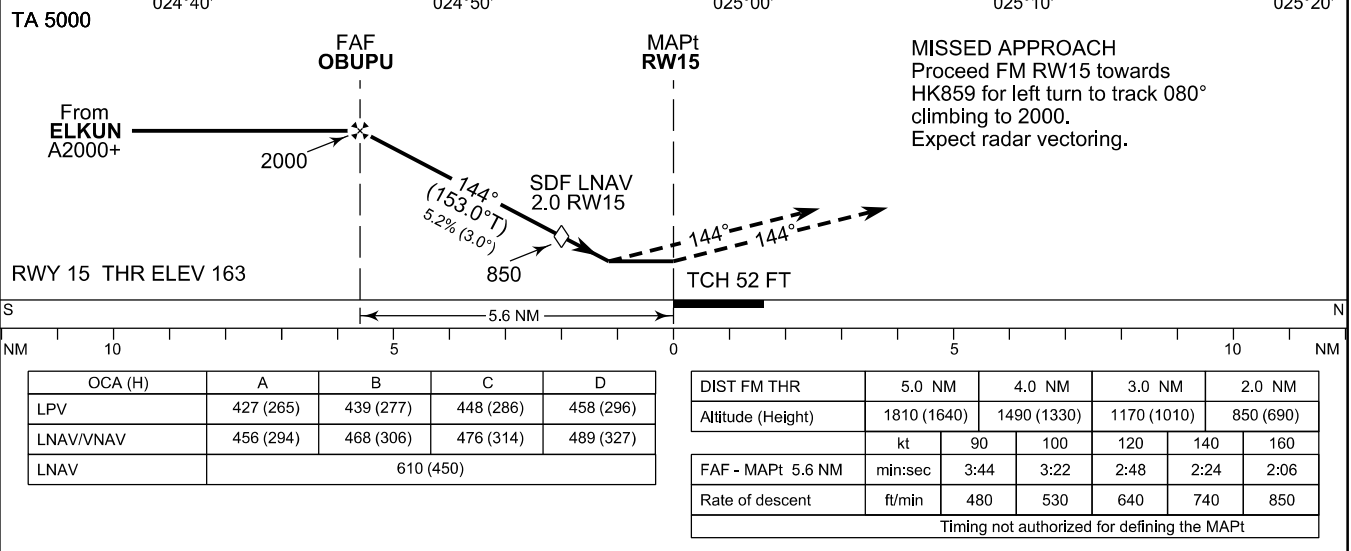
**RADIO DATA**

APP	119.100
	129.850
	119.700
	119.900
TWR	124.325
	118.600
	118.850
	119.700
GND	121.800
ATIS ARR (EN)	135.075
EMERG	121.500

BRG are MAG  
TR in brackets are TRUE  
DIST in NM  
ELEV, ALT and HGT in FT  
SPEED in KT



CHG: Data Block REF



EFHK RNP RWY 15										
PROC ID NAV SPEC	SEQ NR	P/T	WPT			MAG	GEO TR	DIST NM	Constraints	
			ID	Type	Flyover				LVL	Speed
H15 ELKUN RNP APCH	010	IF	ELKUN	IAF/IF	-				A2000+	K210-
	020	TF	OBUPU	FAF	-	144°	152.9°T	2.9	A2000+	
	030	TF	RW15	MAPt	Y	144°	153.0°T	5.6		
	040	TF	HK859	MATF	-	144°	153.0°T	3.0		
	050	CA	-	-	-	080°	089.3°T	-	A2000	

WPT COORD
SEE PAGE EFHK AD 2.15 - 1

FINAL APPROACH PARAMETERS			
LNAV Gradient	Baro-VNAV		TCH
	VPA	MNM T	
5.24 % (3.00°)	3.00°	-20°C	52 FT

SBAS DATA	
Approach ID	E15A
Service Provider	EGNOS
CRC remainder	29 48 78 6B
Channel number	99270
Data Block	SEE EFHK AD 2.15 - 5