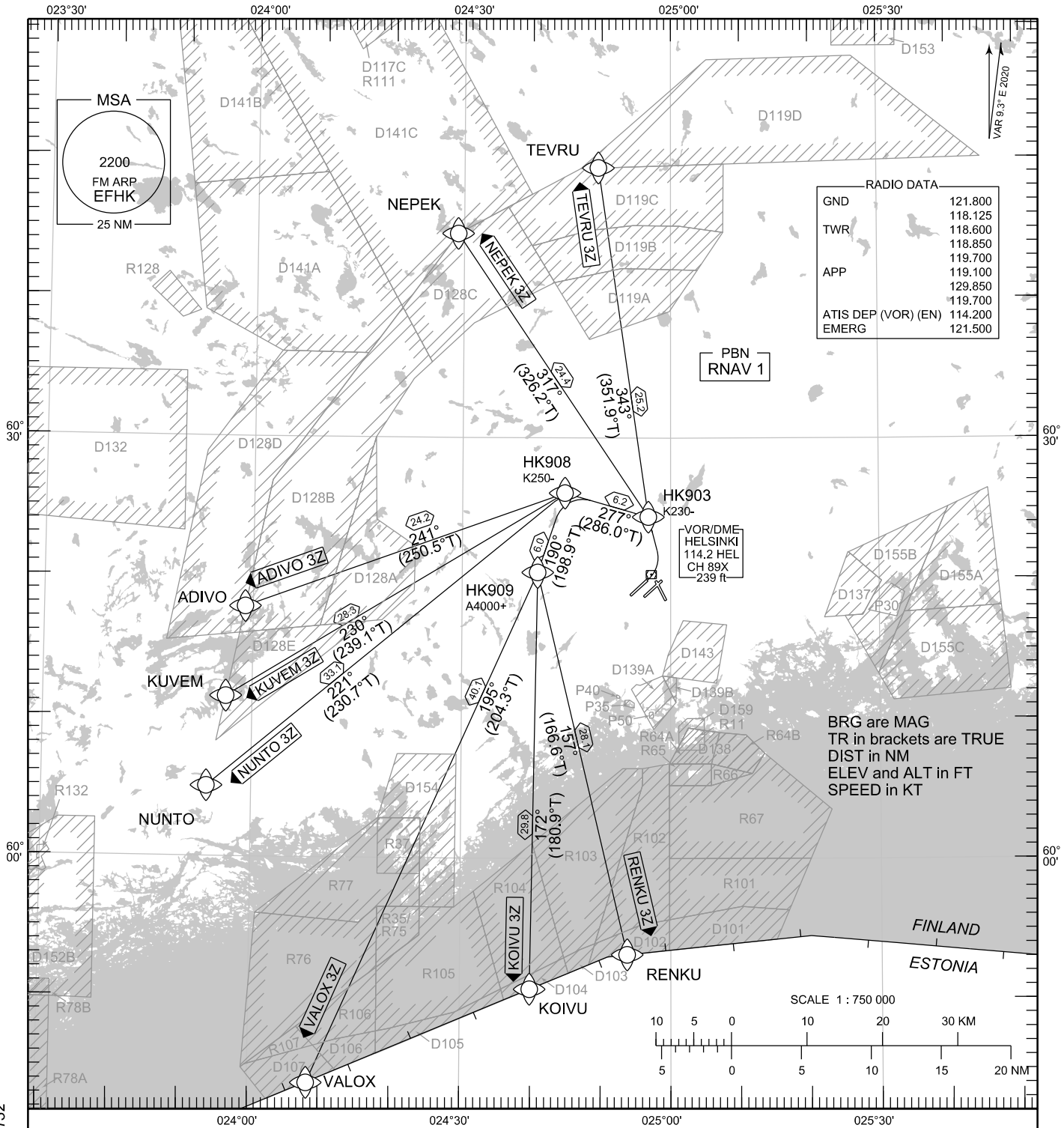


STANDARD DEPARTURE CHART
INSTRUMENT (SID) - ICAO

TRANSITION ALT
5000

RNAV (GNSS) SID RWY 04L
HELSINKI-VANTAA AERODROME
HELSINKI, FINLAND



RADIO DATA

GND	121.800
TWR	118.125
APP	118.600
APP	118.850
APP	119.700
APP	119.100
APP	129.850
APP	119.700
ATIS DEP (VOR) (EN)	114.200
EMERG	121.500

BRG are MAG
TR in brackets are TRUE
DIST in NM
ELEV and ALT in FT
SPEED in KT

RNAV SID RWY 04L

ADIVO 3Z KOIVU 3Z KUVEM 3Z NEPEK 3Z NUNTO 3Z RENKU 3Z TEVRU 3Z VALOX 3Z

DME/DME OPS:	NOT SUPPORTED	CLIMB ALTITUDE:	CLIMB TO 4000 FT OR ASSIGNED ALTITUDE IF LOWER. CLIMB TO A HIGHER LEVEL ONLY WHEN CLEARED BY ATC.
ROUTES:	RNAV PROC CODING ON THE VERSO OF THE CHART	RADIO CONTACT:	MAINTAIN TWR FREQ UNTIL 1500 FT, THEN CONTACT HELSINKI RADAR FREQ 129.850.
SQUAWK:	WHEN LINING UP SQUAWK THE ASSIGNED CODE	NOISE ABATEMENT:	AFTER TAKE-OFF CLIMB AS RAPIDLY AS PRACTICABLE TO AT LEAST 2000 FT ABOVE AD ELEV.
ADDITIONS TO SID:	INSTRUCTIONS CONTAINING DEVIATIONS FROM THE SID (TEMPORARY ALTITUDE RESTRICTIONS ETC) MAY BE INCLUDED IN THE ATC CLEARANCE PRIOR TO TAKE-OFF.	AREA MNM ALT:	SEE AMA INDEX, AIP ENR 6.1 - 3
INITIAL CLIMB:	MNM TURNING ALTITUDE ACCORDING TO RTE CODING. PDG 5.0 % (304 FT/NM) UNTIL 4000 FT BASED ON AIRSPACE RESTRICTIONS.		

CHG: ADDN R128, R132

EFHK RNAV SID RWY 04L										
RTE NAV SPEC	SEQ NR	P/T	WPT		MAG	GEO TR	DIST NM	Turn Direction	Constraints	
			ID	Flyover					LVL	Speed
ADIVO 3Z RNAV 1	010	CA	-	-	038°	047.3°T	-	L	A680+	
	020	DF	HK903	-	-	-	-			K230-
	030	TF	HK908	-	277°	286.0°T	6.2	L		K250-
	040	TF	ADIVO	-	241°	250.5°T	24.2			
KOIVU 3Z RNAV 1	010	CA	-	-	038°	047.3°T	-	L	A680+	
	020	DF	HK903	-	-	-	-			K230-
	030	TF	HK908	-	277°	286.0°T	6.2	L		K250-
	040	TF	HK909	-	190°	198.9°T	6.0		A4000+	
	050	TF	KOIVU	-	172°	180.9°T	29.8			
KUVEM 3Z RNAV 1	010	CA	-	-	038°	047.3°T	-	L	A680+	
	020	DF	HK903	-	-	-	-			K230-
	030	TF	HK908	-	277°	286.0°T	6.2	L		K250-
	040	TF	KUVEM	-	230°	239.1°T	28.3			
NEPEK 3Z RNAV 1	010	CA	-	-	038°	047.3°T	-	L	A680+	
	020	DF	HK903	-	-	-	-			K230-
	030	TF	NEPEK	-	317°	326.2°T	24.4			
NUNTO 3Z RNAV 1	010	CA	-	-	038°	047.3°T	-	L	A680+	
	020	DF	HK903	-	-	-	-			K230-
	030	TF	HK908	-	277°	286.0°T	6.2	L		K250-
	040	TF	NUNTO	-	221°	230.7°T	33.1			
RENKU 3Z RNAV 1	010	CA	-	-	038°	047.3°T	-	L	A680+	
	020	DF	HK903	-	-	-	-			K230-
	030	TF	HK908	-	277°	286.0°T	6.2	L		K250-
	040	TF	HK909	-	190°	198.9°T	6.0	L	A4000+	
	050	TF	RENKU	-	157°	166.6°T	28.1			
TEVRU 3Z RNAV 1	010	CA	-	-	038°	047.3°T	-	L	A680+	
	020	DF	HK903	-	-	-	-			K230-
	030	TF	TEVRU	-	343°	351.9°T	25.2			
VALOX 3Z RNAV 1	010	CA	-	-	038°	047.3°T	-	L	A680+	
	020	DF	HK903	-	-	-	-			K230-
	030	TF	HK908	-	277°	286.0°T	6.2	L		K250-
	040	TF	HK909	-	190°	198.9°T	6.0		A4000+	
	050	TF	VALOX	-	195°	204.3°T	40.1			

WPT COORD

SEE PAGE EFHK AD 2.15 - 1