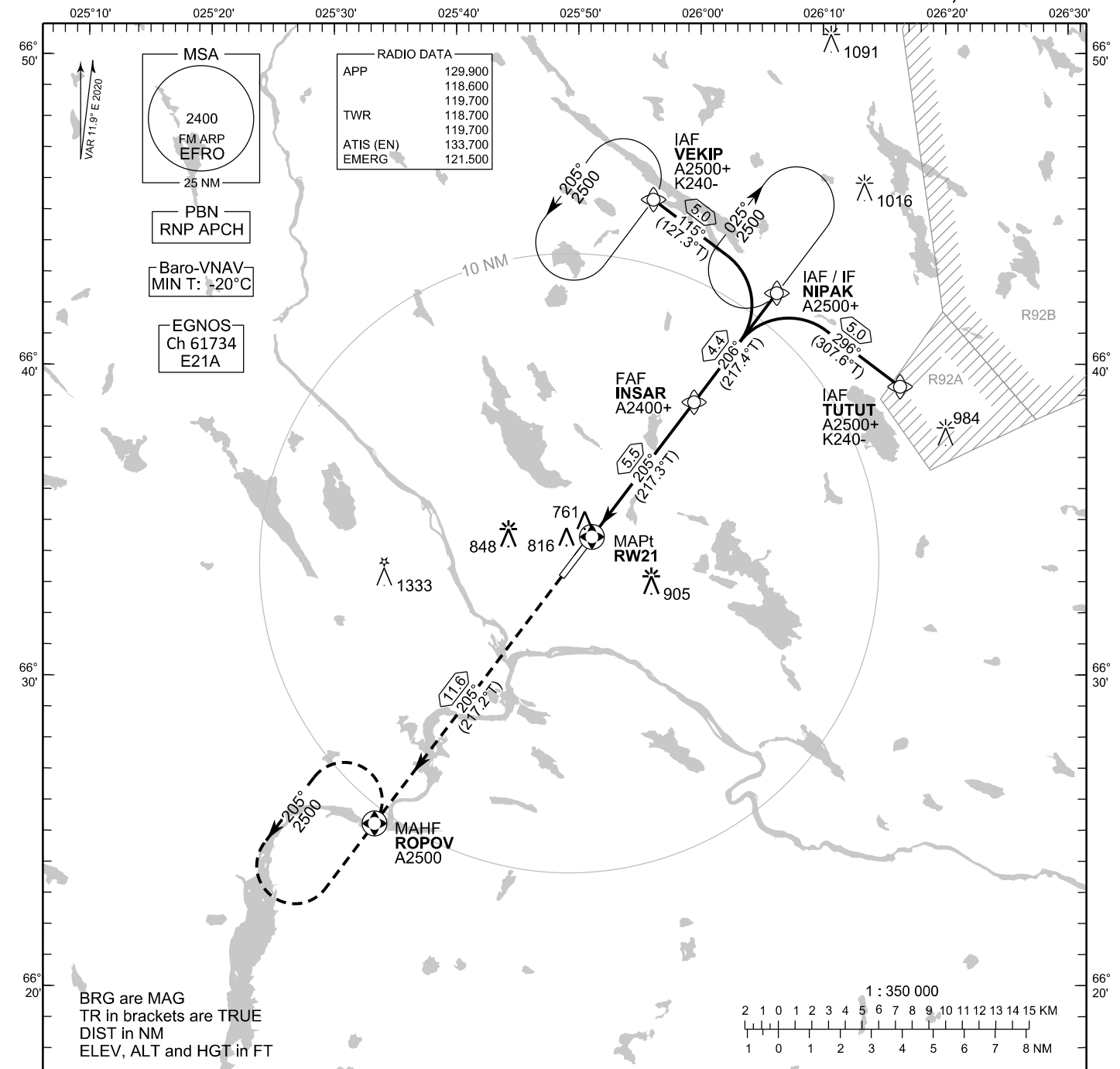


**INSTRUMENT  
APPROACH CHART - ICAO**

ELEV 643 FT  
HEIGHTS RELATED TO  
THR RWY 21 ELEV 610 FT

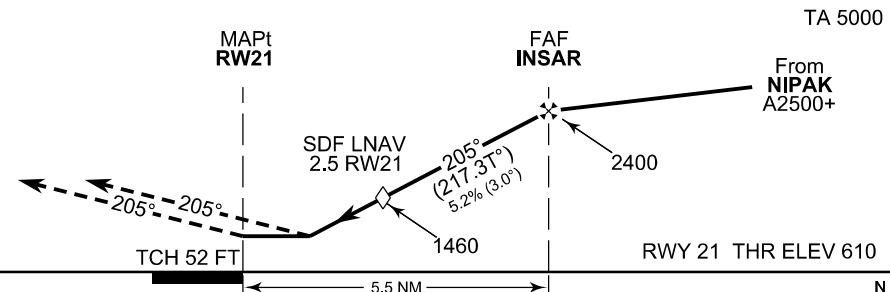
RNP RWY 21  
ROVANIEMI AERODROME  
ROVANIEMI, FINLAND



BRG are MAG  
TR in brackets are TRUE  
DIST in NM  
ELEV, ALT and HGT in FT

CHG: Data Block REF

**MISSED APPROACH**  
Proceed FM RW21 to ROPOV  
climbing to 2500



OCA (H)	A	B	C	D
LPV	892 (283)	905 (296)	913 (304)	923 (314)
LNAV/VNAV	858 (249)	871 (262)	892 (283)	930 (321)
LNAV	1010 (400)			
Circling	1120 (470)	1150 (510)	1300 (660)	1340 (690)

DIST FM THR	2.0 NM	3.0 NM	4.0 NM	5.0 NM		
Altitude (Height)	1300 (690)	1620 (1010)	1940 (1330)	2250 (1640)		
	kt	90	100	120	140	160
FAF - MAPt 5.5 NM	min:sec	3:38	3:16	2:44	2:20	2:03
Rate of descent	ft/min	480	530	640	740	850

Timing not authorized for defining the MAPt

EFRO RNP RWY 21										
PROC ID NAV SPEC	SEQ NR	P/T	WPT			MAG	GEO TR	DIST NM	Constraints	
			ID	Type	Flyover				LVL	Speed
H21 TUTUT RNP APCH	005	IF	TUTUT	IAF	-				A2500+	K240-
	010	TF	NIPAK	IF	-	296°	307.6°T	5.0	A2500+	
	020	TF	INSAR	FAF	-	206°	217.4°T	4.4	A2400+	
	030	TF	RW21	MAPt	Y	205°	217.3°T	5.5		
	040	TF	ROPOV	MAHF	Y	205°	217.2°T	11.6	A2500	

EFRO RNP RWY 21										
PROC ID NAV SPEC	SEQ NR	P/T	WPT			MAG	GEO TR	DIST NM	Constraints	
			ID	Type	Flyover				LVL	Speed
H21 NIPAK RNP APCH	010	IF	NIPAK	IAF/IF	-				A2500+	
	020	TF	INSAR	FAF	-	206°	217.4°T	4.4	A2400+	
	030	TF	RW21	MAPt	Y	205°	217.3°T	5.5		
	040	TF	ROPOV	MAHF	Y	205°	217.2°T	11.6	A2500	

EFRO RNP RWY 21										
PROC ID NAV SPEC	SEQ NR	P/T	WPT			MAG	GEO TR	DIST NM	Constraints	
			ID	Type	Flyover				LVL	Speed
H21 VEKIP RNP APCH	005	IF	VEKIP	IAF	-				A2500+	K240-
	010	TF	NIPAK	IF	-	115°	127.3°T	5.0	A2500+	
	020	TF	INSAR	FAF	-	206°	217.4°T	4.4	A2400+	
	030	TF	RW21	MAPt	Y	205°	217.3°T	5.5		
	040	TF	ROPOV	MAHF	Y	205°	217.2°T	11.6	A2500	

RNAV Holdings							
ID	INBD TR	INBD MAG	Turn Direction	Speed	MNM HLDG LVL	TIME	DIST NM
NIPAK	217.2°T	205°	Right	K230-	A2500	1 MIN	-
VEKIP	037.1°T	025°	Left	K230-	A2500	1 MIN	-
ROPOV	037.2°T	025°	Left	K230-	A2500	1 MIN	-

WPT COORD
SEE PAGE EFRO AD 2.15 - 1

FINAL APPROACH PARAMETERS			
LNAV Gradient	Baro-VNAV		TCH
	VPA	MNM T	
5.24 % (3.00°)	3.00°	-20°C	52 FT

SBAS DATA	
Approach ID	E21A
Service Provider	EGNOS
CRC remainder	F8 EE 25 29
Channel number	61734
Data Block	SEE EFRO AD 2.15 - 3