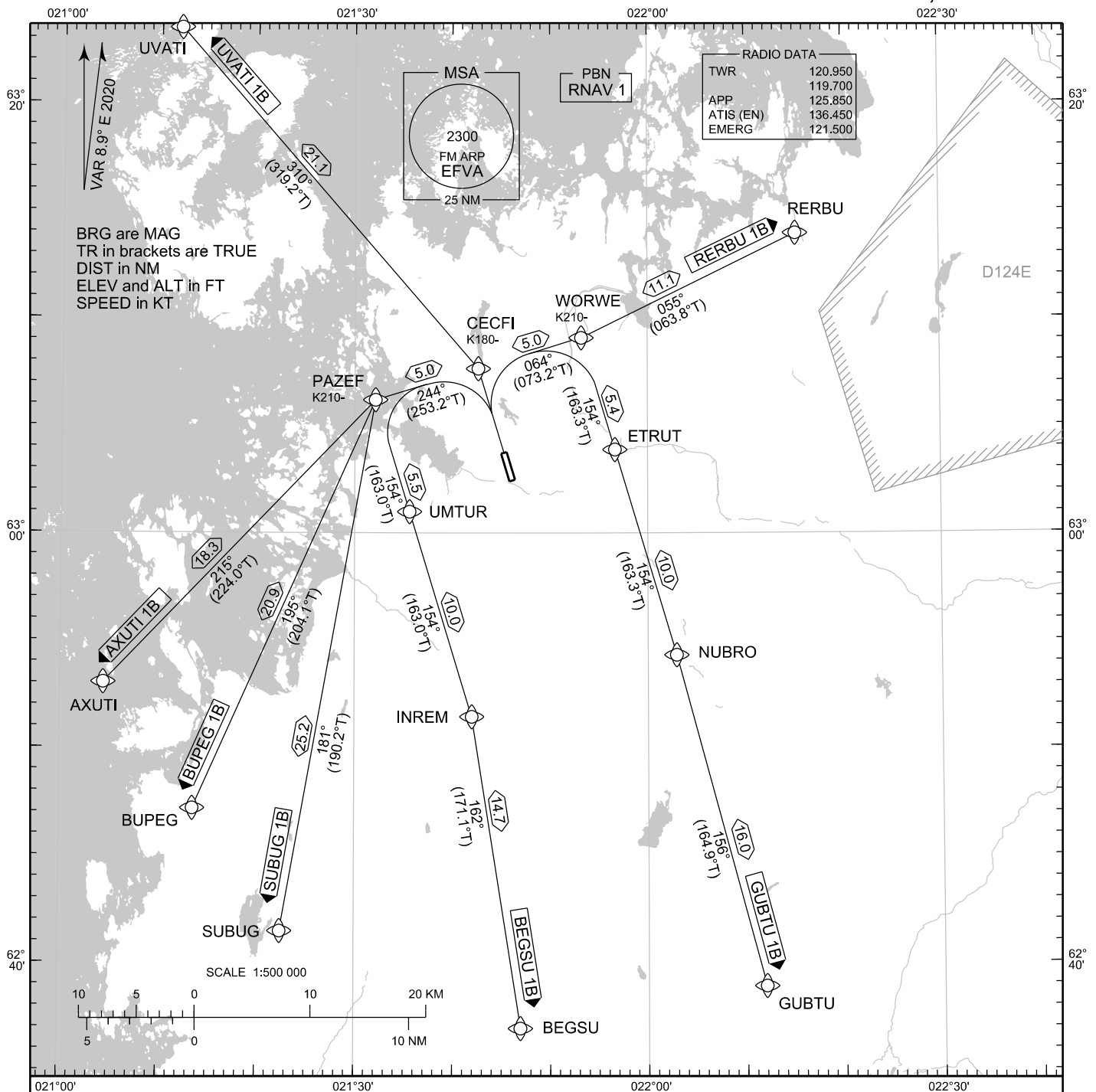


STANDARD DEPARTURE CHART
INSTRUMENT (SID) - ICAO

TRANSITION ALT
5000

RNAV (GNSS) SID RWY 34
VAASA AERODROME
VAASA, FINLAND



RNAV SID RWY 34

AXUTI 1B BEGSU 1B BUPEG 1B GUBTU 1B RERBU 1B SUBUG 1B UVATI 1B

DME/DME OPS: NOT SUPPORTED

ROUTES: RNAV PROC CODING ON THE VERSO OF THE CHART

SQUAWK: WHEN LINING UP SQUAWK THE ASSIGNED CODE

INITIAL CLIMB: MNM TURNING ALTITUDE ACCORDING TO RTE CODING.

NOISE ABATEMENT: AFTER TAKE-OFF CLIMB AS RAPIDLY AS PRACTICABLE TO AT LEAST 2000 FT ABOVE AD ELEV
PUBLISHED SID ROUTES ARE ALSO MINIMUM NOISE ROUTINGS

AREA MNM ALT: SEE AMA INDEX, AIP ENR 6.1 - 3

CHG: new PROC

EFVA RNAV SID RWY 34										
RTE NAV SPEC	SEQ NR	P/T	WPT		MAG	GEO TR	DIST NM	Turn Direction	Constraints	
			ID	Flyover					LVL	Speed
AXUTI 1B RNAV 1	010	CA	-	-	334°	342.9°T	-		A430+	
	020	DF	CECFI	-	-	-	-			K180-
	030	TF	PAZEF	-	244°	253.2°T	5.0	L		K210-
	040	TF	AXUTI	-	215°	224.0°T	18.3			
BEGSU 1B RNAV 1	010	CA	-	-	334°	342.9°T	-		A430+	
	020	DF	CECFI	-	-	-	-			K180-
	030	TF	PAZEF	-	244°	253.2°T	5.0	L		K210-
	040	TF	UMTUR	-	154°	163.0°T	5.5			
	050	TF	INREM	-	154°	163.0°T	10.0			
	060	TF	BEGSU	-	162°	171.1°T	14.7			
BUPEG 1B RNAV 1	010	CA	-	-	334°	342.9°T	-		A430+	
	020	DF	CECFI	-	-	-	-			K180-
	030	TF	PAZEF	-	244°	253.2°T	5.0	L		K210-
	040	TF	BUPEG	-	195°	204.1°T	20.9			
GUBTU 1B RNAV 1	010	CA	-	-	334°	342.9°T	-		A430+	
	020	DF	CECFI	-	-	-	-			K180-
	030	TF	WORWE	-	064°	073.2°T	5.0	R		K210-
	040	TF	ETRUT	-	154°	163.3°T	5.4			
	050	TF	NUBRO	-	154°	163.3°T	10.0			
	060	TF	GUBTU	-	156°	164.9°T	16.0			
RERBU 1B RNAV 1	010	CA	-	-	334°	342.9°T	-		A430+	
	020	DF	CECFI	-	-	-	-			K180-
	030	TF	WORWE	-	064°	073.2°T	5.0			K210-
	040	TF	RERBU	-	055°	063.8°T	11.1			
SUBUG 1B RNAV 1	010	CA	-	-	334°	342.9°T	-		A430+	
	020	DF	CECFI	-	-	-	-			K180-
	030	TF	PAZEF	-	244°	253.2°T	5.0	L		K210-
	040	TF	SUBUG	-	181°	190.2°T	25.2			
UVATI 1B RNAV 1	010	CA	-	-	334°	342.9°T	-		A430+	
	020	DF	CECFI	-	-	-	-			K180-
	030	TF	UVATI	-	310°	319.2°T	21.1			

WPT COORD

SEE PAGE EFVA AD 2.15 - 1