

CHG: REF

023°35'

023°36'

023°37'

023°38'

29 DEC 2022

© FINTRAFIC ANS

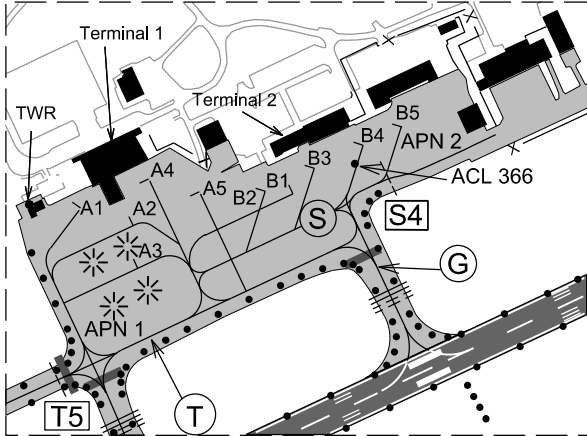
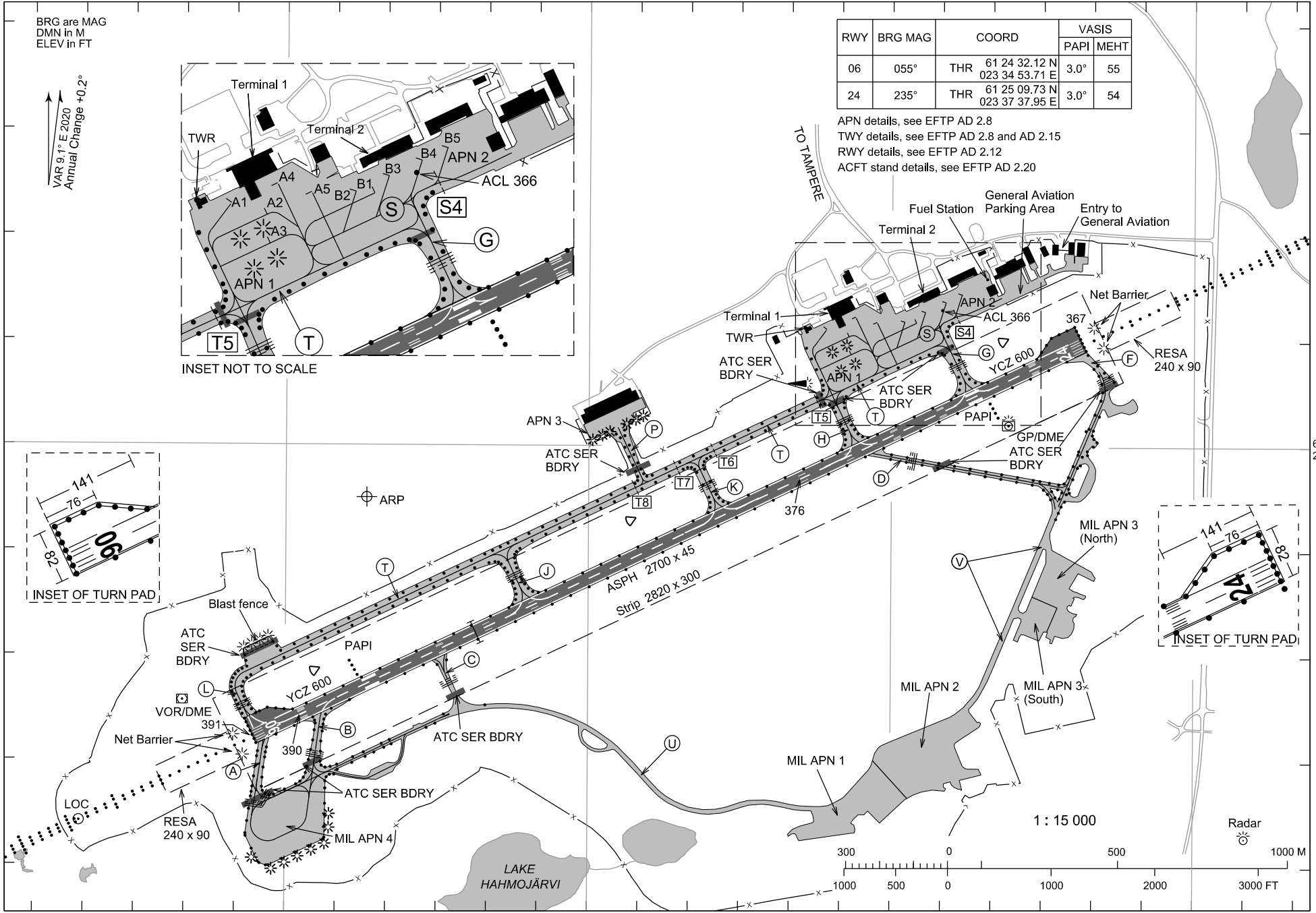
EFTP AD 2.4 - 1 (ADC)

BRG are MAG  
DMN in M  
ELEV in FT

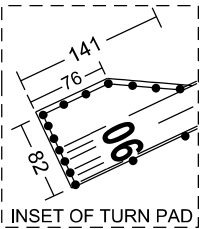
VAR 9.1° E 2020  
Annual Change +0.2°

RWY	BRG MAG	COORD	VASIS	
			PAPI	MEHT
06	055°	THR 61 24 32.12 N 023 34 53.71 E	3.0°	55
24	235°	THR 61 25 09.73 N 023 37 37.95 E	3.0°	54

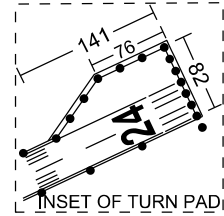
APN details, see EFTP AD 2.8  
TWY details, see EFTP AD 2.8 and AD 2.15  
RWY details, see EFTP AD 2.12  
ACFT stand details, see EFTP AD 2.20



INSET NOT TO SCALE



INSET OF TURN PAD



INSET OF TURN PAD

AERODROME CHART - ICAO

61 24 55 N  
023 35 16 E

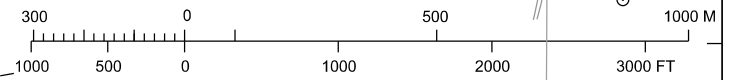
ELEV 391 FT

TWR 118 700  
GND 124 275

TAMPERE-PIRKKALA AERODROME  
TAMPERE, FINLAND

1 : 15 000

Radar



023°35'

023°36'

023°37'

023°38'

LAKE  
HAHMOJÄRVI

TO TAMPERE