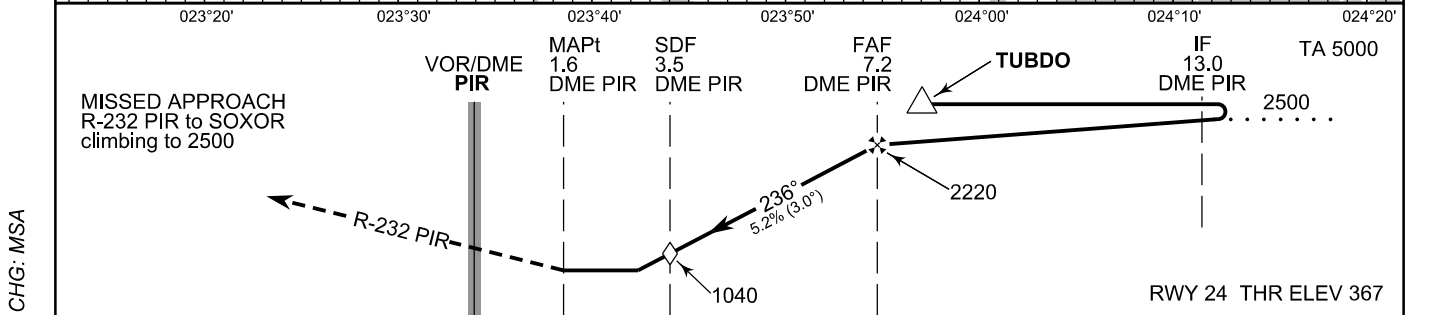
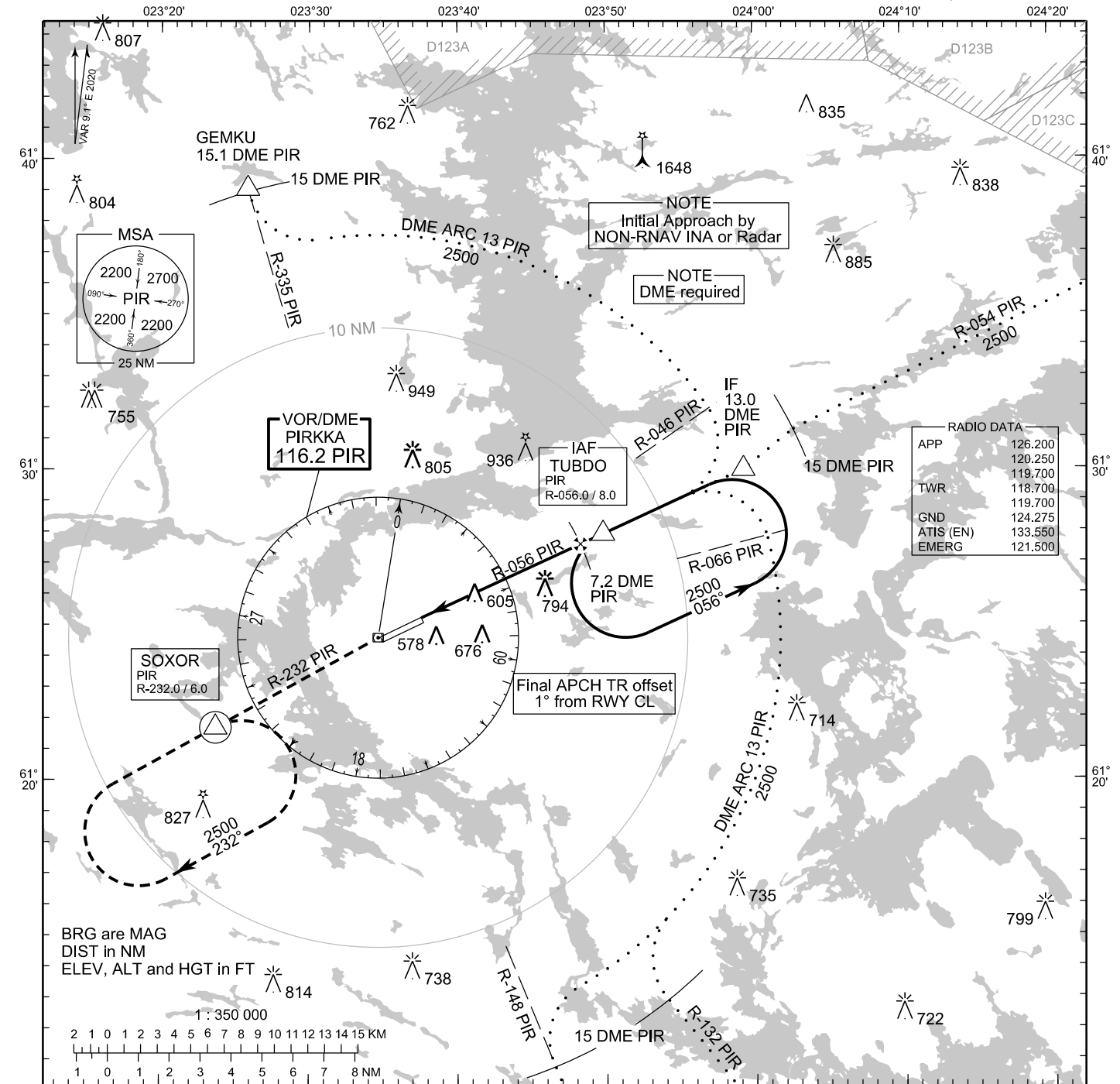


**INSTRUMENT
APPROACH CHART - ICAO**

ELEV 391 FT
HEIGHTS RELATED TO
THR RWY 24 ELEV 367 FT

**VOR RWY 24
TAMPERE-PIRKKALA AERODROME
TAMPERE, FINLAND**



| NM | 5 | 0 | 5 | 10 | NM |
|------------|-----------|------------|------------|------------|----|
| OCA (H) | A | B | C | D | |
| VOR | | 860 (490) | | | |
| VOR WO SDF | | 1040 (680) | | | |
| Circling | 880 (490) | 980 (580) | 1190 (800) | 1200 (810) | |

| Final Approach DIST | 3.0 DME | 4.0 DME | 5.0 DME | 6.0 DME | 7.0 DME | |
|---------------------|-----------|------------|-------------|-------------|-------------|------|
| Altitude (Height) | 880 (520) | 1200 (840) | 1520 (1150) | 1840 (1470) | 2160 (1790) | |
| | kt | 90 | 100 | 120 | 140 | 160 |
| FAF - MAPt 5.6 NM | min:sec | 3:44 | 3:22 | 2:48 | 2:24 | 2:06 |
| Rate of descent | ft/min | 480 | 530 | 640 | 740 | 850 |

Timing not authorized for defining the MAPt