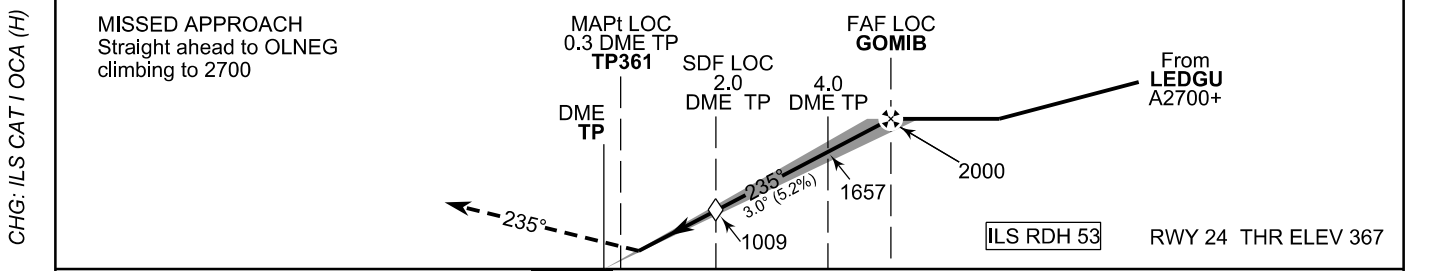
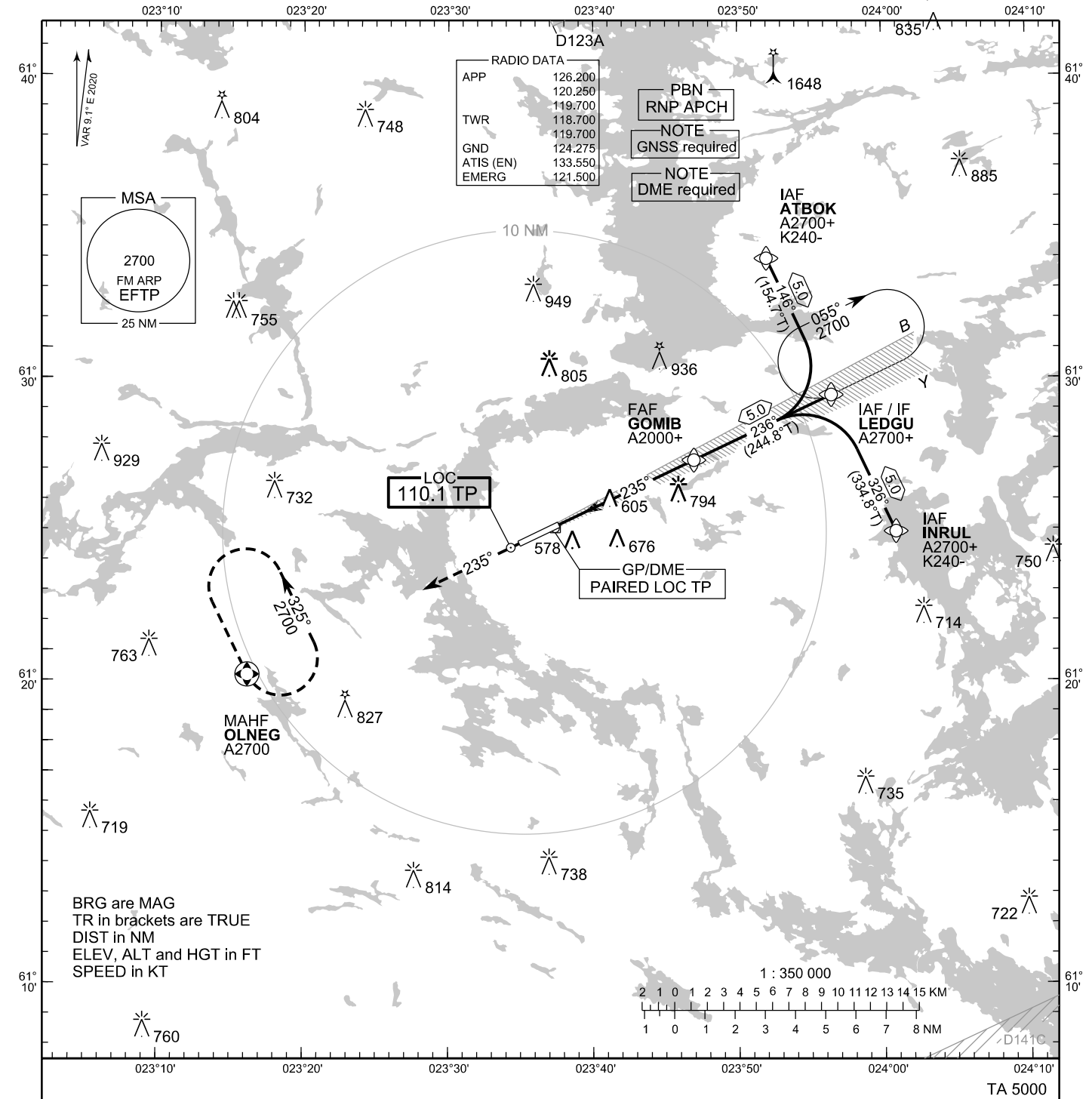


**INSTRUMENT  
APPROACH CHART - ICAO**

ELEV 391 FT  
HEIGHTS RELATED TO  
THR RWY 24 ELEV 367 FT

**ILS Z or LOC Z RWY 24  
TAMPERE-PIRKKALA AERODROME  
TAMPERE, FINLAND**



NM	OCA (H)				kt						
	A	B	C	D	90	100	120	140	160		
ILS CAT I	524 (157)	534 (167)	546 (179)	559 (192)	FAF - MAPt 4.8 NM						
LOC	860 (490)				min:sec	3:13	2:54	2:25	2:04	1:49	
LOC WO SDF	1010 (640)				Rate of descent	ft/min	480	530	640	740	850
Circling	880 (490)	980 (580)	1190 (800)	1200 (810)	Timing not authorized for defining the MAPt						

EFTP ILS Z or LOC Z RWY 24										
PROC ID NAV SPEC	SEQ NR	P/T	WPT			MAG	GEO TR	DIST NM	Constraints	
			ID	Type	Flyover				LVL	Speed
I24 INRUL RNP APCH	005	IF	INRUL	IAF	-				A2700+	K240-
	010	TF	LEDGU	IF	-	326°	334.8°T	5.0	A2700+	
	020	TF	GOMIB	FAF LOC	-	236°	244.8°T	5.0	A2000+	
	030	TF	TP361	MAPt LOC	Y	235°	244.1°T	-		
	040	CA	-	-	-	-	-	-	A900+	
	050	DF	OLNEG	MAHF	Y				A2700	

EFTP ILS Z or LOC Z RWY 24										
PROC ID NAV SPEC	SEQ NR	P/T	WPT			MAG	GEO TR	DIST NM	Constraints	
			ID	Type	Flyover				LVL	Speed
I24 LEDGU RNP APCH	010	IF	LEDGU	IAF/IF	-				A2700+	
	020	TF	GOMIB	FAF LOC	-	236°	244.8°T	5.0	A2000+	
	030	TF	TP361	MAPt LOC	Y	235°	244.1°T	-		
	040	CA	-	-	-	-	-	-	A900+	
	050	DF	OLNEG	MAHF	Y				A2700	

EFTP ILS Z or LOC Z RWY 24										
PROC ID NAV SPEC	SEQ NR	P/T	WPT			MAG	GEO TR	DIST NM	Constraints	
			ID	Type	Flyover				LVL	Speed
I24 ATBOK RNP APCH	005	IF	ATBOK	IAF	-				A2700+	K240-
	010	TF	LEDGU	IF	-	146°	154.7°T	5.0	A2700+	
	020	TF	GOMIB	FAF LOC	-	236°	244.8°T	5.0	A2000+	
	030	TF	TP361	MAPt LOC	Y	235°	244.1°T	-		
	040	CA	-	-	-	-	-	-	A900+	
	050	DF	OLNEG	MAHF	Y				A2700	

RNAV Holdings							
ID	INBD TR	INBD MAG	Turn Direction	Speed	MNM HLDG LVL	TIME	DIST NM
LEDGU	244.5°T	235°	Right	K230-	A2700	1 MIN	-
OLNEG	154.1°T	145°	Left	K230-	A2700	1 MIN	-

WPT COORD
SEE PAGE EFTP AD 2.15 - 1

FINAL APPROACH PARAMETERS			
LOC Gradient	ILS		RDH
	CAT	GPA	
5.24 % (3.00°)	I	3.00°	53 FT