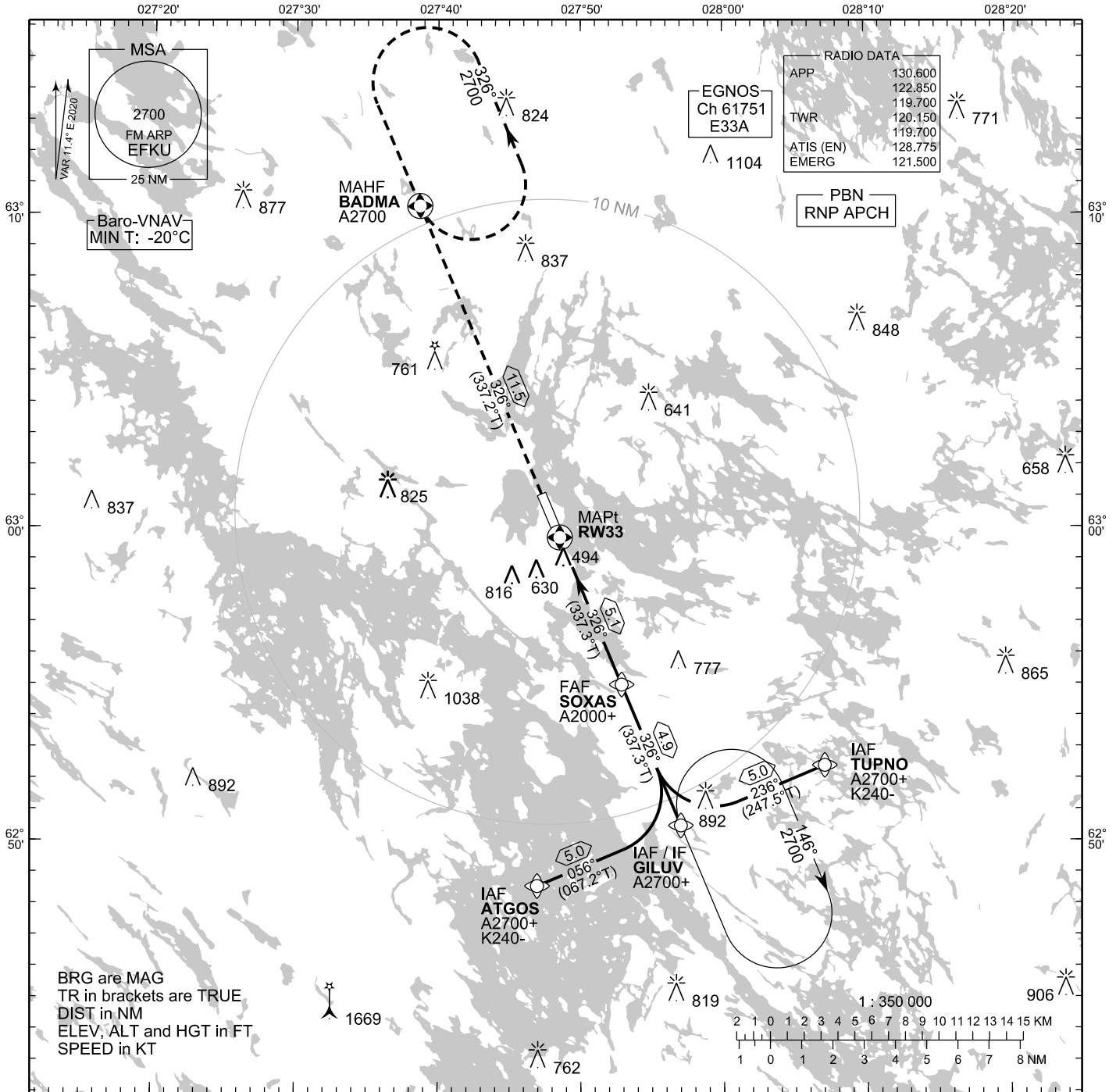


**INSTRUMENT
APPROACH CHART - ICAO**

ELEV 324 FT
HEIGHTS RELATED TO
THR RWY 33 ELEV 317 FT

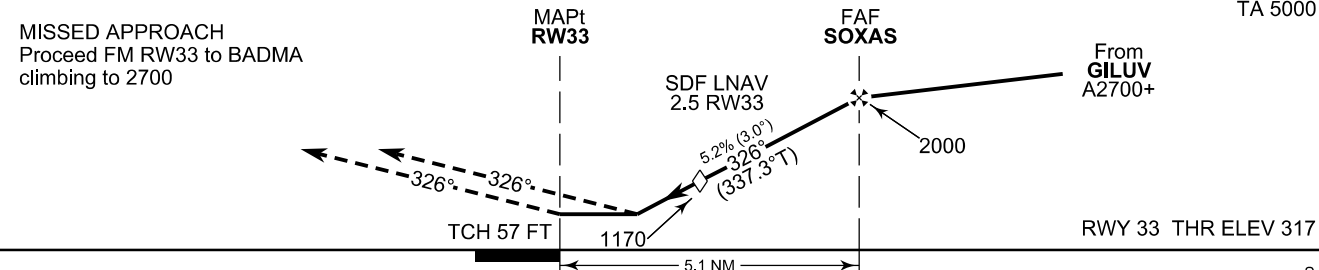
**RNP RWY 33
KUOPIO AERODROME
KUOPIO, FINLAND**



BRG are MAG
TR in brackets are TRUE
DIST in NM
ELEV, ALT and HGT in FT
SPEED in KT



CHG: Data Block REF



OCA (H)	A	B	C	D
LPV	557 (241)	569 (253)	578 (262)	588 (272)
LNAV/VNAV	623 (307)	635 (319)	644 (328)	654 (338)
LNAV	740 (430)			
Circling	930 (610)	1120 (790)	1210 (890)	1220 (900)

DIST FM THR	2.0 NM	3.0 NM	4.0 NM	5.0 NM		
Altitude (Height)	1010 (690)	1330 (1010)	1650 (1330)	1970 (1650)		
FAF - MAPt 5.1 NM	kt	90	100	120	140	160
min:sec	3:24	3:04	2:33	2:11	1:55	
Rate of descent	ft/min	480	530	640	740	850

Timing not authorized for defining the MAPt

EFKU RNP RWY 33										
PROC ID NAV SPEC	SEQ NR	P/T	WPT			MAG	GEO TR	DIST NM	Constraints	
			ID	Type	Flyover				LVL	Speed
H33 ATGOS RNP APCH	005	IF	ATGOS	IAF	-				A2700+	K240-
	010	TF	GILUV	IF	-	056°	067.2°T	5.0	A2700+	
	020	TF	SOXAS	FAF	-	326°	337.3°T	4.9	A2000+	
	030	TF	RW33	MAPt	Y	326°	337.3°T	5.1		
	040	TF	BADMA	MAHF	Y	326°	337.2°T	11.5	A2700	

EFKU RNP RWY 33										
PROC ID NAV SPEC	SEQ NR	P/T	WPT			MAG	GEO TR	DIST NM	Constraints	
			ID	Type	Flyover				LVL	Speed
H33 GILUV RNP APCH	010	IF	GILUV	IAF/IF	-				A2700+	
	020	TF	SOXAS	FAF	-	326°	337.3°T	4.9	A2000+	
	030	TF	RW33	MAPt	Y	326°	337.3°T	5.1		
	040	TF	BADMA	MAHF	Y	326°	337.2°T	11.5	A2700	

EFKU RNP RWY 33										
PROC ID NAV SPEC	SEQ NR	P/T	WPT			MAG	GEO TR	DIST NM	Constraints	
			ID	Type	Flyover				LVL	Speed
H33 TUPNO RNP APCH	005	IF	TUPNO	IAF	-				A2700+	K240-
	010	TF	GILUV	IF	-	236°	247.5°T	5.0	A2700+	
	020	TF	SOXAS	FAF	-	326°	337.3°T	4.9	A2000+	
	030	TF	RW33	MAPt	Y	326°	337.3°T	5.1		
	040	TF	BADMA	MAHF	Y	326°	337.2°T	11.5	A2700	

RNAV Holdings							
ID	INBD TR	INBD MAG	Turn Direction	Speed	MNM HLDG LVL	TIME	DIST NM
GILUV	337.2°T	326°	Right	K230-	A2700	1 MIN	-
BADMA	157.2°T	146°	Left	K230-	A2700	1 MIN	-

WPT COORD
SEE PAGE EFKU AD 2.15 - 1

FINAL APPROACH PARAMETERS			
LNAV Gradient	Baro-VNAV		TCH
	VPA	MNM T	
5.24 % (3.00°)	3.00°	-20°C	57 FT

SBAS DATA	
Approach ID	E33A
Service Provider	EGNOS
CRC remainder	2A 1D A2 9A
Channel number	61751
Data Block	SEE EFKU AD 2.15 - 3