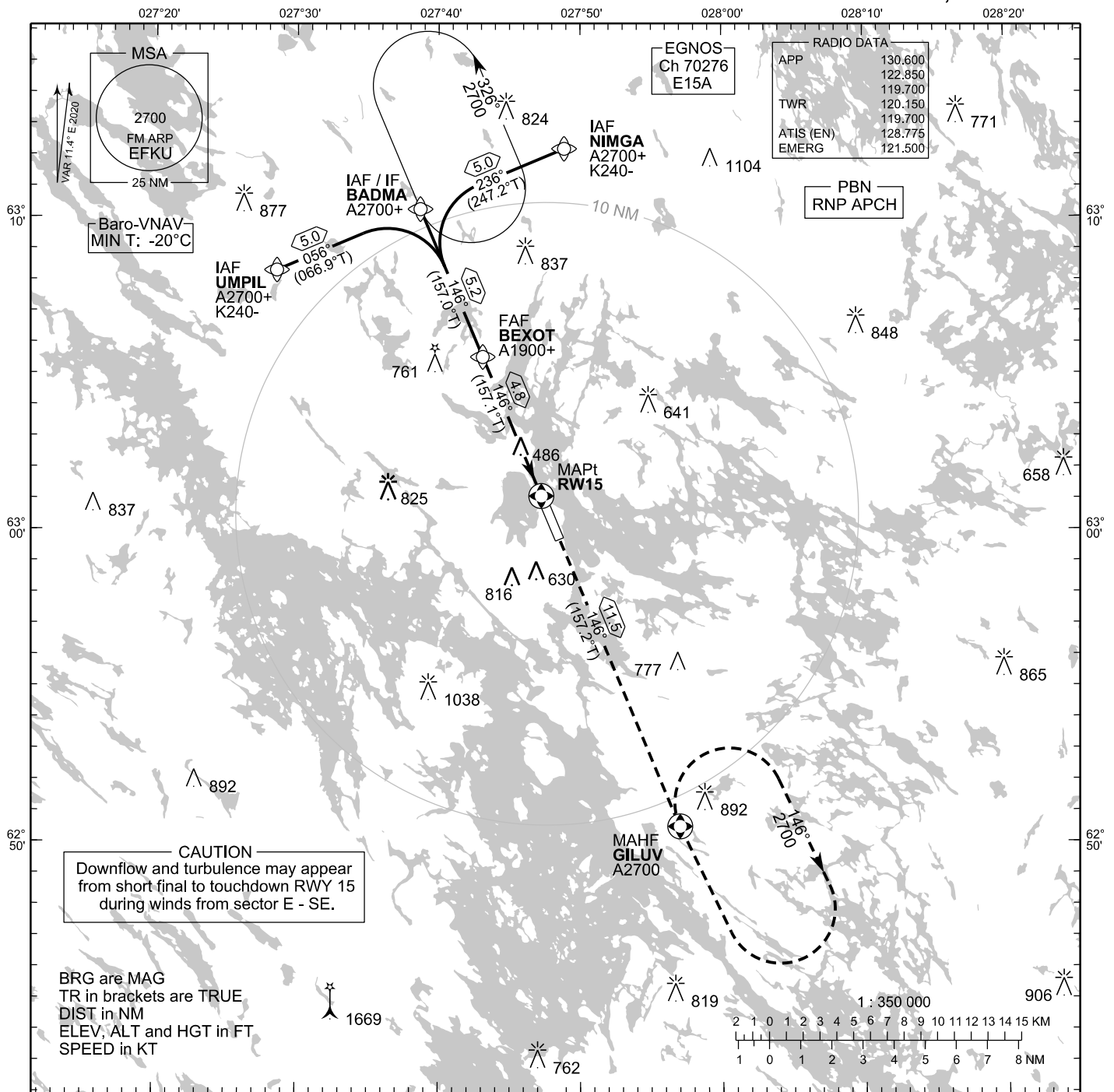


**INSTRUMENT  
APPROACH CHART - ICAO**

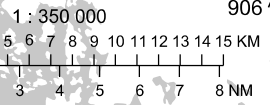
ELEV 324 FT  
HEIGHTS RELATED TO  
THR RWY 15 ELEV 307 FT

**RNP RWY 15  
KUOPIO AERODROME  
KUOPIO, FINLAND**

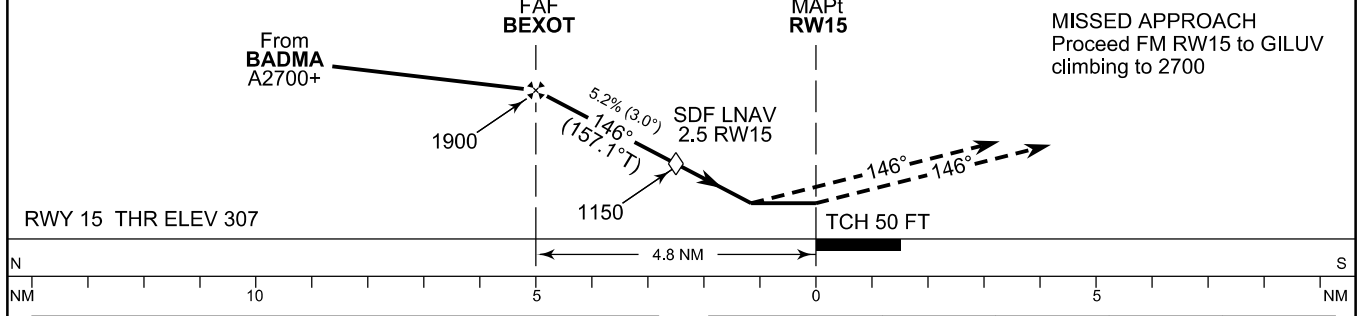
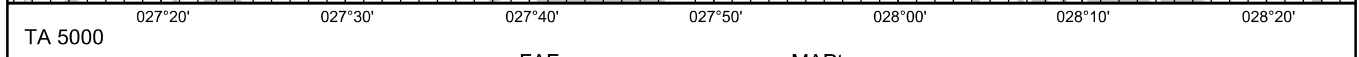


**CAUTION**  
Downflow and turbulence may appear from short final to touchdown RWY 15 during winds from sector E - SE.

BRG are MAG  
TR in brackets are TRUE  
DIST in NM  
ELEV, ALT and HGT in FT  
SPEED in KT



CHG: Data Block REF



OCA (H)	A	B	C	D
LPV	568 (261)	580 (273)	588 (281)	598 (291)
LNAV/VNAV	565 (258)	578 (271)	588 (281)	600 (293)
LNAV	740 (430)			
Circling	930 (610)	1120 (790)	1210 (890)	1220 (900)

DIST FM THR	5.0 NM	4.0 NM	3.0 NM	2.0 NM		
Altitude (Height)	1950 (1640)	1630 (1320)	1310 (1010)	990 (690)		
FAF - MAPt 4.8 NM	kt	90	100	120	140	160
Rate of descent	ft/min	480	530	640	740	850

Timing not authorized for defining the MAPt

EFKU RNP RWY 15										
PROC ID NAV SPEC	SEQ NR	P/T	WPT			MAG	GEO TR	DIST NM	Constraints	
			ID	Type	Flyover				LVL	Speed
H15 NIMGA RNP APCH	005	IF	NIMGA	IAF	-				A2700+	K240-
	010	TF	BADMA	IF	-	236°	247.2°T	5.0	A2700+	
	020	TF	BEXOT	FAF	-	146°	157.0°T	5.2	A1900+	
	030	TF	RW15	MAPt	Y	146°	157.1°T	4.8		
	040	TF	GILUV	MAHF	Y	146°	157.2°T	11.5	A2700	

EFKU RNP RWY 15										
PROC ID NAV SPEC	SEQ NR	P/T	WPT			MAG	GEO TR	DIST NM	Constraints	
			ID	Type	Flyover				LVL	Speed
H15 BADMA RNP APCH	010	IF	BADMA	IAF/IF	-				A2700+	
	020	TF	BEXOT	FAF	-	146°	157.0°T	5.2	A1900+	
	030	TF	RW15	MAPt	Y	146°	157.1°T	4.8		
	040	TF	GILUV	MAHF	Y	146°	157.2°T	11.5	A2700	

EFKU RNP RWY 15										
PROC ID NAV SPEC	SEQ NR	P/T	WPT			MAG	GEO TR	DIST NM	Constraints	
			ID	Type	Flyover				LVL	Speed
H15 UMPIL RNP APCH	005	IF	UMPIL	IAF	-				A2700+	K240-
	010	TF	BADMA	IF	-	056°	066.9°T	5.0	A2700+	
	020	TF	BEXOT	FAF	-	146°	157.0°T	5.2	A1900+	
	030	TF	RW15	MAPt	Y	146°	157.1°T	4.8		
	040	TF	GILUV	MAHF	Y	146°	157.2°T	11.5	A2700	

RNAV Holdings							
ID	INBD TR	INBD MAG	Turn Direction	Speed	MNM HLDG LVL	TIME	DIST NM
BADMA	157.2°T	146°	Left	K230-	A2700	1 MIN	-
GILUV	337.2°T	326°	Right	K230-	A2700	1 MIN	-

WPT COORD
SEE PAGE EFKU AD 2.15 - 1

FINAL APPROACH PARAMETERS			
LNAV Gradient	Baro-VNAV		TCH
	VPA	MNM T	
5.24 % (3.00°)	3.00°	-20°C	50 FT

SBAS DATA	
Approach ID	E15A
Service Provider	EGNOS
CRC remainder	F5 15 8E 32
Channel number	70276
Data Block	SEE EFKU AD 2.15 - 3