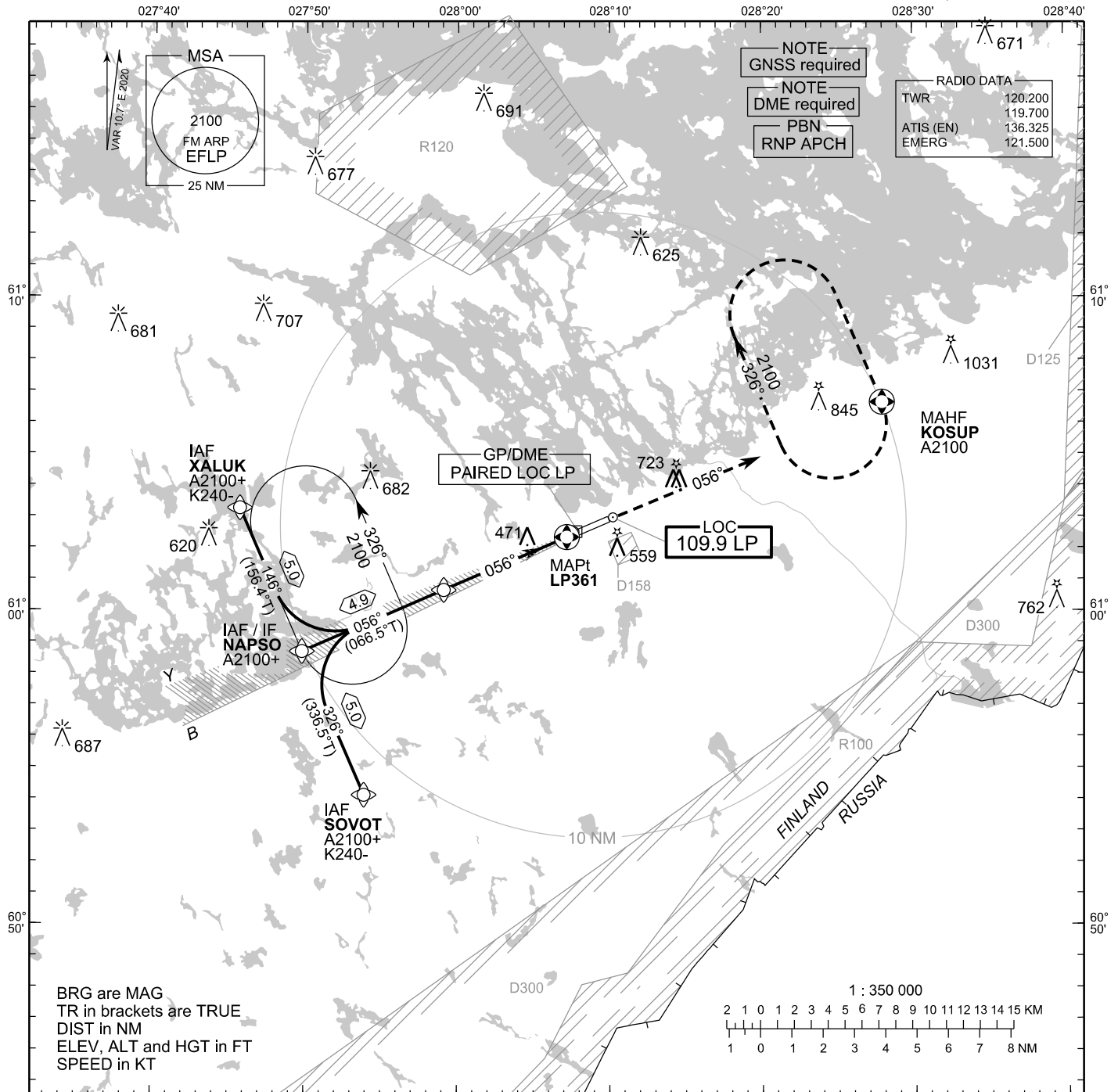


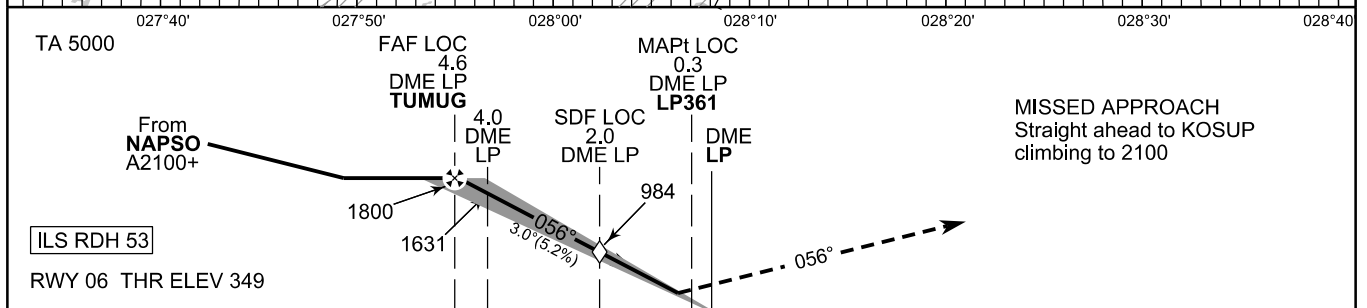
INSTRUMENT
APPROACH CHART - ICAO

ELEV 349 FT
HEIGHTS RELATED TO
THR RWY 06 ELEV 349 FT

ILS or LOC RWY 06
LAPPEENRANTA AERODROME
LAPPEENRANTA, FINLAND



CHG: ADDN D300. DEL D200



	10	5	0	5	10	NM
OCA (H)	A	B	C	D		
ILS CAT I	514 (165)	522 (173)	531 (182)	540 (191)		
LOC	720 (370)					
LOC WO SDF	980 (635)					
Circling	860 (510)	1020 (670)	1120 (770)	1120 (770)		

	kt	90	100	120	140	160
FAF - MAPt 4.3 NM	min:sec	2:51	2:34	2:08	1:50	1:36
Rate of descent	ft/min	480	530	640	740	850

Timing not authorized for defining the MAPt

EFLP ILS or LOC RWY 06										
PROC ID NAV SPEC	SEQ NR	P/T	WPT			MAG	GEO TR	DIST NM	Constraints	
			ID	Type	Flyover				LVL	Speed
I06 XALUK RNP APCH	005	IF	XALUK	IAF	-	146°	156.4°T	5.0	A2100+	K240-
	010	TF	NAPSO	IF	-				A2100+	
	020	TF	TUMUG	FAF LOC	-	056°	066.5°T	4.9	A1800+	
	030	TF	LP361	MAPt LOC	Y	056°	066.7°T	-	A800+	
	040	CA	-	-	-					
	050	DF	KOSUP	MAHF	Y	-	-	-	A2100	

EFLP ILS or LOC RWY 06										
PROC ID NAV SPEC	SEQ NR	P/T	WPT			MAG	GEO TR	DIST NM	Constraints	
			ID	Type	Flyover				LVL	Speed
I06 NAPSO RNP APCH	010	IF	NAPSO	IAF/IF	-	056°	066.5°T	4.9	A2100+	
	020	TF	TUMUG	FAF LOC	-				A1800+	
	030	TF	LP361	MAPt LOC	Y	056°	066.7°T	-	A800+	
	040	CA	-	-	-					
	050	DF	KOSUP	MAHF	Y	-	-	-	A2100	

EFLP ILS or LOC RWY 06										
PROC ID NAV SPEC	SEQ NR	P/T	WPT			MAG	GEO TR	DIST NM	Constraints	
			ID	Type	Flyover				LVL	Speed
I06 SOVOT RNP APCH	005	IF	SOVOT	IAF	-	326°	336.5°T	5.0	A2100+	K240-
	010	TF	NAPSO	IF	-				A2100+	
	020	TF	TUMUG	FAF LOC	-	056°	066.5°T	4.9	A1800+	
	030	TF	LP361	MAPt LOC	Y	056°	066.7°T	-	A800+	
	040	CA	-	-	-					
	050	DF	KOSUP	MAHF	Y	-	-	-	A2100	

RNAV Holdings							
ID	INBD TR	INBD MAG	Turn Direction	Speed	MNM HLDG LVL	TIME	DIST NM
NAPSO	156.4°T	146°	Left	K230-	A2100	1 MIN	-
KOSUP	157.0°T	146°	Right	K230-	A2100	1 MIN	-

WPT COORD
SEE PAGE EFLP AD 2.15 - 1

FINAL APPROACH PARAMETERS			
LOC Gradient	ILS		RDH
	CAT	GPA	
5.24 % (3.00°)	I	3.00°	53 FT