

# AIP SUPPLEMENT - SUOMI / FINLAND

Aeronautical Information Service

www.ais.fi

Fintraffic ANS, PL 157, FI-01531 VANTAA, ais@fintraffic.fi

AIP SUP NR  
**55 / 2021**

**AIRAC**

**WEF**  
**17 JUN 2021**

## TAMPERE-PIRKKALAN LENTOASEMA (EFTP), LENTOMENETELMÄT AJALLA 17.6. - 12.8.2021

REF AIP SUP 52/2021

Alla luetellut lentomenetelmät on julkaistu ajalle **17.6. - 12.8.2021** tämän Supplementin liitteinä.

## TAMPERE-PIRKKALA AERODROME (EFTP), INSTRUMENT APPROACH PROCEDURES FROM 17 JUN TO 12 AUG 2021

REF AIP SUP 52/2021

The instrument approach procedures listed below have been published **for the period of 17 JUN - 12 AUG 2021** as Appendices to this Supplement.

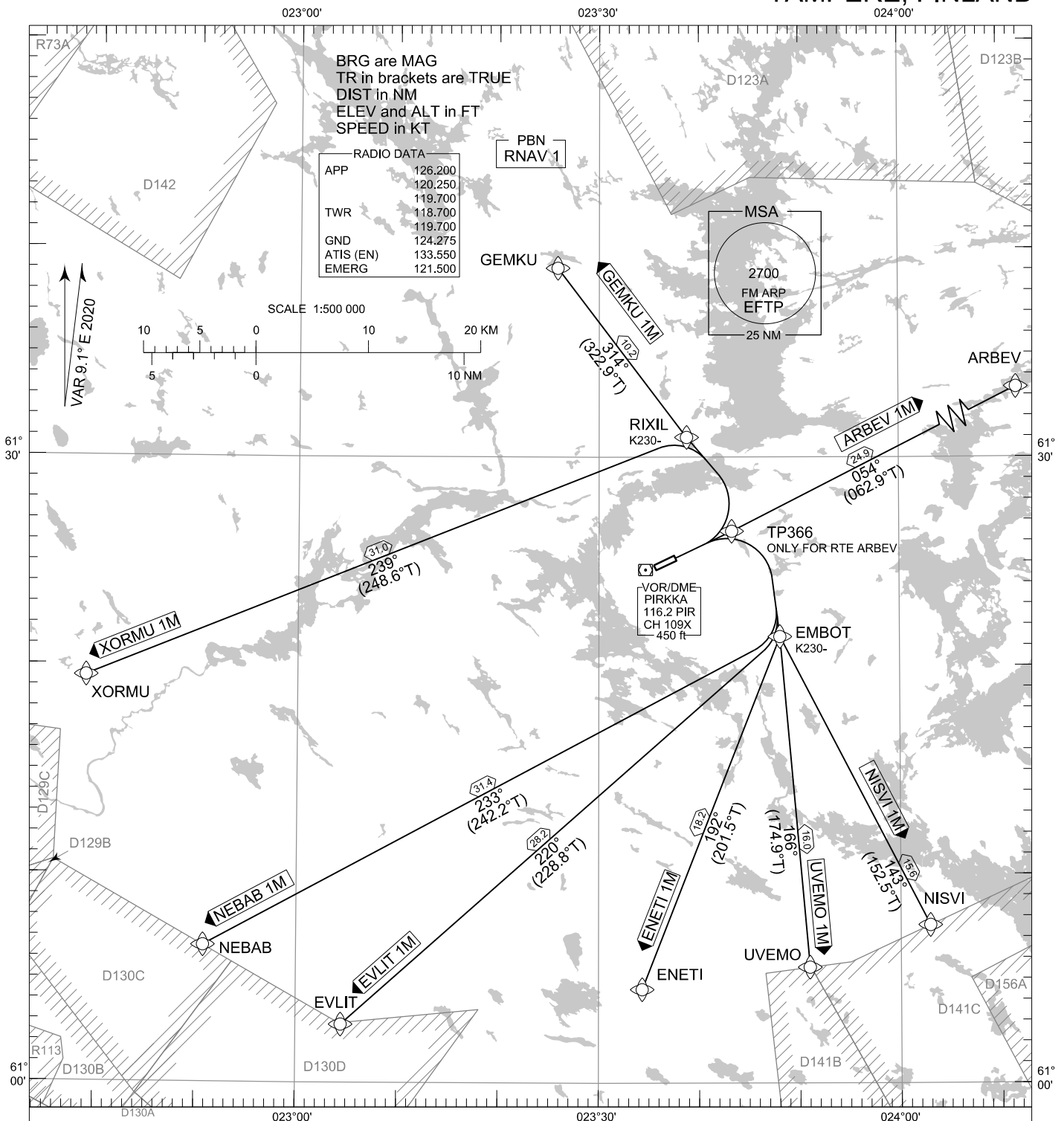
### LIITTEET / APPENDICES:

1. EFTP RNAV SID RWY 06C
2. EFTP RNAV STAR RWY 06C
3. EFTP RNP RWY 06C

STANDARD DEPARTURE CHART  
INSTRUMENT (SID) - ICAO

TRANSITION ALT  
5000

RNAV<sub>(GNSS)</sub> SID RWY 06C  
TAMPERE-PIRKKALA AERODROME  
TAMPERE, FINLAND



RNAV SID RWY 06C

ARBEV 1M ENETI 1M EVLIT 1M GEMKU 1M NEBAB 1M NISVI 1M UVEMO 1M XORMU 1M

DME/DME OPS: NOT SUPPORTED

ROUTES: RNAV PROC CODING ON THE VERSO OF THE CHART

SQUAWK: WHEN LINING UP SQUAWK THE ASSIGNED CODE

INITIAL CLIMB: MNM TURNING ALTITUDE ACCORDING TO RTE CODING

RADIO CONTACT: MAINTAIN TWR FREQ UNTIL 1500 FT, THEN CONTACT PIRKKALA RADAR FREQ 126.200

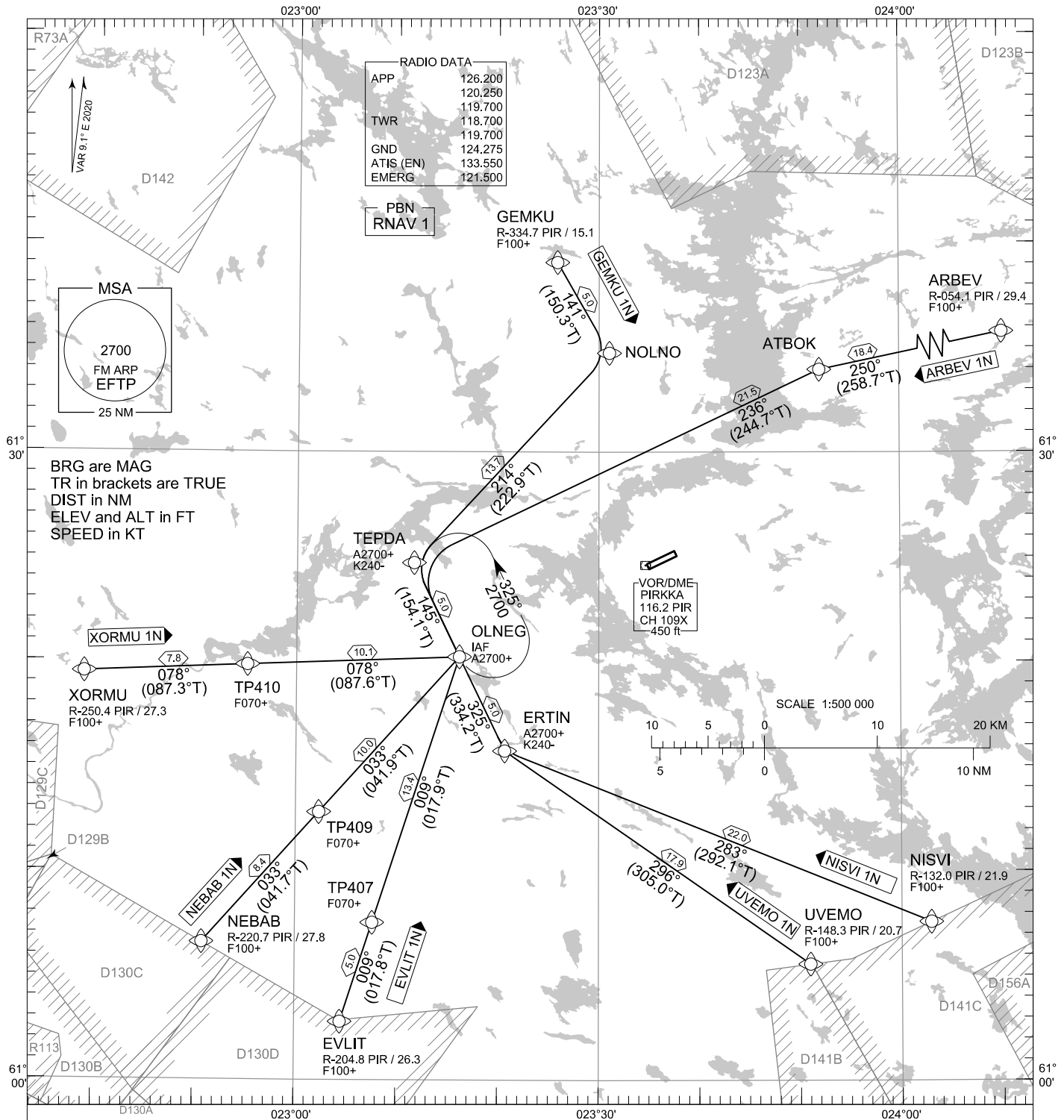
NOISE ABATEMENT: AFTER TAKE-OFF CLIMB AS RAPIDLY AS PRACTICABLE TO AT LEAST 2000 FT ABOVE AD ELEV  
PUBLISHED SID ROUTES ARE ALSO MINIMUM NOISE ROUTINGS

AREA MNM ALT: SEE AMA INDEX, AIP ENR 6.1 - 3

EFTP RNAV SID RWY 06C										
RTE NAV SPEC	SEQ NR	P/T	WPT		MAG	GEO TR	DIST NM	Turn Direction	Constraints	
			ID	Flyover					LVL	Speed
ARBEV 1M RNAV 1	010	CA	-	-	055°	064.1°T	-		A890+	
	020	DF	TP366	-	-	-	-			
	030	TF	ARBEV	-	054°	062.9°T	24.9			
ENETI 1M RNAV 1	010	CA	-	-	055°	064.1°T	-	R	A1100+	
	020	DF	EMBOT	-	-	-	-			K230-
	030	TF	ENETI	-	192°	201.5°T	18.2			
EVLIT 1M RNAV 1	010	CA	-	-	055°	064.1°T	-	R	A1100+	
	020	DF	EMBOT	-	-	-	-			K230-
	030	TF	EVLIT	-	220°	228.8°T	28.2			
GEMKU 1M RNAV 1	010	CA	-	-	055°	064.1°T	-	L	A1100+	
	020	DF	RIXIL	-	-	-	-			K230-
	030	TF	GEMKU	-	314°	322.9°T	10.2			
NEBAB 1M RNAV 1	010	CA	-	-	055°	064.1°T	-	R	A1100+	
	020	DF	EMBOT	-	-	-	-			K230-
	030	TF	NEBAB	-	233°	242.2°T	31.4			
NISVI 1M RNAV 1	010	CA	-	-	055°	064.1°T	-	R	A1100+	
	020	DF	EMBOT	-	-	-	-			K230-
	030	TF	NISVI	-	143°	152.5°T	15.6			
UVEMO 1M RNAV 1	010	CA	-	-	055°	064.1°T	-	R	A1100+	
	020	DF	EMBOT	-	-	-	-			K230-
	030	TF	UVEMO	-	166°	174.9°T	16.0			
XORMU 1M RNAV 1	010	CA	-	-	055°	064.1°T	-	L	A1100+	
	020	DF	RIXIL	-	-	-	-			K230-
	030	TF	XORMU	-	239°	248.6°T	31.0			

**WPT COORD**

SEE PAGE EFTP AD 2.15 - 1



**RNAV STAR RWY 06C**

ARBEV 1N EVLIT 1N GEMKU 1N NEBAB 1N NISVI 1N UVEMO 1N XORMU 1N

DME/DME OPS: NOT SUPPORTED

RCF: SELECT TRANSPONDER CODE 7600

ROUTES: RNAV PROC CODING ON THE VERSO OF THE CHART  
ATC WILL GIVE DESCENT CLEARANCES

RNAV STAR HAS BEEN GIVEN AND ACKNOWLEDGED:  
FOLLOW THE STAR TO THE RESPECTIVE RWY AND  
EXECUTE IAP AND LAND

WPT CONSTRAINTS: ALT / FL / SPEED CONSTRAINTS MUST ALWAYS BE FOLLOWED AS  
PUBLISHED UNLESS EXPLICITLY CANCELLED BY ATC

DURING RADAR VECTORING BEFORE IAF:  
IN ACCORDANCE WITH THE RULES OF THE AIR

CD OPS: BY ATC CLR IF TFC PERMITS. PLAN CD PATH ACCORDING TO STAR

AREA MNM ALT: SEE AMA INDEX, AIP ENR 6.1 - 3

NOISE ABATEMENT: AVOID OVERFLYING THE CITY OF TAMPERE BELOW 2000

EFTP RNAV STAR RWY 06C										
RTE NAV SPEC	SEQ NR	P/T	WPT		MAG	GEO TR	DIST NM	Constraints		
			ID	Flyover				LVL	LVL	Speed
ARBEV 1N RNAV 1	010	IF	ARBEV	-	-	-	-	F100+		
	020	TF	ATBOK	-	250°	258.7°T	18.4			
	030	TF	TEPDA	-	236°	244.7°T	21.5	A2700+		K240-
	040	TF	OLNEG	-	145°	154.1°T	5.0	A2700+		

EVLIT 1N RNAV 1	010	IF	EVLIT	-	-	-	-	F100+		
	020	TF	TP407	-	009°	017.8°T	5.0	F070+		
	030	TF	OLNEG	-	009°	017.9°T	13.4	A2700+		

GEMKU 1N RNAV 1	010	IF	GEMKU	-	-	-	-	F100+		
	020	TF	NOLNO	-	141°	150.3°T	5.0			
	030	TF	TEPDA	-	214°	222.9°T	13.7	A2700+		K240-
	040	TF	OLNEG	-	145°	154.1°T	5.0	A2700+		

NEBAB 1N RNAV 1	010	IF	NEBAB	-	-	-	-	F100+		
	020	TF	TP409	-	033°	041.7°T	8.4	F070+		
	030	TF	OLNEG	-	033°	041.9°T	10.0	A2700+		

NISVI 1N RNAV 1	010	IF	NISVI	-	-	-	-	F100+		
	020	TF	ERTIN	-	283°	292.1°T	22.0	A2700+		K240-
	030	TF	OLNEG	-	325°	334.2°T	5.0	A2700+		

UVEMO 1N RNAV 1	010	IF	UVEMO	-	-	-	-	F100+		
	020	TF	ERTIN	-	296°	305.0°T	17.9	A2700+		K240-
	030	TF	OLNEG	-	325°	334.2°T	5.0	A2700+		

XORMU 1N RNAV 1	010	IF	XORMU	-	-	-	-	F100+		
	020	TF	TP410	-	078°	087.3°T	7.8	F070+		
	030	TF	OLNEG	-	078°	087.6°T	10.1	A2700+		

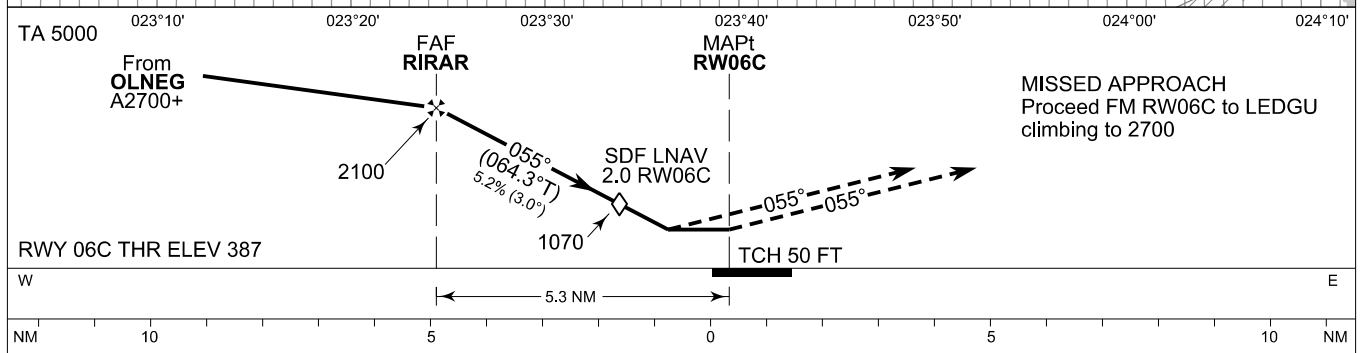
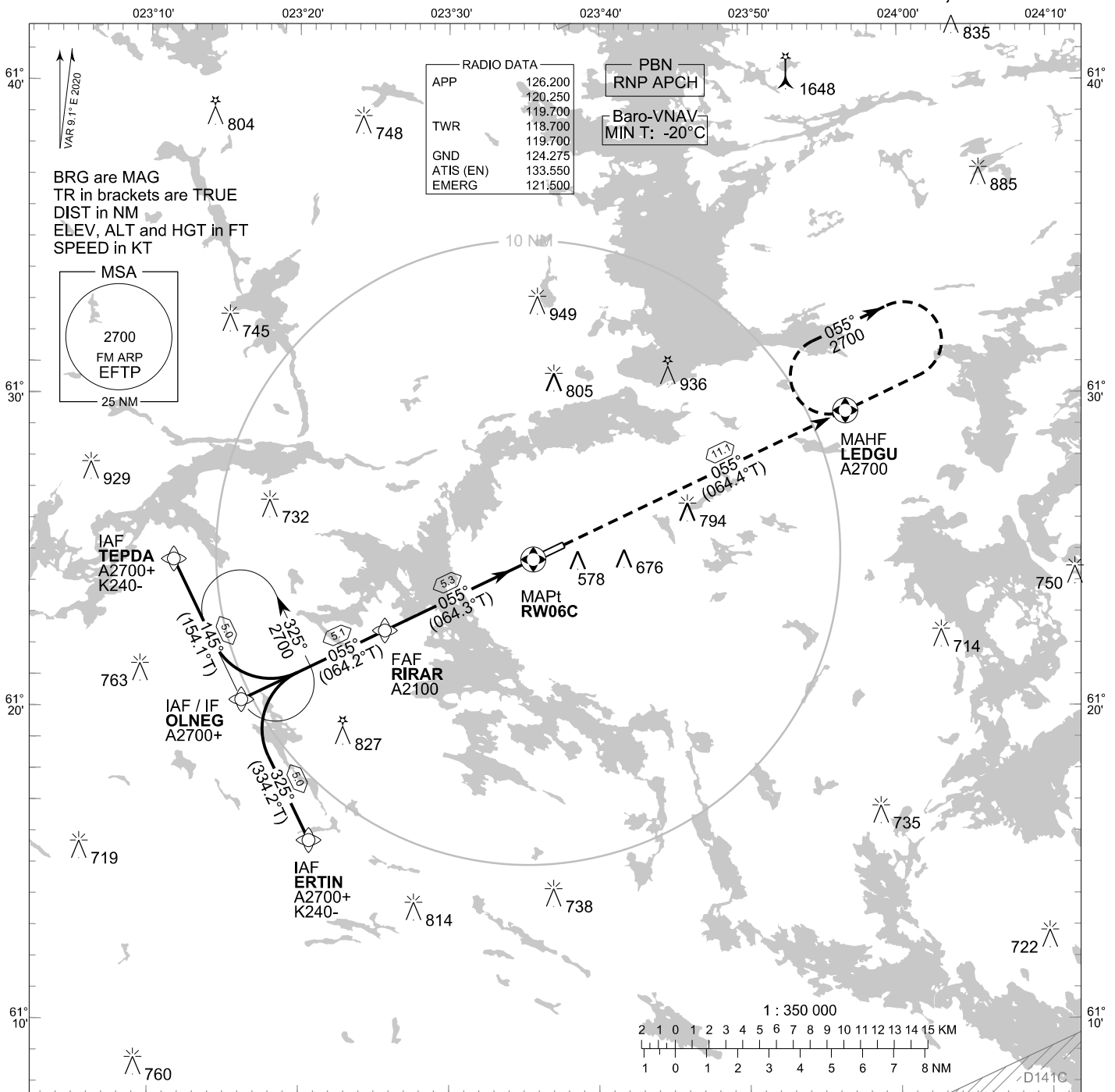
RNAV Holdings								
ID	INBD TR	INBD MAG	Turn Direction	Speed	MNM HLDG LVL	TIME	DIST NM	
OLNEG	154.1°T	145°	Left	K230-	A2700	1 MIN	-	

WPT COORD
SEE PAGE EFTP AD 2.15 - 1

**INSTRUMENT  
APPROACH CHART - ICAO**

ELEV 391 FT  
HEIGHTS RELATED TO  
THR RWY 06C ELEV 387 FT

**RNP RWY 06C  
TAMPERE-PIRKKALA AERODROME  
TAMPERE, FINLAND**



OCA (H)	A	B	C	D
LNAV/VNAV	662 (275)	674 (287)	683 (296)	693 (306)
LNAV	780 (390)			
Circling	880 (490)	980 (580)	1190 (800)	1200 (810)

DIST FM THR	4.0 NM		3.0 NM		2.0 NM	
	Altitude (Height)	kt	Altitude (Height)	kt	Altitude (Height)	kt
Altitude (Height)	1710 (1320)	90	1390 (1010)	100	1070 (690)	120
FAF - MAPt 5.3 NM	min:sec	3:31	3:10	2:38	2:16	1:59
Rate of descent	ft/min	480	530	640	740	850

Timing not authorized for defining the MAPt

EFTP RNP RWY 06C										
PROC ID NAV SPEC	SEQ NR	P/T	WPT			MAG	GEO TR	DIST NM	Constraints	
			ID	Type	Flyover				LVL	Speed
H06C TEPDA RNP APCH	005	IF	TEPDA	IAF	-				A2700+	K240-
	010	TF	OLNEG	IF	-	145°	154.1°T	5.0	A2700+	
	020	TF	RIRAR	FAF	-	055°	064.2°T	5.1	A2100+	
	030	TF	RW06C	MAPt	Y	055°	064.3°T	5.3		
	040	TF	LEDGU	MAHF	Y	055°	064.4°T	11.1	A2700	

EFTP RNP RWY 06C										
PROC ID NAV SPEC	SEQ NR	P/T	WPT			MAG	GEO TR	DIST NM	Constraints	
			ID	Type	Flyover				LVL	Speed
H06C OLNEG RNP APCH	010	IF	OLNEG	IAF/IF	-				A2700+	
	020	TF	RIRAR	FAF	-	055°	064.2°T	5.1	A2100+	
	030	TF	RW06C	MAPt	Y	055°	064.3°T	5.3		
	040	TF	LEDGU	MAHF	Y	055°	064.4°T	11.1	A2700	

EFTP RNP RWY 06C										
PROC ID NAV SPEC	SEQ NR	P/T	WPT			MAG	GEO TR	DIST NM	Constraints	
			ID	Type	Flyover				LVL	Speed
H06C ERTIN RNP APCH	005	IF	ERTIN	IAF	-				A2700+	K240-
	010	TF	OLNEG	IF	-	325°	334.2°T	5.0	A2700+	
	020	TF	RIRAR	FAF	-	055°	064.2°T	5.1	A2100+	
	030	TF	RW06C	MAPt	Y	055°	064.3°T	5.3		
	040	TF	LEDGU	MAHF	Y	055°	064.4°T	11.1	A2700	

RNAV Holdings							
ID	INBD TR	INBD MAG	Turn Direction	Speed	MNM HLDG LVL	TIME	DIST NM
OLNEG	154.1°T	145°	Left	K230-	A2700	1 MIN	-
LEDGU	244.5°T	235°	Right	K230-	A2700	1 MIN	-

WPT COORD	
ID	COORD
TEPDA	612441.81N 0231138.16E
ERTIN	611543.32N 0232040.97E
OLNEG	612012.64N 0231610.21E
RIRAR	612225.38N 0232542.89E
RW06C	612441.88N 0233536.29E
LEDGU	612926.24N 0235627.36E

FINAL APPROACH PARAMETERS			
LNAV Gradient	Baro-VNAV		TCH
	VPA	MNM T	
5.24 % (3.00°)	3.00°	-20°C	50 FT