

CHG: ADDN P45, CHG VFR REP VESPA. DEL VFR REP KIITI

12 NOV 2015

© FINAVIA

EFTU AD 2.14 - 1 (VAC)

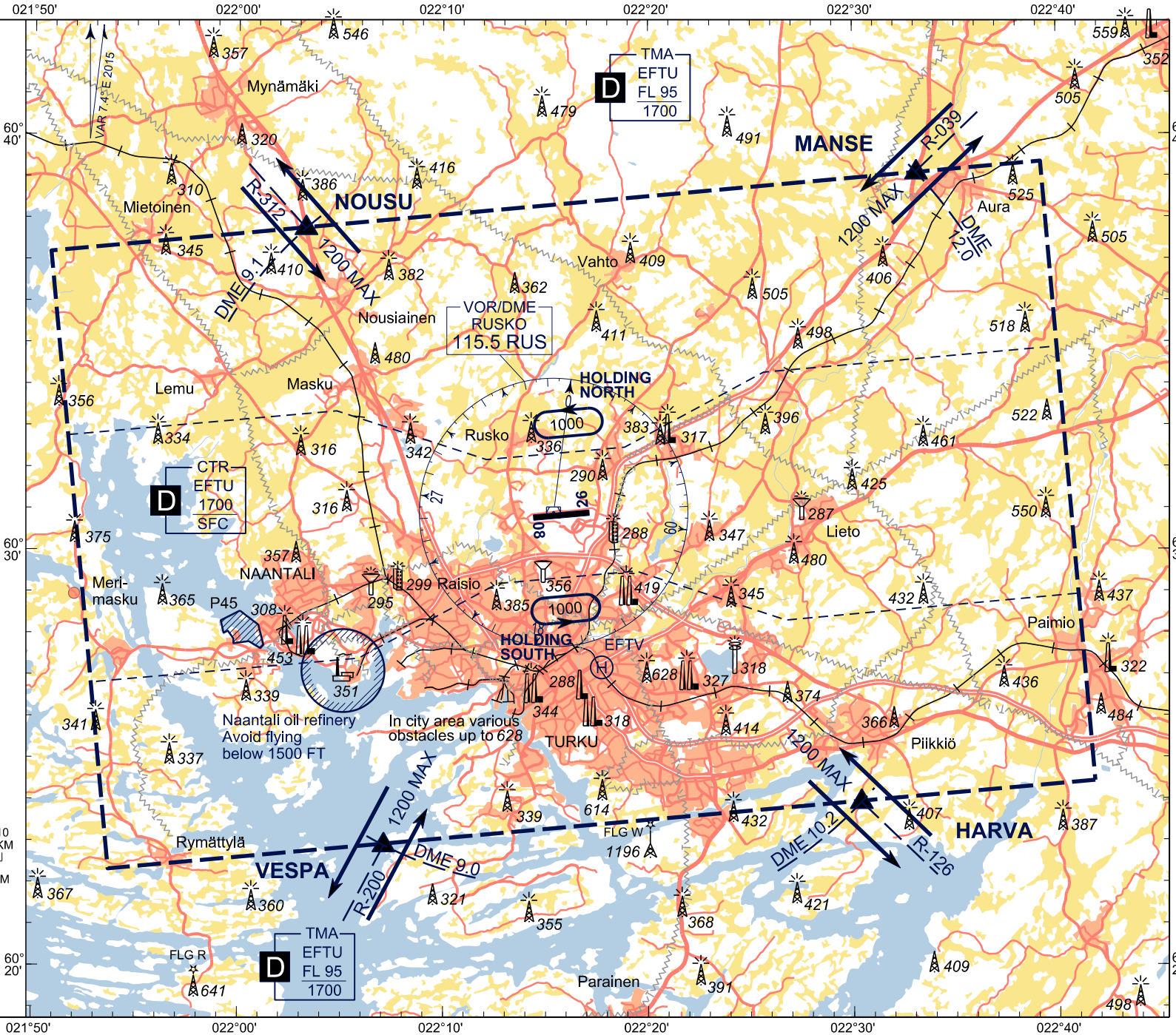
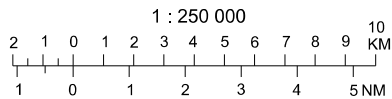
All RDL and DME FM VOR/DME RUS
BRG are MAG
DIST in NM
ALT and ELEV in FT

RADIO DATA

| | |
|-----------|---------|
| TWR | 118.300 |
| APP | 119.700 |
| ATIS (EN) | 130.050 |
| EMERG | 121.500 |

| Airspace | Hours of applicability | Airspace class | RMK |
|----------|------------------------|----------------|-----|
| EFTU CTR | H24 | D | - |
| EFTU TMA | H24 | D | - |

Heliport
EFTV
Turun Yliopistollinen keskussairaala



ELEV 162 FT

TURKU AERODROME
TURKU, FINLAND