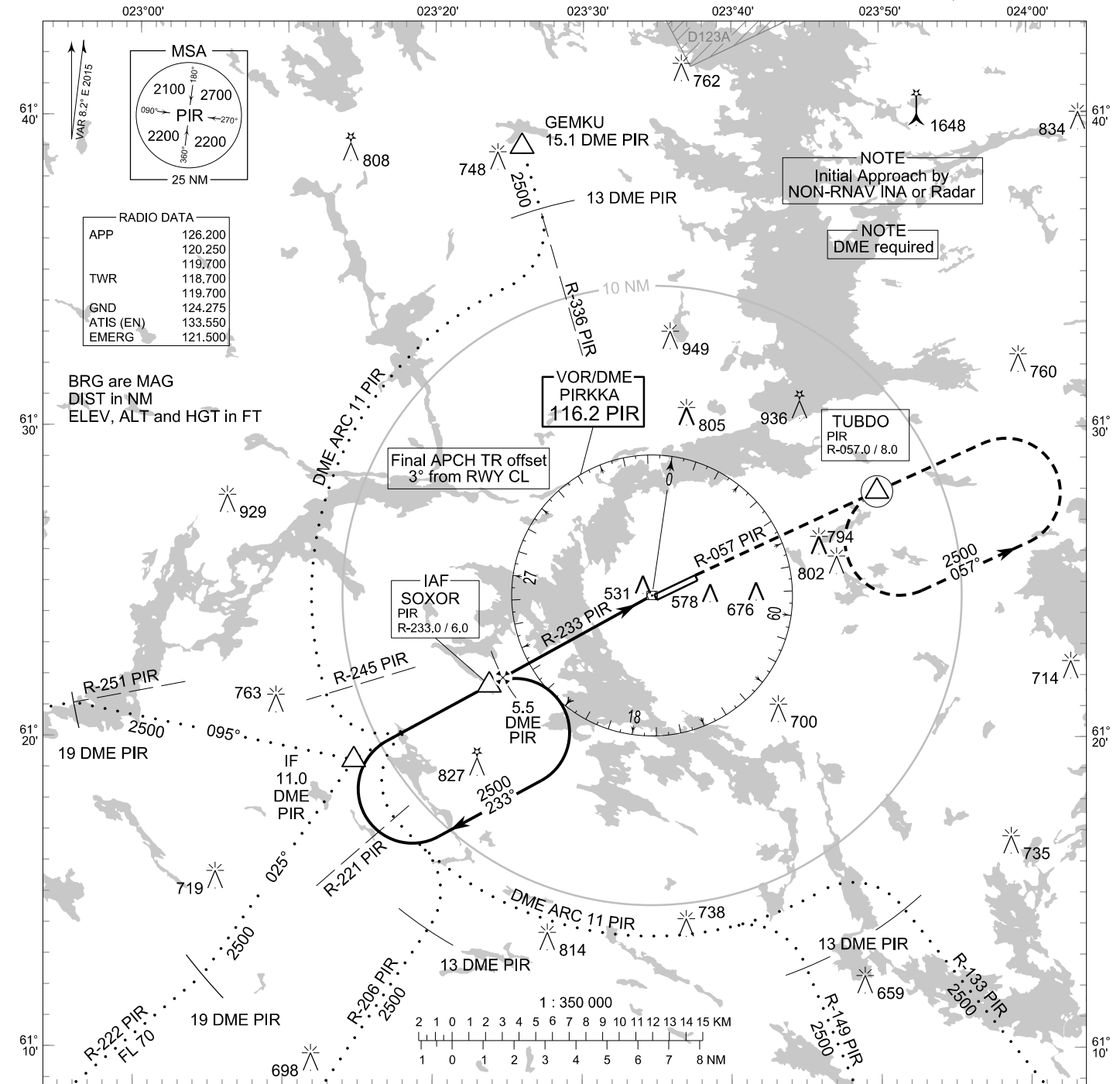


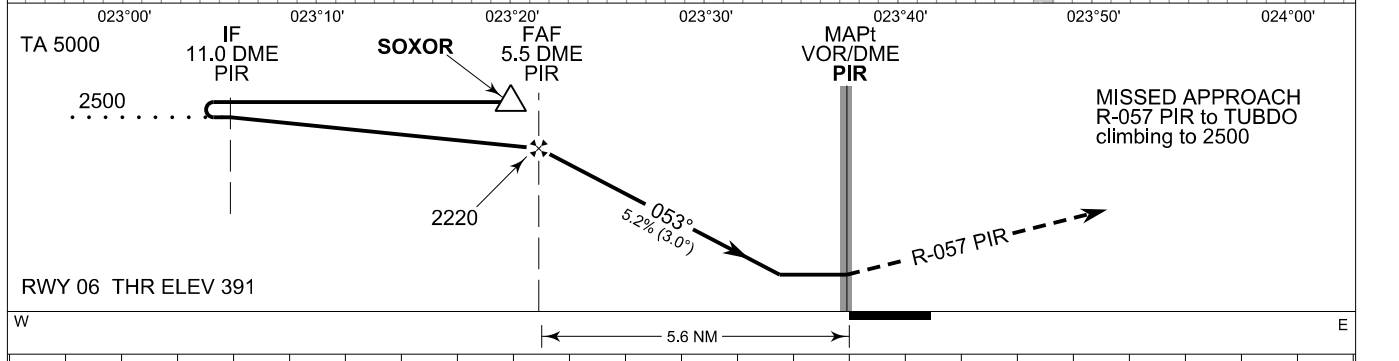
**INSTRUMENT  
APPROACH CHART - ICAO**

ELEV 391 FT  
HEIGHTS RELATED TO  
AERODROME ELEV

**VOR RWY 06  
TAMPERE-PIRKKALA AERODROME  
TAMPERE, FINLAND**



CHG: RADIO DATA, INA



OCA (H)	A	B	C	D
VOR	780 (390)			
Circling	880 (490)	980 (580)	1190 (800)	1200 (810)

Final Approach DIST	5.0 DME	4.0 DME	3.0 DME	2.0 DME		
Altitude (Height)	2060 (1670)	1740 (1350)	1420 (1030)	1100 (710)		
	kt	90	100	120	140	160
FAF - MAPt 5.5 NM	min:sec	3:40	3:18	2:45	2:21	2:04
Rate of descent	ft/mIn	480	530	640	740	850

Timing not authorized for defining the MAPt