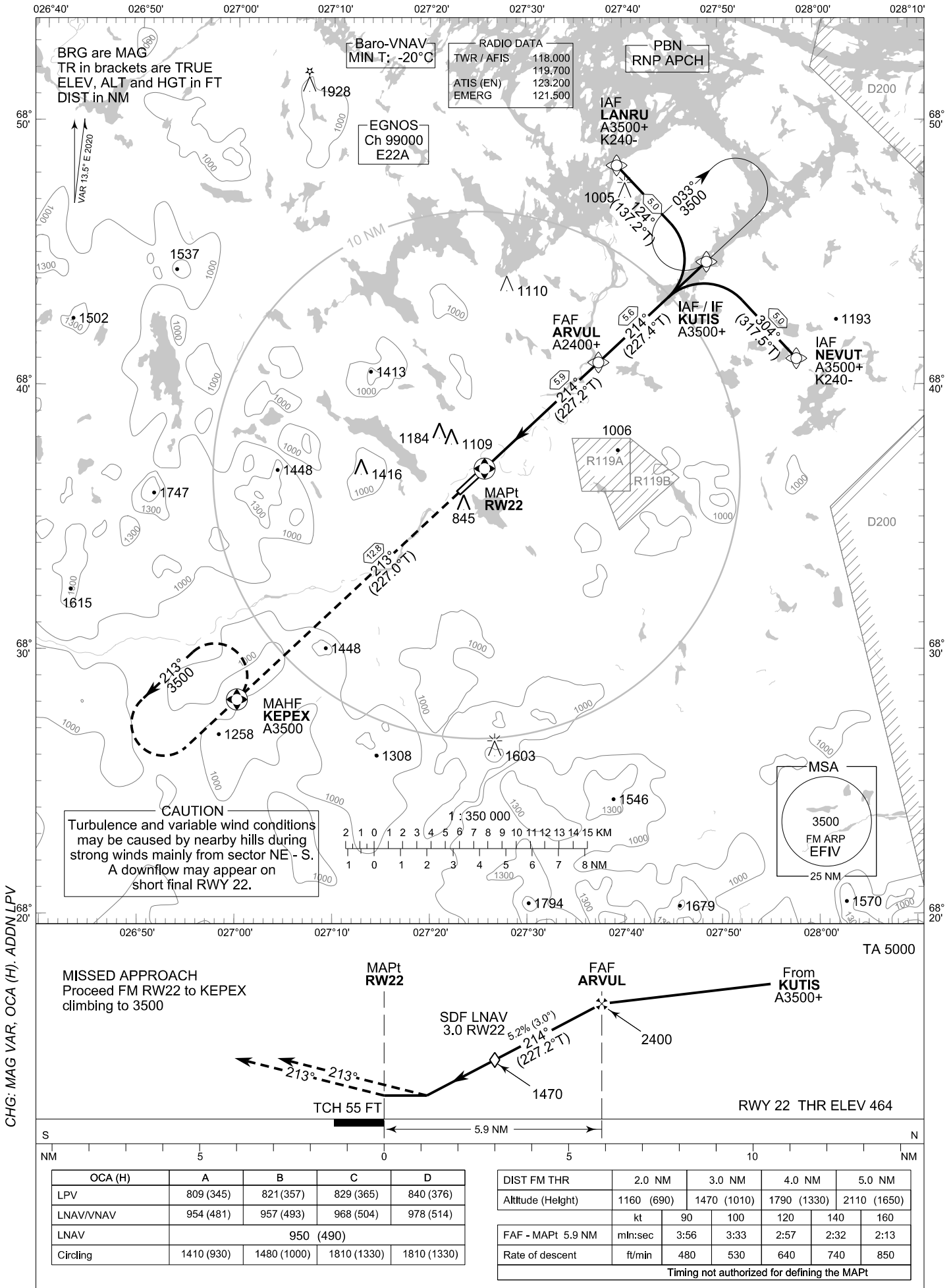


**INSTRUMENT  
APPROACH CHART - ICAO**

ELEV 482 FT  
HEIGHTS RELATED TO  
THR RWY 22 ELEV 464 FT

**RNP RWY 22  
IVALO AERODROME  
IVALO, FINLAND**



**CAUTION**  
Turbulence and variable wind conditions may be caused by nearby hills during strong winds mainly from sector NE - S. A downflow may appear on short final RWY 22.

**MISSED APPROACH**  
Proceed FM RW22 to KEPEX climbing to 3500

OCA (H)	A	B	C	D
LPV	809 (345)	821 (357)	829 (365)	840 (376)
LNAV/VNAV	954 (481)	957 (493)	968 (504)	978 (514)
LNAV	950 (490)			
Circling	1410 (930)	1480 (1000)	1810 (1330)	1810 (1330)

DIST FM THR	2.0 NM	3.0 NM	4.0 NM	5.0 NM		
Altitude (Height)	1160 (690)	1470 (1010)	1790 (1330)	2110 (1650)		
	kt	90	100	120	140	160
FAF - MAPt 5.9 NM	min:sec	3:56	3:33	2:57	2:32	2:13
Rate of descent	ft/min	480	530	640	740	850

Timing not authorized for defining the MAPt

EFIV RNP RWY 22										
PROC ID NAV SPEC	SEQ NR	P/T	WPT			MAG GEO TR	DIST NM	Turn Direction	Constraints	
			ID	Type	Flyover				LVL	Speed
H22 NEVUT RNP APCH	005	IF	NEVUT	IAF	-	304°	5.0	L	A3500+	K240-
	010	TF	KUTIS	IF	-	317.5°T 214°			A3500+	
	020	TF	ARVUL	FAF	-	227.4°T 214°	5.6	A2400+		
	030	TF	RW22	MAPt	Y	227.2°T 213°	5.9			
	040	TF	KEPEX	MAHF	Y	227.0°T	12.8		A3500	

EFIV RNP RWY 22										
PROC ID NAV SPEC	SEQ NR	P/T	WPT			MAG GEO TR	DIST NM	Turn Direction	Constraints	
			ID	Type	Flyover				LVL	Speed
H22 KUTIS RNP APCH	010	IF	KUTIS	IAF/IF	-	214°	5.6		A3500+	
	020	TF	ARVUL	FAF	-	227.4°T 214°			A2400+	
	030	TF	RW22	MAPt	Y	227.2°T 213°	5.9			
	040	TF	KEPEX	MAHF	Y	227.0°T	12.8		A3500	

EFIV RNP RWY 22										
PROC ID NAV SPEC	SEQ NR	P/T	WPT			MAG GEO TR	DIST NM	Turn Direction	Constraints	
			ID	Type	Flyover				LVL	Speed
H22 LANRU RNP APCH	005	IF	LANRU	IAF	-	124°	5.0	R	A3500+	K240-
	010	TF	KUTIS	IF	-	137.2°T 214°			A3500+	
	020	TF	ARVUL	FAF	-	227.4°T 214°	5.6	A2400+		
	030	TF	RW22	MAPt	Y	227.2°T 213°	5.9			
	040	TF	KEPEX	MAHF	Y	227.0°T	12.8		A3500	

RNAV Holdings							
ID	INBD TR	INBD MAG	Turn Direction	Speed	MNM HLDG LVL	TIME	DIST NM
KUTIS	227.0°T	213°	Right	K230-	A3500	1 MIN	-
KEPEX	047.0°T	033°	Left	K230-	A3500	1 MIN	-

WPT COORD
SEE PAGE EFIV AD 2.15 - 1

FINAL APPROACH PARAMETERS			
LNAV Gradient	Baro-VNAV		TCH
	VPA	MNM T	
5.24 % (3.00°)	3.00°	-20°C	55 FT

SBAS DATA	
Approach ID	E22A
Service Provider	EGNOS
CRC remainder	1F 5B 5A E2
Channel number	99000
Data Block	SEE EFIV AD 2.15 - 9