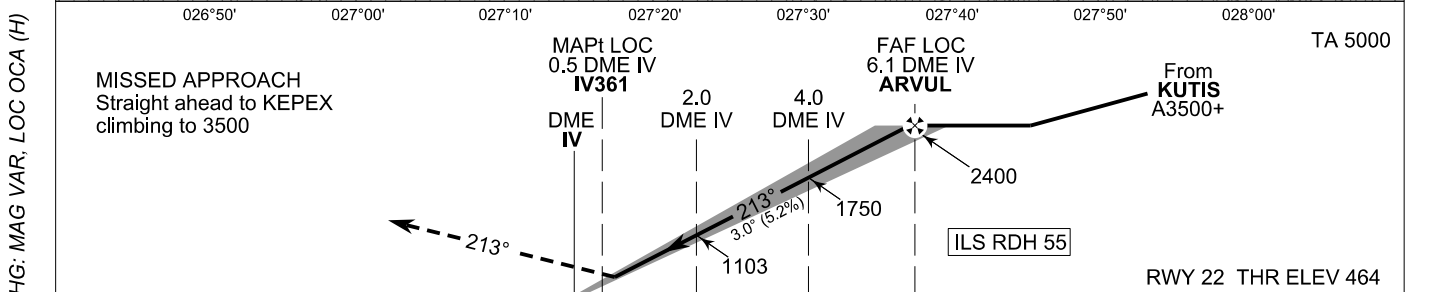
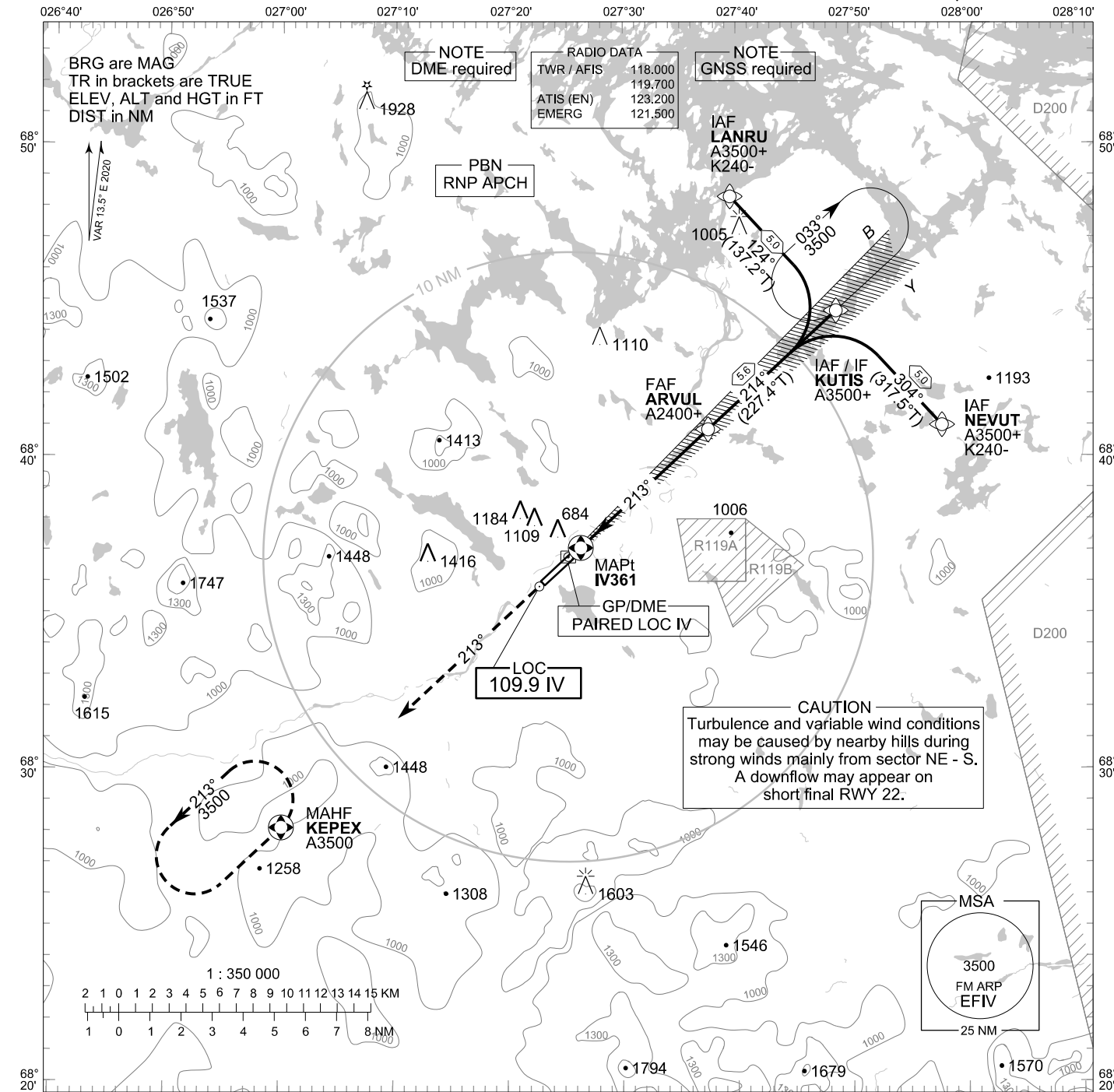


**INSTRUMENT
APPROACH CHART - ICAO**

ELEV 482 FT
HEIGHTS RELATED TO
THR RWY 22 ELEV 464 FT

**ILS Z or LOC Z RWY 22
IVALO AERODROME
IVALO, FINLAND**



S					N				
NM					NM				
5					5				
0					0				
5					5				
NM					NM				
OCA (H)					kt				
ILS CAT I					min:sec				
LOC					Rate of descent				
Circling					Timing not authorized for defining the MAPt				
A	B	C	D	90	100	120	140	160	
617 (153)	628 (164)	639 (175)	653 (189)	3:44	3:21	2:48	2:24	2:06	
930 (470)				480	530	640	740	850	
1410 (930)	1480 (1000)	1810 (1330)	1810 (1330)						

CHG: MAG VAR, LOC OCA (H)

EFIV ILS Z or LOC Z RWY 22										
PROC ID NAV SPEC	SEQ NR	P/T	WPT			MAG GEO TR	DIST NM	Turn Direction	Constraints	
			ID	Type	Flyover				LVL	Speed
I22 NEVUT RNP APCH	005	IF	NEVUT	IAF	-	304°	5.0	L	A3500+	K240-
	010	TF	KUTIS	IF	-	317.5°T 214°			A3500+	
	020	TF	ARVUL	FAF LOC	-	227.4°T	5.6		A2400+	
	030	TF	IV361	MAPt LOC	Y	213°	-			
	040	CA	-	-	-	226.5°T	-		A1500+	
	050	TF	KEPEX	MAHF	Y	-	-		A3500	

EFIV ILS Z or LOC Z RWY 22										
PROC ID NAV SPEC	SEQ NR	P/T	WPT			MAG GEO TR	DIST NM	Turn Direction	Constraints	
			ID	Type	Flyover				LVL	Speed
I22 KUTIS RNP APCH	010	IF	KUTIS	IAF/IF	-	214°	5.6		A3500+	
	020	TF	ARVUL	FAF LOC	-	227.4°T			A2400+	
	030	TF	IV361	MAPt LOC	Y	213°	-			
	040	CA	-	-	-	226.5°T	-		A1500+	
	050	TF	KEPEX	MAHF	Y	-	-		A3500	

EFIV ILS Z or LOC Z RWY 22										
PROC ID NAV SPEC	SEQ NR	P/T	WPT			MAG GEO TR	DIST NM	Turn Direction	Constraints	
			ID	Type	Flyover				LVL	Speed
I22 LANRU RNP APCH	005	IF	LANRU	IAF	-	124°	5.0	R	A3500+	K240-
	010	TF	KUTIS	IF	-	137.2°T 214°			A3500+	
	020	TF	ARVUL	FAF LOC	-	227.4°T	5.6		A2400+	
	030	TF	IV361	MAPt LOC	Y	213°	-			
	040	CA	-	-	-	226.5°T	-		A1500+	
	050	TF	KEPEX	MAHF	Y	-	-		A3500	

RNAV Holdings							
ID	INBD TR	INBD MAG	Turn Direction	Speed	MNM HLDG LVL	TIME	DIST NM
KUTIS	227.0°T	213°	Right	K230-	A3500	1 MIN	-
KEPEX	047.0°T	033°	Left	K230-	A3500	1 MIN	-

WPT COORD
SEE PAGE EFIV AD 2.15 - 1

FINAL APPROACH PARAMETERS			
LOC Gradient	ILS		RDH
	CAT	GPA	
5.24 % (3.00°)	I	3.00°	55 FT