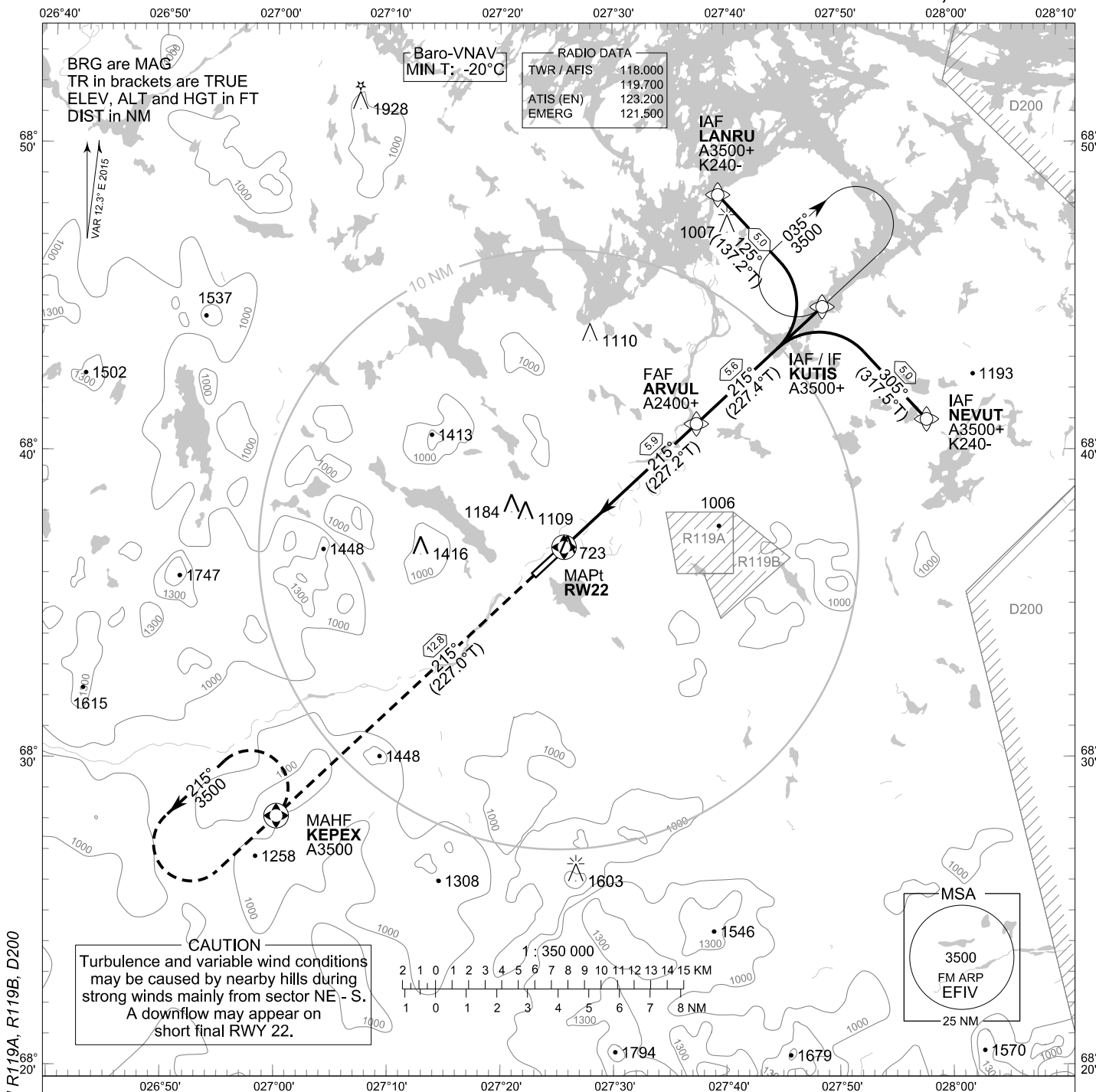


**INSTRUMENT
APPROACH CHART - ICAO**

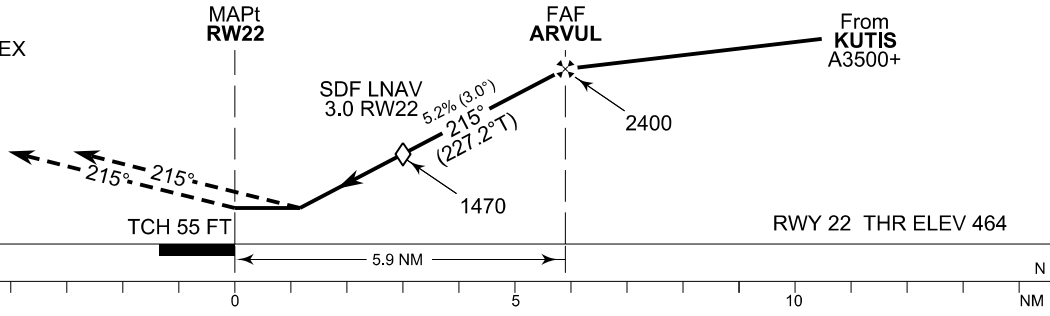
ELEV 482 FT
HEIGHTS RELATED TO
THR RWY 22 ELEV 464 FT

RNAV (GNSS) RWY 22
IVALO AERODROME
IVALO, FINLAND



CHG: DEL D117, R117, ADDN R119A, R119B, D200

MISSED APPROACH
Proceed FM RW22 to KEPEX
climbing to 3500



OCA (H)	A	B	C	D
LNAV		970 (510)		
LNAV/VNAV		870 (400)		
Circling	1410 (930)	1480 (1000)	1810 (1330)	1810 (1330)

DIST FM THR	2.0 NM	3.0 NM	4.0 NM	5.0 NM		
Altitude (Height)	1160 (690)	1470 (1010)	1790 (1330)	2110 (1650)		
	kt	90	100	120	140	160
FAF - MAPt 5.9 NM	min:sec	3:56	3:33	2:57	2:32	2:13
Rate of descent	ft/min	480	530	640	740	850

Timing not authorized for defining the MAPt

EFIV RNAV (GNSS) RWY 22										
PROC ID NAV SPEC	SEQ NR	P/T	WPT			MAG GEO TR	DIST NM	Turn Direction	Constraints	
			ID	Type	Flyover				LVL	Speed
R22 NEVUT RNP APCH	005	IF	NEVUT	IAF	-	305° 317.5°T	5.0	L	A3500+	K240-
	010	TF	KUTIS	IF	-	215° 227.4°T	5.6		A3500+	
	020	TF	ARVUL	FAF	-	215° 227.2°T	5.9		A2400+	
	030	TF	RW22	MAPt	Y	215° 227.0°T	12.8			
	040	TF	KEPEX	MAHF	Y				A3500	

EFIV RNAV (GNSS) RWY 22										
PROC ID NAV SPEC	SEQ NR	P/T	WPT			MAG GEO TR	DIST NM	Turn Direction	Constraints	
			ID	Type	Flyover				LVL	Speed
R22 KUTIS RNP APCH	010	IF	KUTIS	IAF/IF	-	215° 227.4°T	5.6		A3500+	
	020	TF	ARVUL	FAF	-	215° 227.2°T	5.9		A2400+	
	030	TF	RW22	MAPt	Y	215° 227.0°T	12.8			
	040	TF	KEPEX	MAHF	Y				A3500	

EFIV RNAV (GNSS) RWY 22										
PROC ID NAV SPEC	SEQ NR	P/T	WPT			MAG GEO TR	DIST NM	Turn Direction	Constraints	
			ID	Type	Flyover				LVL	Speed
R22 LANRU RNP APCH	005	IF	LANRU	IAF	-	125° 137.2°T	5.0	R	A3500+	K240-
	010	TF	KUTIS	IF	-	215° 227.4°T	5.6		A3500+	
	020	TF	ARVUL	FAF	-	215° 227.2°T	5.9		A2400+	
	030	TF	RW22	MAPt	Y	215° 227.0°T	12.8			
	040	TF	KEPEX	MAHF	Y				A3500	

RNAV Holdings							
ID	INBD TR	INBD MAG	Turn Direction	MAX IAS	MNM HLDG LVL	TIME	DIST NM
KUTIS	227.0°T	215°	Right	230 KT	A3500	1 MIN	-
KEPEX	047.0°T	035°	Left	230 KT	A3500	1 MIN	-

WPT COORD
SEE PAGE EFIV AD 2.15 - 1

FINAL APPROACH PARAMETERS			
LNAV Gradient	Baro-VNAV		TCH
	VPA	MNM T	
5.24 % (3.00°)	3.00°	-20°C	55 FT