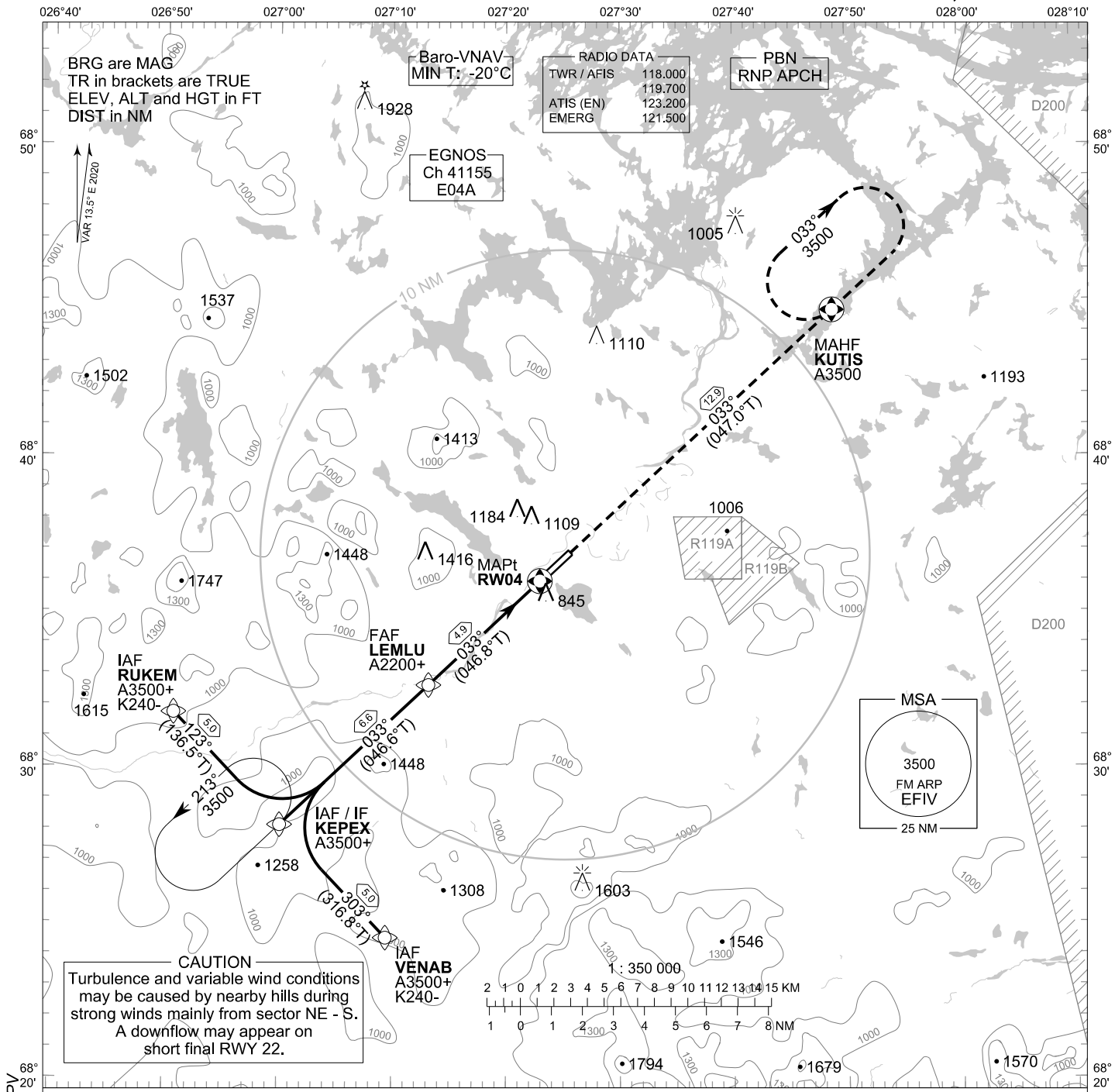


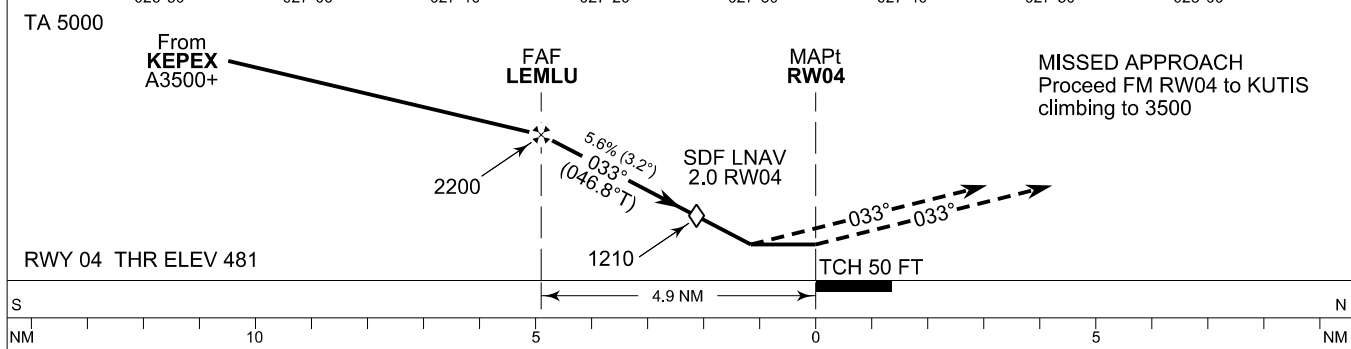
**INSTRUMENT
APPROACH CHART - ICAO**

ELEV 482 FT
HEIGHTS RELATED TO
THR RWY 04 ELEV 481 FT

RNP RWY 04
IVALO AERODROME
IVALO, FINLAND



CHG: MAG VAR, SDF, ADDN LPV



OCA (H)	A	B	C	D
LPV	809 (328)	821 (340)	829 (348)	840 (359)
LNAV/VNAV	954 (473)	967 (486)	975 (494)	985 (504)
LNAV	1030 (550)			
Circling	1410 (930)	1480 (1000)	1810 (1330)	1810 (1330)

DIST FM THR	4.0 NM	3.0 NM	2.0 NM			
Altitude (Height)	1890 (1410)	1550 (1070)	1210 (730)			
	kt	90	100	120	140	160
FAF - MAPt 4.9 NM	min:sec	3:17	2:57	2:27	2:06	1:51
Rate of descent	ft/mIn	510	570	680	790	910

Timing not authorized for defining the MAPt

EFIV RNP RWY 04										
PROC ID NAV SPEC	SEQ NR	P/T	WPT			MAG GEO TR	DIST NM	Turn Direction	Constraints	
			ID	Type	Flyover				LVL	Speed
H04 RUKEM RNP APCH	005	IF	RUKEM	IAF	-	123°	5.0	L	A3500+	K240-
	010	TF	KEPEX	IF	-	136.5°T			A3500+	
	020	TF	LEMLU	FAF	-	033°	6.6		A2200+	
	030	TF	RW04	MAPt	Y	046.6°T	4.9			
	040	TF	KUTIS	MAHF	Y	033°	12.9		A3500	

EFIV RNP RWY 04										
PROC ID NAV SPEC	SEQ NR	P/T	WPT			MAG GEO TR	DIST NM	Turn Direction	Constraints	
			ID	Type	Flyover				LVL	Speed
H04 KEPEX RNP APCH	010	IF	KEPEX	IAF/IF	-	033°	6.6		A3500+	
	020	TF	LEMLU	FAF	-	046.6°T			A2200+	
	030	TF	RW04	MAPt	Y	033°	4.9			
	040	TF	KUTIS	MAHF	Y	046.8°T	12.9		A3500	

EFIV RNP RWY 04										
PROC ID NAV SPEC	SEQ NR	P/T	WPT			MAG GEO TR	DIST NM	Turn Direction	Constraints	
			ID	Type	Flyover				LVL	Speed
H04 VENAB RNP APCH	005	IF	VENAB	IAF	-	303°	5.0	R	A3500+	K240-
	010	TF	KEPEX	IF	-	316.8°T			A3500+	
	020	TF	LEMLU	FAF	-	033°	6.6		A2200+	
	030	TF	RW04	MAPt	Y	046.6°T	4.9			
	040	TF	KUTIS	MAHF	Y	033°	12.9		A3500	

RNAV Holdings							
ID	INBD TR	INBD MAG	Turn Direction	Speed	MNM HLDG LVL	TIME	DIST NM
KEPEX	047.0°T	033°	Left	K230-	A3500	1 MIN	-
KUTIS	227.0°T	213°	Right	K230-	A3500	1 MIN	-

WPT COORD
SEE PAGE EFIV AD 2.15 - 1

FINAL APPROACH PARAMETERS			
LNAV Gradient	Baro-VNAV		TCH
	VPA	MNM T	
5.59 % (3.20°)	3.20°	-20°C	50 FT

SBAS DATA	
Approach ID	E04A
Service Provider	EGNOS
CRC remainder	F0 01 36 0B
Channel number	41155
Data Block	SEE EFIV AD 2.15 - 9