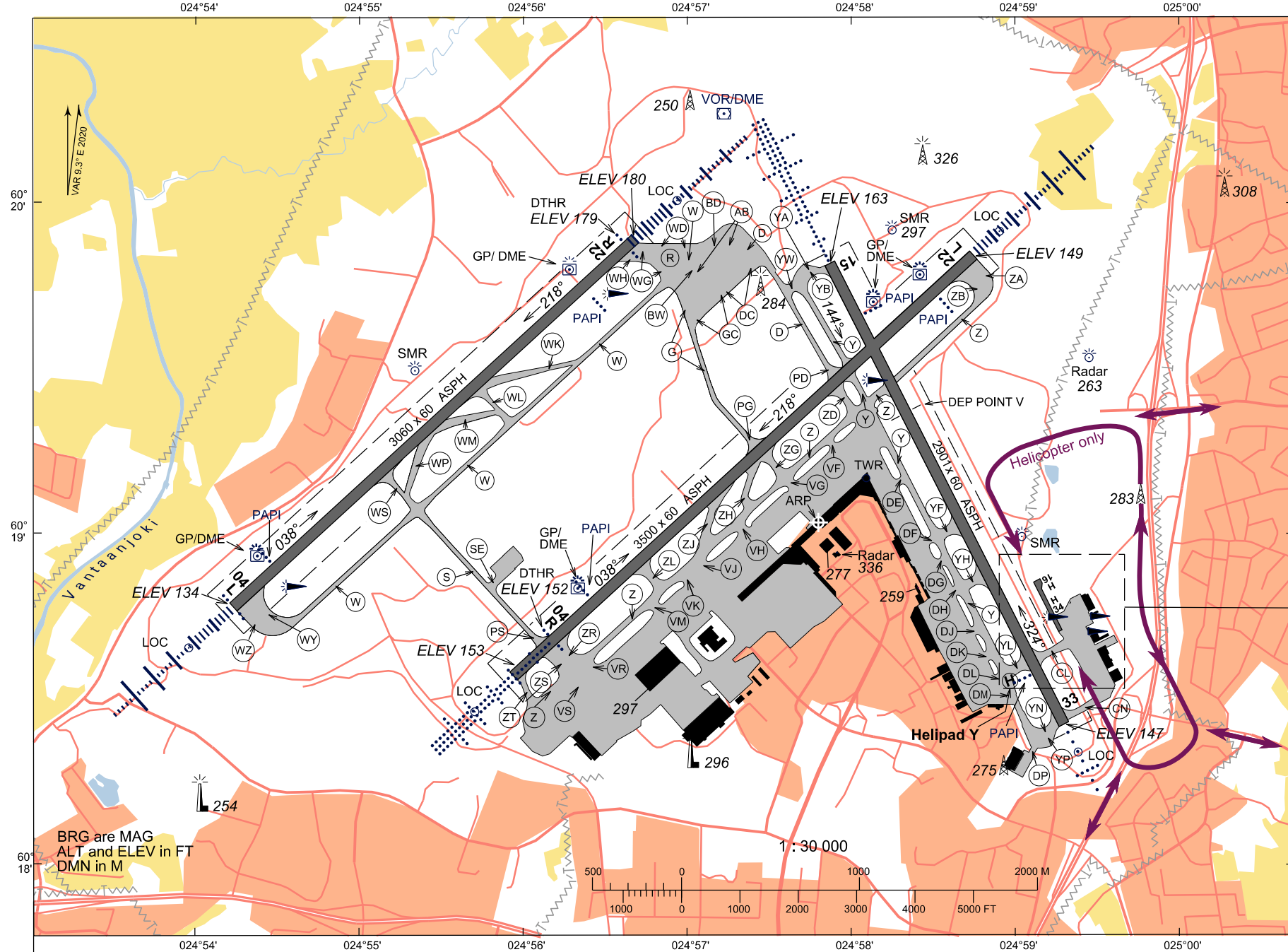


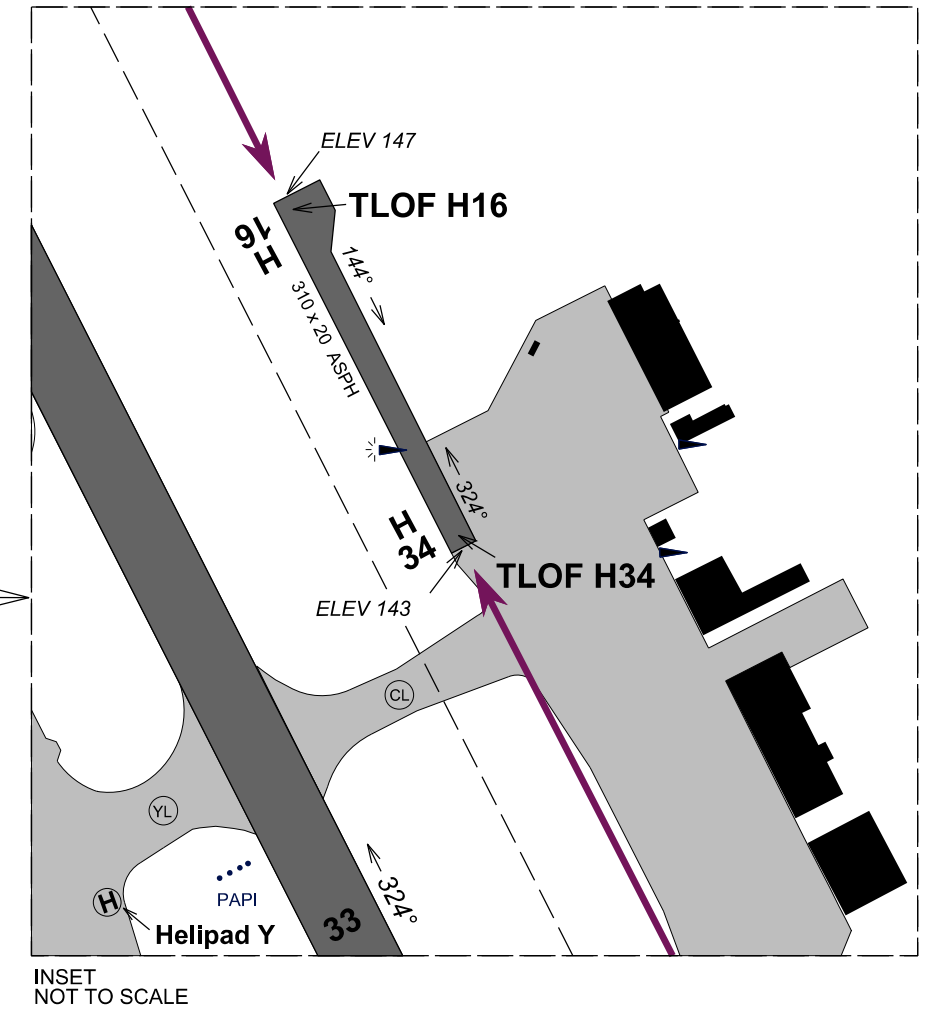
LANDING CHART

LAT 60 19 02 N
LONG 024 57 48 E

ELEV 180 FT



Final APCH and TKOF area (FATO)



Note 1.
For more accurate TWY information,
see charts AIP, EFHK AD 2.4 - 1, 2.4 - 3 (ADC),
2.5 - 1 (APDC).

CHG: APN 1S, 1W, Terminal T2