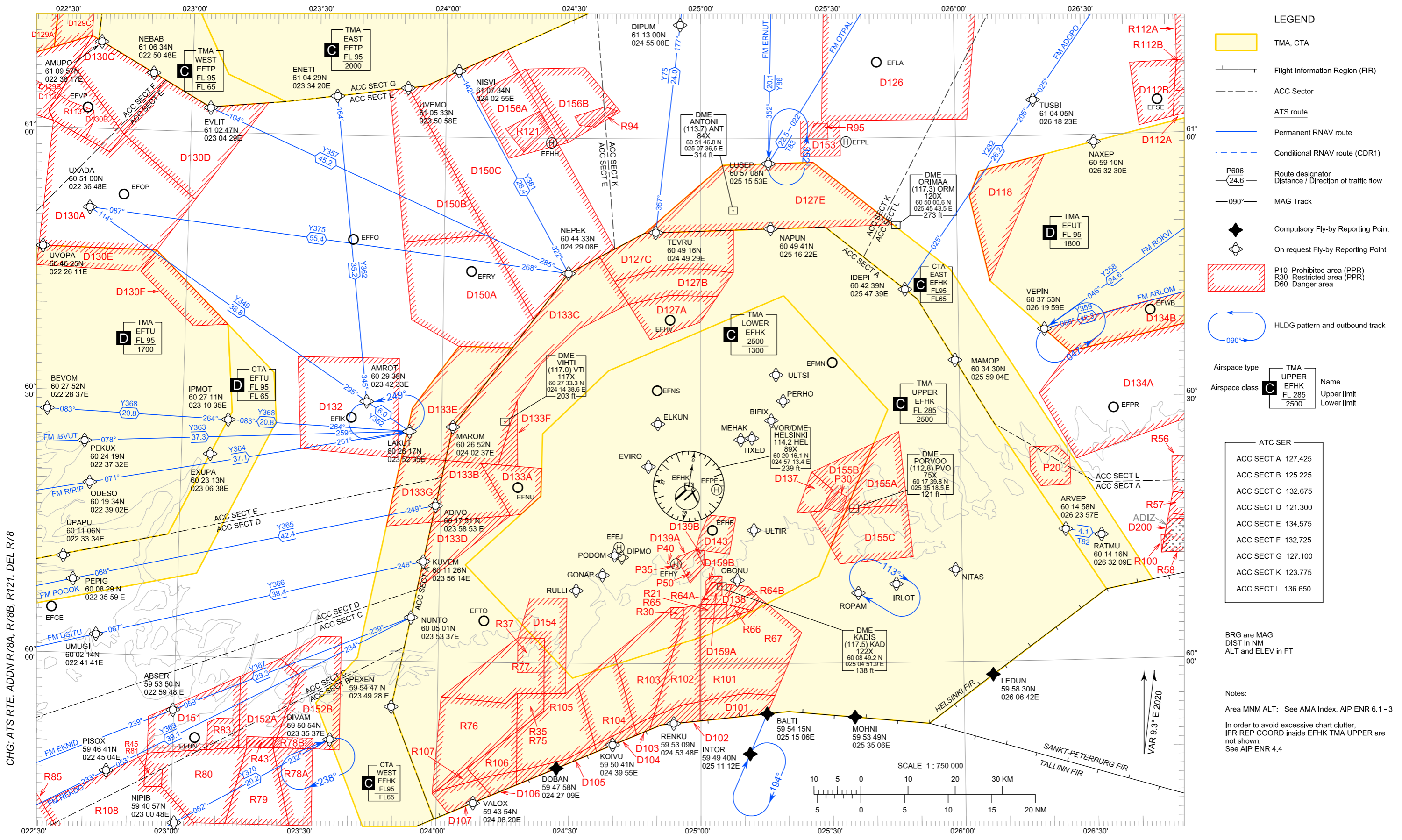


AREA CHART - ICAO

EFHK TMA



LEGEND

- TMA, CTA
- Flight Information Region (FIR)
- ACC Sector
- ATS route
- Permanent RNAV route
- Conditional RNAV route (CDR1)
- P606
24.6 — Route designator
Distance / Direction of traffic flow
- 090° — MAG Track
- ◆ Compulsory Fly-by Reporting Point
- ◊ On request Fly-by Reporting Point
- P10 Prohibited area (PPR)
- R30 Restricted area (PPR)
- D60 Danger area
- ↻ HLDG pattern and outbound track

Airspace type	TMA	Upper	Name	Upper limit	Lower limit
	UPPER				
	EFHK	FL 285			
		FL 2500			

ATC SER

ACC SECT A	127.425
ACC SECT B	125.225
ACC SECT C	132.675
ACC SECT D	121.300
ACC SECT E	134.575
ACC SECT F	132.725
ACC SECT G	127.100
ACC SECT K	123.775
ACC SECT L	136.650

BRG are MAG
DIST in NM
ALT and ELEV in FT

Notes:
Area MNM ALT: See AMA Index, AIP ENR 6.1 - 3
In order to avoid excessive chart clutter,
IFR REP COORD inside EFHK TMA UPPER are
not shown.
See AIP ENR 4.4

CHG: ATS RTE. ADDN R78A, R78B, R121. DEL R78