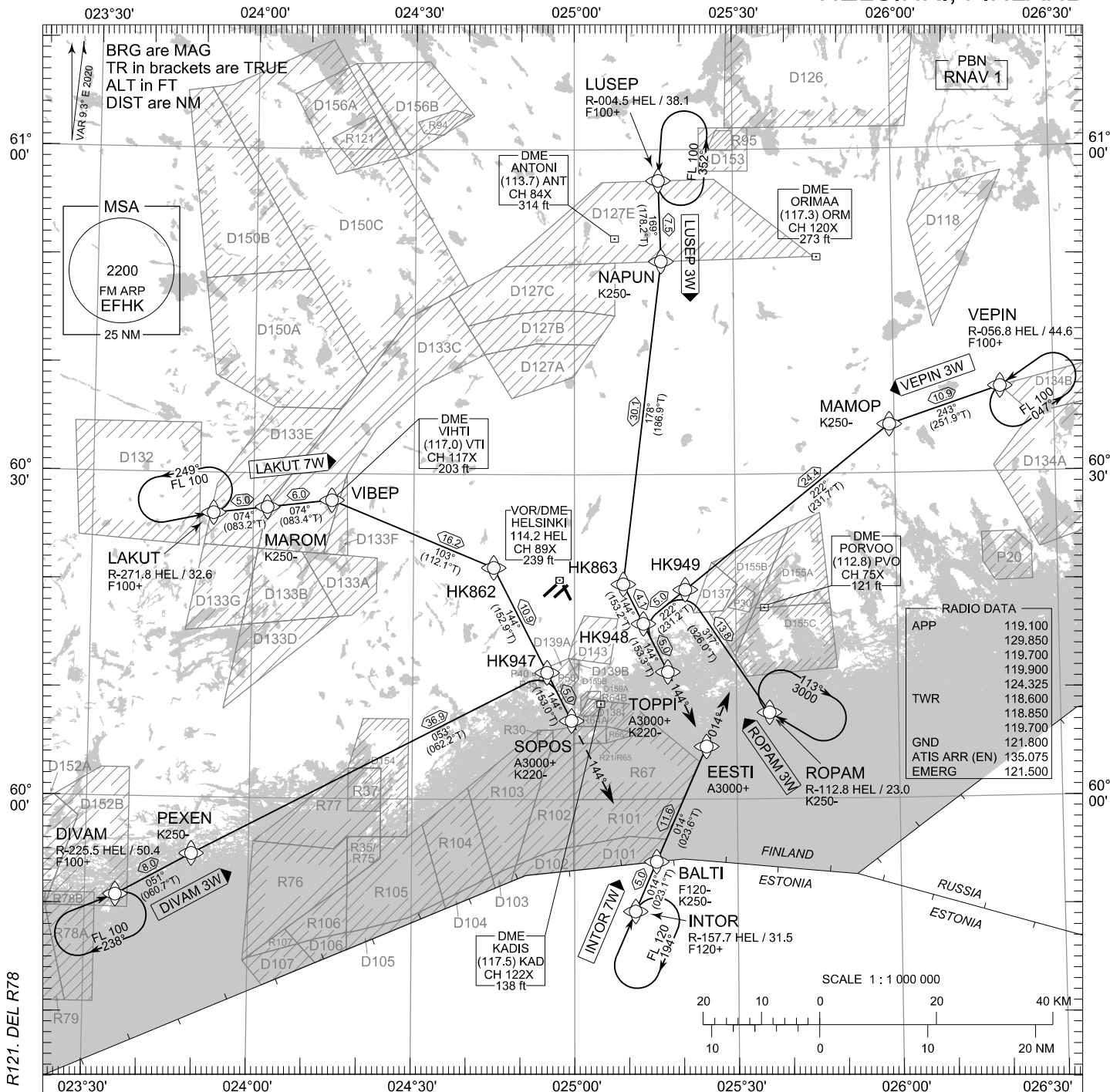


STANDARD ARRIVAL CHART
INSTRUMENT (STAR) - ICAO

TRANSITION ALT
5000

RNAV (DME/DME or GNSS) STAR RWY 33
HELSINKI-VANTAA AERODROME
HELSINKI, FINLAND



CHG: PBN. ADDN R78A, R78B, R121. DEL R78

RNAV STAR RWY 33
DIVAM 3W INTOR 7W LAKUT 7W LUSEP 3W ROPAM 3W VEPIN 3W

- DME/DME OPS: MORE THAN 2 DME INPUTS CANNOT BE GUARANTEED AT ALL TIMES.
- AREA MNM ALT: SEE AMA INDEX, AIP ENR 6.1 - 3
- ROUTES: RNAV PROC CODING ON THE VERSO OF THE CHART.

UNLESS OTHERWISE INSTRUCTED, STAR MUST BE FLOWN ACCORDING TO THE DEFINED WAYPOINT SEQUENCE UNTIL THE LAST WAYPOINT AND THEN CONTINUE ON THE DEFINED COURSE. ATC CLEARANCE TO INBOUND IS ALWAYS REQUIRED.

ATC WILL GIVE DESCENT CLEARANCES.
- WPT CONSTRAINTS: ALT / FL / SPEED CONSTRAINTS MUST ALWAYS BE FOLLOWED AS PUBLISHED UNLESS EXPLICITLY CANCELLED BY ATC.
- CD OPS: BY ATC CLR IF TFC PERMITS. PLAN CD PATH ACCORDING TO STAR FOLLOWED BY DCT INTERCEPT TO IAF OF THE ACKNOWLEDGED IAP OR AS ADVISED BY ATC.

- RCF: SELECT TRANSPONDER CODE 7600.
- RNAV STAR HAS BEEN GIVEN AND ACKNOWLEDGED:
FOLLOW THE STAR UNTIL THE LAST WAYPOINT AND PROCEED TO IAF. IF RADAR VECTORED, CONTINUE 2 MIN ON LAST ASSIGNED AND ACKNOWLEDGED HDG AND ALT/FL, THEN RESUME STAR UNTIL THE LAST WAYPOINT AND PROCEED TO IAF.
- RNAV STAR HAS NOT BEEN GIVEN AND ACKNOWLEDGED:
CONTINUE 2 MIN ON LAST ASSIGNED AND ACKNOWLEDGED HDG AND ALT/FL, THEN PROCEED TO IAF.
- FROM IAF EXECUTE IAP TO THE ACKNOWLEDGED RWY AND VACATE.
- AIRCRAFT HAVING TELEPHONE, CALL +358 9 6151 3324.

EFHK RNAV STAR RWY 33										
RTE NAV SPEC	SEQ NR	P/T	WPT		MAG	GEO TR	DIST NM	Turn Direction	Constraints	
			ID	Flyover					LVL	Speed
DIVAM 3W RNAV 1	010	IF	DIVAM	-	-	-	-		F100+	
	020	TF	PEXEN	-	051°	060.7°T	8.0			K250-
	030	TF	HK947	-	053°	062.2°T	36.9	R		
	040	TF	SOPOS	-	144°	153.0°T	5.0		A3000+	K220-
	050	FM	SOPOS	-	144°	153.0°T	-		A3000+	K220-

INTOR 7W RNAV 1	010	IF	INTOR	-	-	-	-		F120+	
	020	TF	BALTI	-	014°	023.1°T	5.0		F120-	K250-
	030	TF	EESTI	-	014°	023.6°T	11.6		A3000+	
	040	FM	EESTI	-	014°	023.6°T	-		A3000+	

LAKUT 7W RNAV 1	010	IF	LAKUT	-	-	-	-		F100+	
	020	TF	MAROM	-	074°	083.2°T	5.0			K250-
	030	TF	VIBEP	-	074°	083.4°T	6.0	R		
	040	TF	HK862	-	103°	112.1°T	16.2	R		
	050	TF	HK947	-	144°	152.9°T	10.9			
	060	TF	SOPOS	-	144°	153.0°T	5.0		A3000+	K220-
	070	FM	SOPOS	-	144°	153.0°T	-		A3000+	K220-

LUSEP 3W RNAV 1	010	IF	LUSEP	-	-	-	-		F100+	
	020	TF	NAPUN	-	169°	178.2°T	7.5			K250-
	030	TF	HK863	-	178°	186.9°T	30.1	L		
	040	TF	HK948	-	144°	153.2°T	4.1			
	050	TF	TOPPI	-	144°	153.3°T	5.0		A3000+	K220-
	060	FM	TOPPI	-	144°	153.3°T	-		A3000+	K220-

ROPAM 3W RNAV 1	010	IF	ROPAM	-	-	-	-			K250-
	020	TF	HK949	-	317°	326.0°T	13.8	L		
	030	TF	HK948	-	222°	231.2°T	5.0	L		
	040	TF	TOPPI	-	144°	153.3°T	5.0		A3000+	K220-
	050	FM	TOPPI	-	144°	153.3°T	-		A3000+	K220-

VEPIN 3W RNAV 1	010	IF	VEPIN	-	-	-	-		F100+	
	020	TF	MAMOP	-	243°	251.9°T	10.9			K250-
	030	TF	HK949	-	222°	231.7°T	24.4			
	040	TF	HK948	-	222°	231.2°T	5.0	L		
	050	TF	TOPPI	-	144°	153.3°T	5.0		A3000+	K220-
	060	FM	TOPPI	-	144°	153.3°T	-		A3000+	K220-

RNAV Holdings							
ID	INBD TR	INBD MAG	Turn Direction	MAX IAS	MNM HLDG LVL	TIME	DIST NM
DIVAM	067.4°T	058°	Right	230 KT	F100	1 MIN	-
INTOR	023.1°T	014°	Right	230 KT	F120	1 MIN	-
LAKUT	077.9°T	069°	Left	230 KT	F100	1 MIN	-
LUSEP	181.3°T	172°	Left	230 KT	F100	1 MIN	-
ROPAM	302.0°T	293°	Right	230 KT	A3000	1 MIN	-
VEPIN	236.1°T	227°	Left	230 KT	F100	1 MIN	-

WPT COORD
SEE PAGE EFHK AD 2.15 - 1