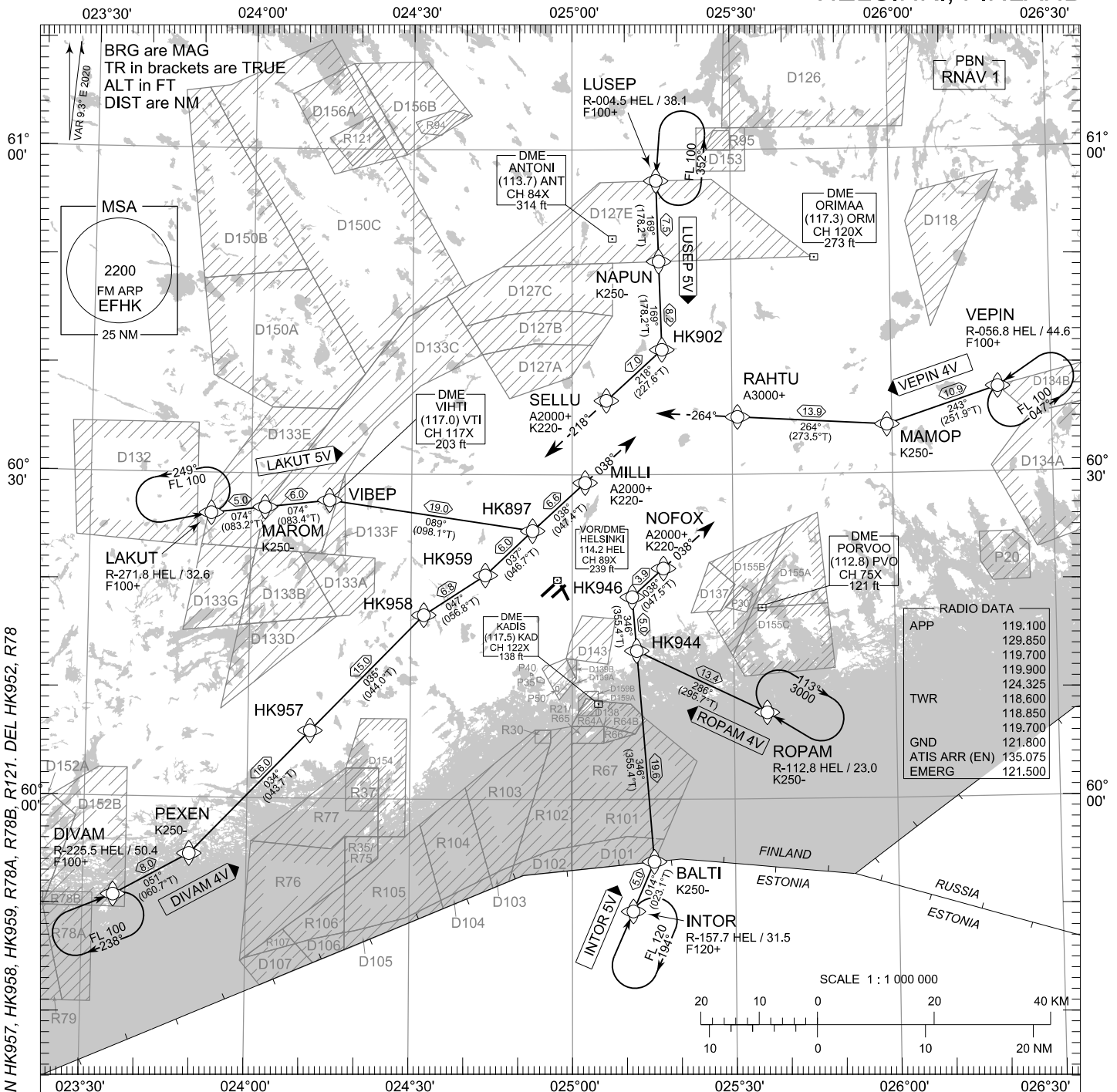


STANDARD ARRIVAL CHART  
INSTRUMENT (STAR) - ICAO

TRANSITION ALT  
5000

RNAV (DME/DME or GNSS) STAR RWY 22R 1/2  
HELSINKI-VANTAA AERODROME  
HELSINKI, FINLAND



RADIO DATA	
APP	119.100
	129.850
	119.700
	119.900
	124.325
TWR	118.600
	118.850
	119.700
GND	121.800
ATIS ARR (EN)	135.075
EMERG	121.500

**RNAV STAR RWY 22R 1/2**  
DIVAM 4V INTOR 5V LAKUT 5V LUSEP 5V ROPAM 4V VEPIN 4V

- DME/DME OPS:** MORE THAN 2 DME INPUTS CANNOT BE GUARANTEED AT ALL TIMES.
- AREA MNM ALT:** SEE AMA INDEX, AIP ENR 6.1 - 3
- ROUTES:** RNAV PROC CODING ON THE VERSO OF THE CHART.  
  
UNLESS OTHERWISE INSTRUCTED, STAR MUST BE FLOWN ACCORDING TO THE DEFINED WAYPOINT SEQUENCE UNTIL THE LAST WAYPOINT AND THEN CONTINUE ON THE DEFINED COURSE. ATC CLEARANCE TO INBOUND IS ALWAYS REQUIRED.  
  
ATC WILL GIVE DESCENT CLEARANCES.
- WPT CONSTRAINTS:** ALT / FL / SPEED CONSTRAINTS MUST ALWAYS BE FOLLOWED AS PUBLISHED UNLESS EXPLICITLY CANCELLED BY ATC.
- CD OPS:** BY ATC CLR IF TFC PERMITS. PLAN CD PATH ACCORDING TO STAR FOLLOWED BY DCT INTERCEPT TO IAF OF THE ACKNOWLEDGED IAP OR AS ADVISED BY ATC.

- RCF:** SELECT TRANSPONDER CODE 7600.
- RNAV STAR HAS BEEN GIVEN AND ACKNOWLEDGED:  
FOLLOW THE STAR UNTIL THE LAST WAYPOINT AND PROCEED TO IAF. IF RADAR VECTORED, CONTINUE 2 MIN ON LAST ASSIGNED AND ACKNOWLEDGED HDG AND ALT/FL, THEN RESUME STAR UNTIL THE LAST WAYPOINT AND PROCEED TO IAF.
- RNAV STAR HAS NOT BEEN GIVEN AND ACKNOWLEDGED:  
CONTINUE 2 MIN ON LAST ASSIGNED AND ACKNOWLEDGED HDG AND ALT/FL, THEN PROCEED TO IAF.
- FROM IAF EXECUTE IAP TO THE ACKNOWLEDGED RWY AND VACATE.
- AIRCRAFT HAVING TELEPHONE, CALL +358 9 6151 3324.

CHG: PBN, SELLU speed. ADDN HK957, HK958, HK959, R78A, R78B, R78C, R78D, R78E, R78F, R78G, R78H, R78I, R78J, R78K, R78L, R78M, R78N, R78O, R78P, R78Q, R78R, R78S, R78T, R78U, R78V, R78W, R78X, R78Y, R78Z, R79, R79A, R79B, R79C, R79D, R79E, R79F, R79G, R79H, R79I, R79J, R79K, R79L, R79M, R79N, R79O, R79P, R79Q, R79R, R79S, R79T, R79U, R79V, R79W, R79X, R79Y, R79Z

EFHK RNAV STAR RWY 22R 1/2										
RTE NAV SPEC	SEQ NR	P/T	WPT		MAG	GEO TR	DIST NM	Turn Direction	Constraints	
			ID	Flyover					LVL	Speed
DIVAM 4V RNAV 1	010	IF	DIVAM	-	-	-	-		F100+	
	020	TF	PEXEN	-	051°	060.7°T	8.0			K250-
	030	TF	HK957	-	034°	043.7°T	16.0			
	040	TF	HK958	-	035°	044.0°T	15.0			
	050	TF	HK959	-	047°	056.8°T	6.8			
	060	TF	HK897	-	037°	046.7°T	6.0			
	070	TF	MILLI	-	038°	047.4°T	6.6		A2000+	K220-
	080	FM	MILLI	-	038°	047.4°T	-		A2000+	K220-

INTOR 5V RNAV 1	010	IF	INTOR	-	-	-	-		F120+	
	020	TF	BALTI	-	014°	023.1°T	5.0			K250-
	030	TF	HK944	-	346°	355.4°T	19.6			
	040	TF	HK946	-	346°	355.4°T	5.0	R		
	050	TF	NOFOX	-	038°	047.5°T	3.9		A2000+	K220-
	060	FM	NOFOX	-	038°	047.5°T	-		A2000+	K220-

LAKUT 5V RNAV 1	010	IF	LAKUT	-	-	-	-		F100+	
	020	TF	MAROM	-	074°	083.2°T	5.0			K250-
	030	TF	VIBEP	-	074°	083.4°T	6.0			
	040	TF	HK897	-	089°	098.1°T	19.0	L		
	050	TF	MILLI	-	038°	047.4°T	6.6		A2000+	K220-
	060	FM	MILLI	-	038°	047.4°T	-		A2000+	K220-

LUSEP 5V RNAV 1	010	IF	LUSEP	-	-	-	-		F100+	
	020	TF	NAPUN	-	169°	178.2°T	7.5			K250-
	030	TF	HK902	-	169°	178.2°T	8.2	R		
	040	TF	SELLU	-	218°	227.6°T	7.0		A2000+	K220-
	050	FM	SELLU	-	218°	227.6°T	-		A2000+	K220-

ROPAM 4V RNAV 1	010	IF	ROPAM	-	-	-	-			K250-
	020	TF	HK944	-	286°	295.7°T	13.4	R		
	030	TF	HK946	-	346°	355.4°T	5.0	R		
	040	TF	NOFOX	-	038°	047.5°T	3.9		A2000+	K220-
	050	FM	NOFOX	-	038°	047.5°T	-		A2000+	K220-

VEPIN 4V RNAV 1	010	IF	VEPIN	-	-	-	-		F100+	
	020	TF	MAMOP	-	243°	251.9°T	10.9			K250-
	030	TF	RAHTU	-	264°	273.5°T	13.9		A3000+	
	040	FM	RAHTU	-	264°	273.5°T	-		A3000+	

RNAV Holdings								
ID	INBD TR	INBD MAG	Turn Direction	MAX IAS	MNM HLDG LVL	TIME	DIST NM	
DIVAM	067.4°T	058°	Right	230 KT	F100	1 MIN	-	
INTOR	023.1°T	014°	Right	230 KT	F120	1 MIN	-	
LAKUT	077.9°T	069°	Left	230 KT	F100	1 MIN	-	
LUSEP	181.3°T	172°	Left	230 KT	F100	1 MIN	-	
ROPAM	302.0°T	293°	Right	230 KT	A3000	1 MIN	-	
VEPIN	236.1°T	227°	Left	230 KT	F100	1 MIN	-	

WPT COORD
SEE PAGE EFHK AD 2.15 - 1