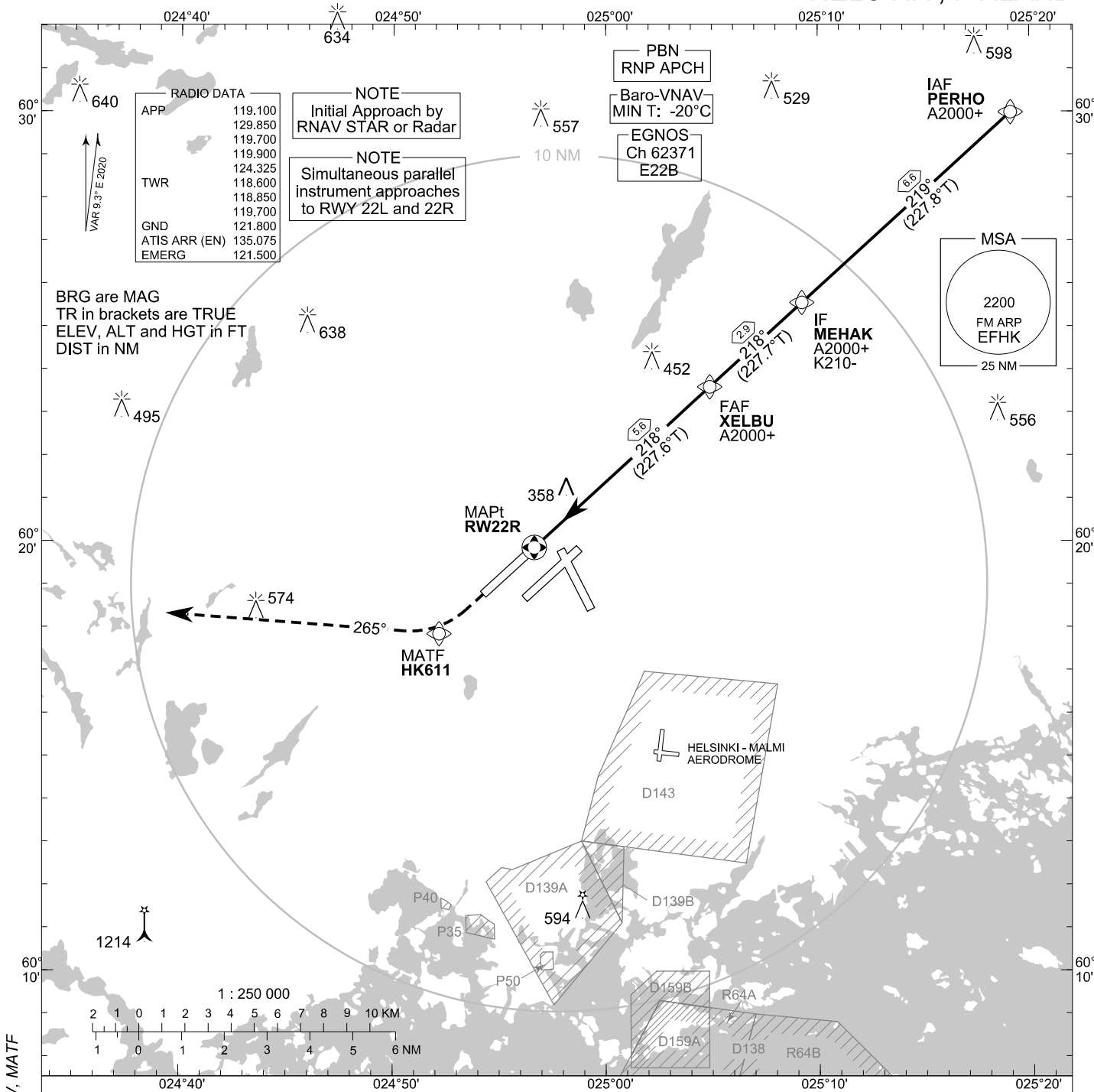


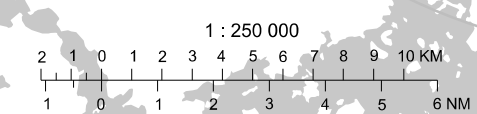
**INSTRUMENT  
APPROACH CHART - ICAO**

ELEV 180 FT  
HEIGHTS RELATED TO  
AERODROME ELEV

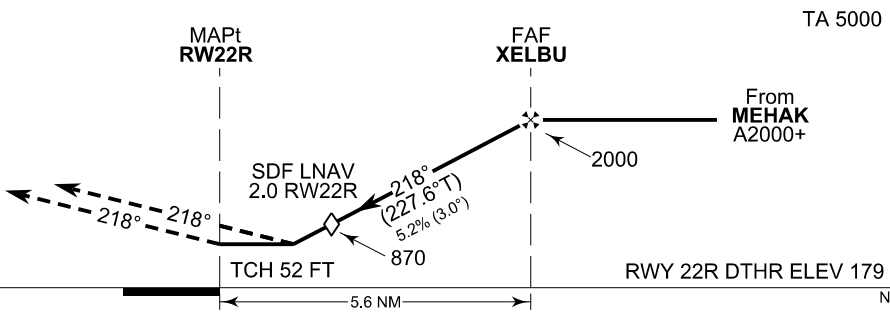
RNP RWY 22R  
HELSINKI-VANTAA AERODROME  
HELSINKI, FINLAND



CHG: ADDN LPV, LNAV/VNAV, MATF



**MISSED APPROACH**  
Proceed FM RW22R towards HK611 for right turn to track 265° climbing to 2000. Expect radar vectoring.



	NM					
	10	5	0	5	10	NM
OCA (H)	A	B	C	D		
LPV	412 (233)	425 (246)	433 (254)	491 (312)		
LNAV/VNAV	458 (279)	471 (292)	479 (300)	489 (310)		
LNAV	610 (430)					
DIST FM THR	2.0 NM	3.0 NM	4.0 NM	5.0 NM		
Altitude (Height)	870 (690)	1190 (1010)	1500 (1320)	1820 (1640)		
	kt	90	100	120	140	160
FAF - MAPt 5.6 NM	min:sec	3:42	3:20	2:47	2:23	2:05
Rate of descent	ft/min	480	530	640	740	850

Timing not authorized for defining the MAPt

EFHK RNP RWY 22R										
PROC ID NAV SPEC	SEQ NR	P/T	WPT			MAG GEO TR	DIST NM	Turn Direction	Constraints	
			ID	Type	Flyover				LVL	Speed
H22R PERHO RNP APCH	005	IF	PERHO	IAF	-	219°	6.6		A2000+	
	010	TF	MEHAK	IF	-	227.8°T			A2000+	K210-
	020	TF	XELBU	FAF	-	218°	5.6		A2000+	
	030	TF	RW22R	MAPt	Y	227.7°T				
	040	TF	HK611	MATF	-	218°	-			
	050	CA	-	-	-	227.6°T				
							R	A2000		

**WPT COORD**

SEE PAGE EFHK AD 2.15 - 1

**FINAL APPROACH PARAMETERS**

LNAV Gradient	Baro-VNAV		TCH
	VPA	MNM T	
5.24 % (3.00°)	3.00°	-20°C	52 FT

**SBAS DATA**

<b>Approach ID</b>	E22B
<b>Service Provider</b>	EGNOS
<b>CRC remainder</b>	DA C3 35 5B
<b>Channel number</b>	62371
<b>Data Block</b>	SEE EFHK AD 2.15 - 17