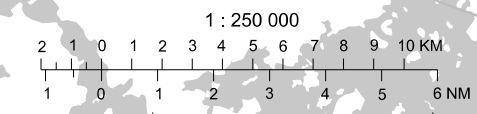
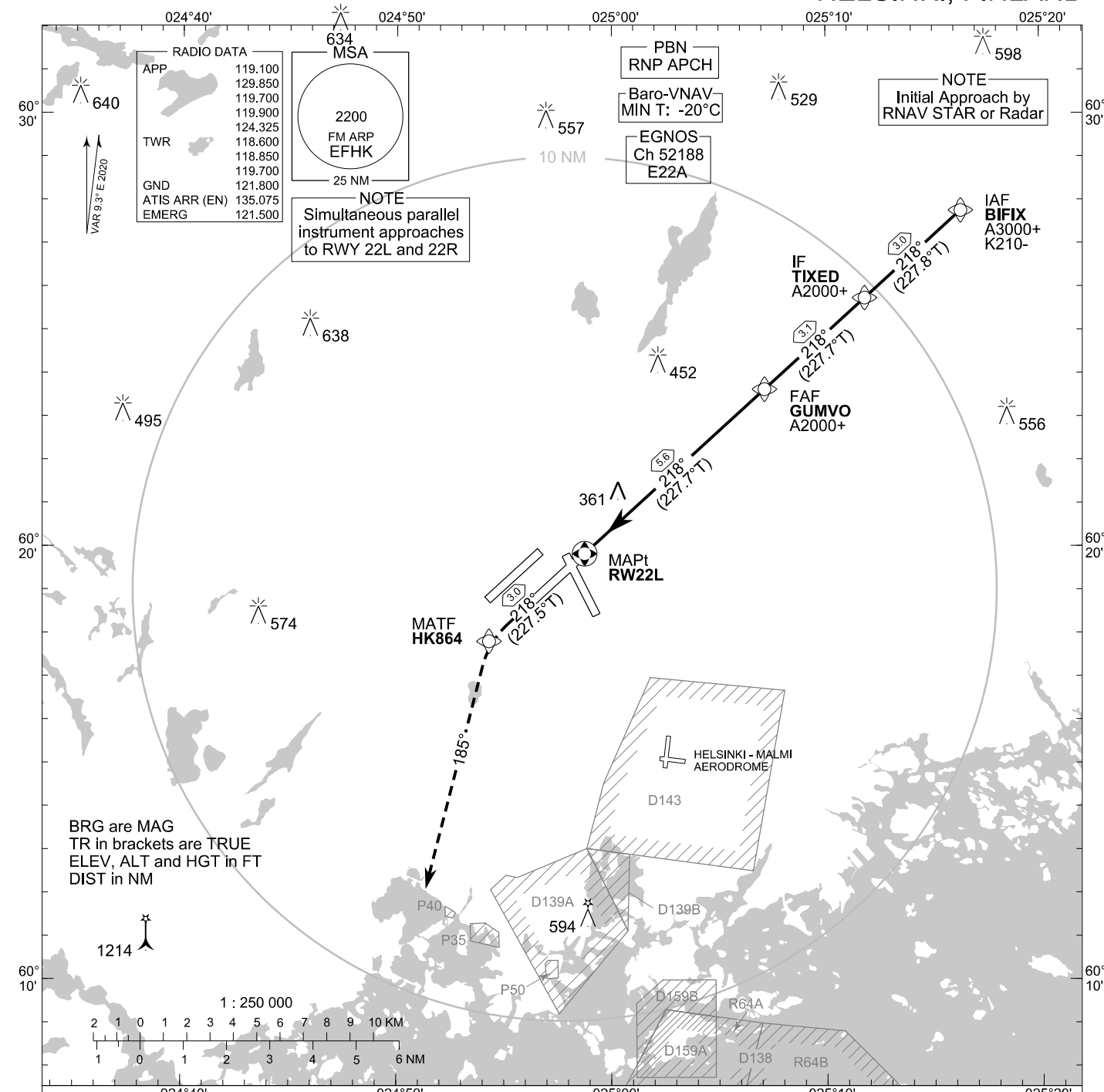


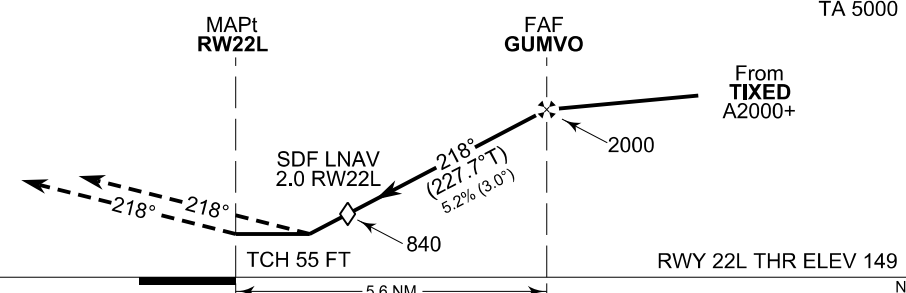
**INSTRUMENT
APPROACH CHART - ICAO**

ELEV 180 FT
HEIGHTS RELATED TO
THR RWY 22L ELEV 149 FT

RNP RWY 22L
HELSINKI-VANTAA AERODROME
HELSINKI, FINLAND



MISSED APPROACH
Proceed FM RW22L towards HK864 for left turn to track 185° climbing to 2000.
Expect radar vectoring.



OCA (H)	A	B	C	D
LPV	427 (279)	439 (291)	448 (300)	460 (312)
LNAV/VNAV	462 (314)	474 (326)	482 (334)	493 (345)
LNAV	610 (460)			

DIST FM THR	2.0 NM	3.0 NM	4.0 NM	5.0 NM		
Altitude (Height)	840 (690)	1160 (1010)	1480 (1330)	1800 (1650)		
	kt	90	100	120	140	160
FAF - MAPt 5.6 NM	min:sec	3:46	3:23	2:49	2:25	2:07
Rate of descent	ft/min	480	530	640	740	850

Timing not authorized for defining the MAPt

CHG: ADDN LPV, LNAV/VNAV

EFHK RNP RWY 22L										
PROC ID NAV SPEC	SEQ NR	P/T	WPT			MAG GEO TR	DIST NM	Turn Direction	Constraints	
			ID	Type	Flyover				LVL	Speed
H22L BIFIX RNP APCH	005	IF	BIFIX	IAF	-	218°	3.0		A3000+	K210
	010	TF	TIXED	IF	-	227.8°T			A2000+	
	020	TF	GUMVO	FAF	-	218°	5.6		A2000+	
	030	TF	RW22L	MAPt	Y	227.7°T				
	040	TF	HK864	MATF	-	218°	-	L		
	050	CA	-	-	-	227.5°T			A2000	

WPT COORD

SEE PAGE EFHK AD 2.15 - 1

FINAL APPROACH PARAMETERS

LNAV Gradient	Baro-VNAV		TCH
	VPA	MNM T	
5.24 % (3.00°)	3.00°	-20°C	55 FT

SBAS DATA

Approach ID	E22A
Service Provider	EGNOS
CRC remainder	DB 7A D2 DE
Channel number	52188
Data Block	SEE EFHK AD 2.15 - 17