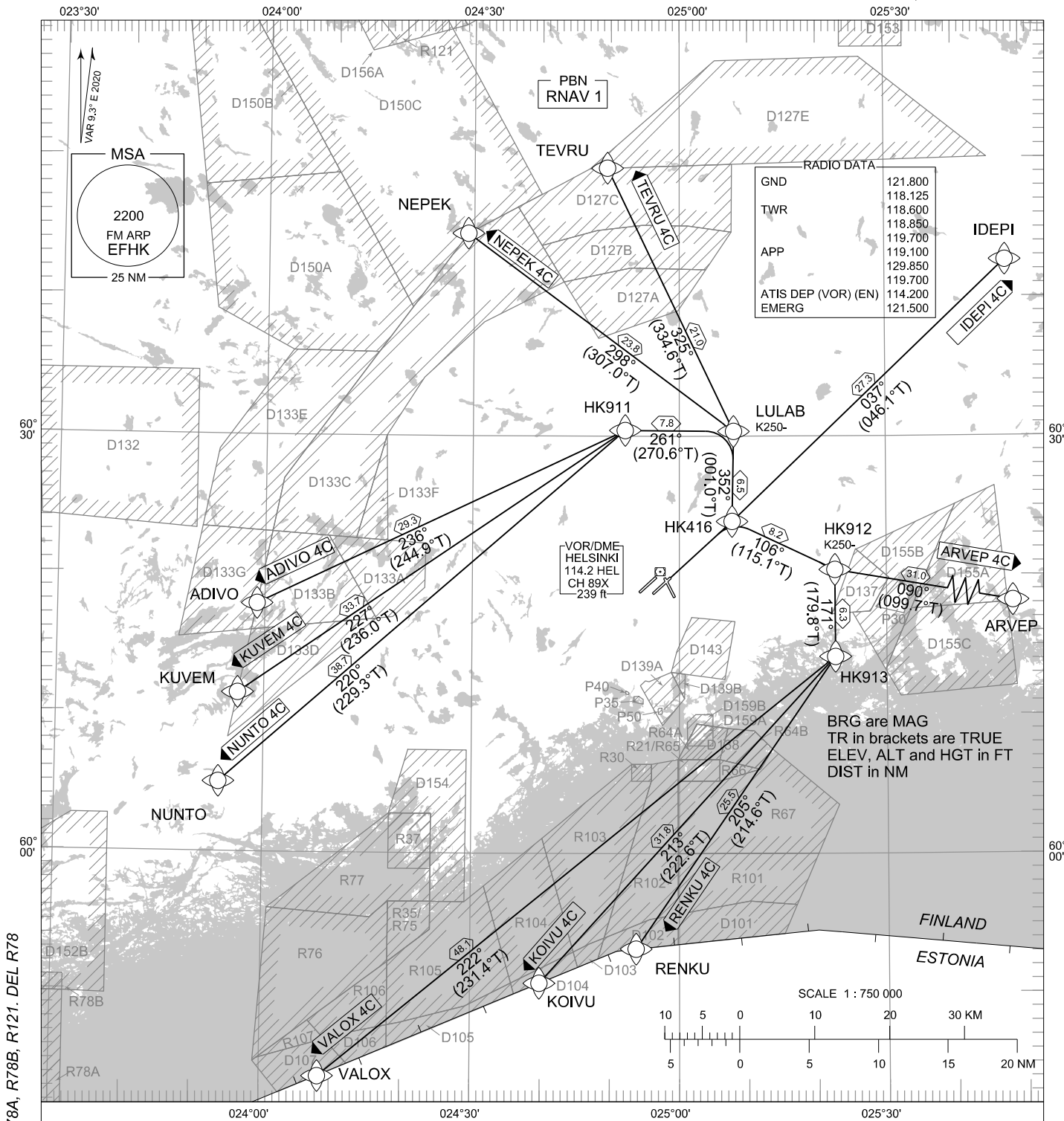


STANDARD DEPARTURE CHART
INSTRUMENT (SID) - ICAO

TRANSITION ALT
5000

RNAV (GNSS) SID RWY 04R
HELSINKI-VANTAA AERODROME
HELSINKI, FINLAND



CHG: PBN. ADDN R78A, R78B, R121. DEL R78

RNAV SID RWY 04R

ADIVO 4C ARVEP 4C IDEPI 4C KOIVU 4C KUVEM 4C NEPEK 4C NUNTO 4C RENKU 4C TEVRU 4C VALOX 4C

DME/DME OPS:	NOT SUPPORTED	CLIMB ALTITUDE:	CLIMB TO 4000 FT OR ASSIGNED ALTITUDE IF LOWER. CLIMB TO A HIGHER LEVEL ONLY WHEN CLEARED BY ATC.
ROUTES:	RNAV PROC CODING ON THE VERSO OF THE CHART	RADIO CONTACT:	MAINTAIN TWR FREQ UNTIL 1500 FT, THEN CONTACT HELSINKI RADAR FREQ ACCORDING TO RTE.
SQUAWK:	WHEN LINING UP SQUAWK THE ASSIGNED CODE	RNAV RTE	HELSINKI RADAR 119.100
ADDITIONS TO SID:	INSTRUCTIONS CONTAINING DEVIATIONS FROM THE SID (TEMPORARY ALTITUDE RESTRICTIONS ETC) MAY BE INCLUDED IN THE ATC CLEARANCE PRIOR TO TAKE-OFF.	RNAV RTE	ADIVO 4C, KUVEM 4C, NEPEK 4C, NUNTO 4C, TEVRU 4C
INITIAL CLIMB:	MNM TURNING ALTITUDE ACCORDING TO RTE CODING. PDG 5.0 % (304 FT/NM) UNTIL 4000 FT BASED ON AIRSPACE RESTRICTIONS. CLOSE-IN OBSTACLES EXIST.	NOISE ABATEMENT:	AFTER TAKE-OFF CLIMB AS RAPIDLY AS PRACTICABLE TO AT LEAST 2000 FT ABOVE AD ELEV.
		AREA MNM ALT:	SEE AMA INDEX, AIP ENR 6.1 - 3

EFHK RNAV SID RWY 04R										
RTE NAV SPEC	SEQ NR	P/T	WPT		MAG	GEO TR	DIST NM	Turn Direction	Constraints	
			ID	Flyover					LVL	Speed
ADIVO 4C RNAV 1	010	CA	-	-	038°	047.3°T	-		A680+	
	020	DF	HK416	-	-	-	-			
	030	TF	LULAB	-	352°	001.0°T	6.5	L		K250-
	040	TF	HK911	-	261°	270.6°T	7.8			
	050	TF	ADIVO	-	236°	244.9°T	29.3			
ARVEP 4C RNAV 1	010	CA	-	-	038°	047.3°T	-		A680+	
	020	DF	HK416	-	-	-	-			
	030	TF	HK912	-	106°	115.1°T	8.2			K250-
	040	TF	ARVEP	-	090°	099.7°T	31.0			
IDEPI 4C RNAV 1	010	CA	-	-	038°	047.3°T	-		A680+	
	020	DF	HK416	-	-	-	-			
	030	TF	IDEPI	-	037°	046.1°T	27.3			
KOIVU 4C RNAV 1	010	CA	-	-	038°	047.3°T	-		A680+	
	020	DF	HK416	-	-	-	-			
	030	TF	HK912	-	106°	115.1°T	8.2	R		K250-
	040	TF	HK913	-	171°	179.8°T	6.3	R		
	050	TF	KOIVU	-	213°	222.6°T	31.8			
KUVEM 4C RNAV 1	010	CA	-	-	038°	047.3°T	-		A680+	
	020	DF	HK416	-	-	-	-			
	030	TF	LULAB	-	352°	001.0°T	6.5	L		K250-
	040	TF	HK911	-	261°	270.6°T	7.8	L		
	050	TF	KUVEM	-	227°	236.0°T	33.7			
NEPEK 4C RNAV 1	010	CA	-	-	038°	047.3°T	-		A680+	
	020	DF	HK416	-	-	-	-			
	030	TF	LULAB	-	352°	001.0°T	6.5	L		K250-
	040	TF	NEPEK	-	298°	307.0°T	23.8			
NUNTO 4C RNAV 1	010	CA	-	-	038°	047.3°T	-		A680+	
	020	DF	HK416	-	-	-	-			
	030	TF	LULAB	-	352°	001.0°T	6.5	L		K250-
	040	TF	HK911	-	261°	270.6°T	7.8	L		
	050	TF	NUNTO	-	220°	229.3°T	38.7			
RENKU 4C RNAV 1	010	CA	-	-	038°	047.3°T	-		A680+	
	020	DF	HK416	-	-	-	-			
	030	TF	HK912	-	106°	115.1°T	8.2	R		K250-
	040	TF	HK913	-	171°	179.8°T	6.3	R		
	050	TF	RENKU	-	205°	214.6°T	25.5			
TEVRU 4C RNAV 1	010	CA	-	-	038°	047.3°T	-		A680+	
	020	DF	HK416	-	-	-	-			
	030	TF	LULAB	-	352°	001.0°T	6.5			K250-
	040	TF	TEVRU	-	325°	334.6°T	21.0			
VALOX 4C RNAV 1	010	CA	-	-	038°	047.3°T	-		A680+	
	020	DF	HK416	-	-	-	-			
	030	TF	HK912	-	106°	115.1°T	8.2	R		K250-
	040	TF	HK913	-	171°	179.8°T	6.3	R		
	050	TF	VALOX	-	222°	231.4°T	48.1			

WPT COORD

SEE PAGE EFHK AD 2.15 - 1