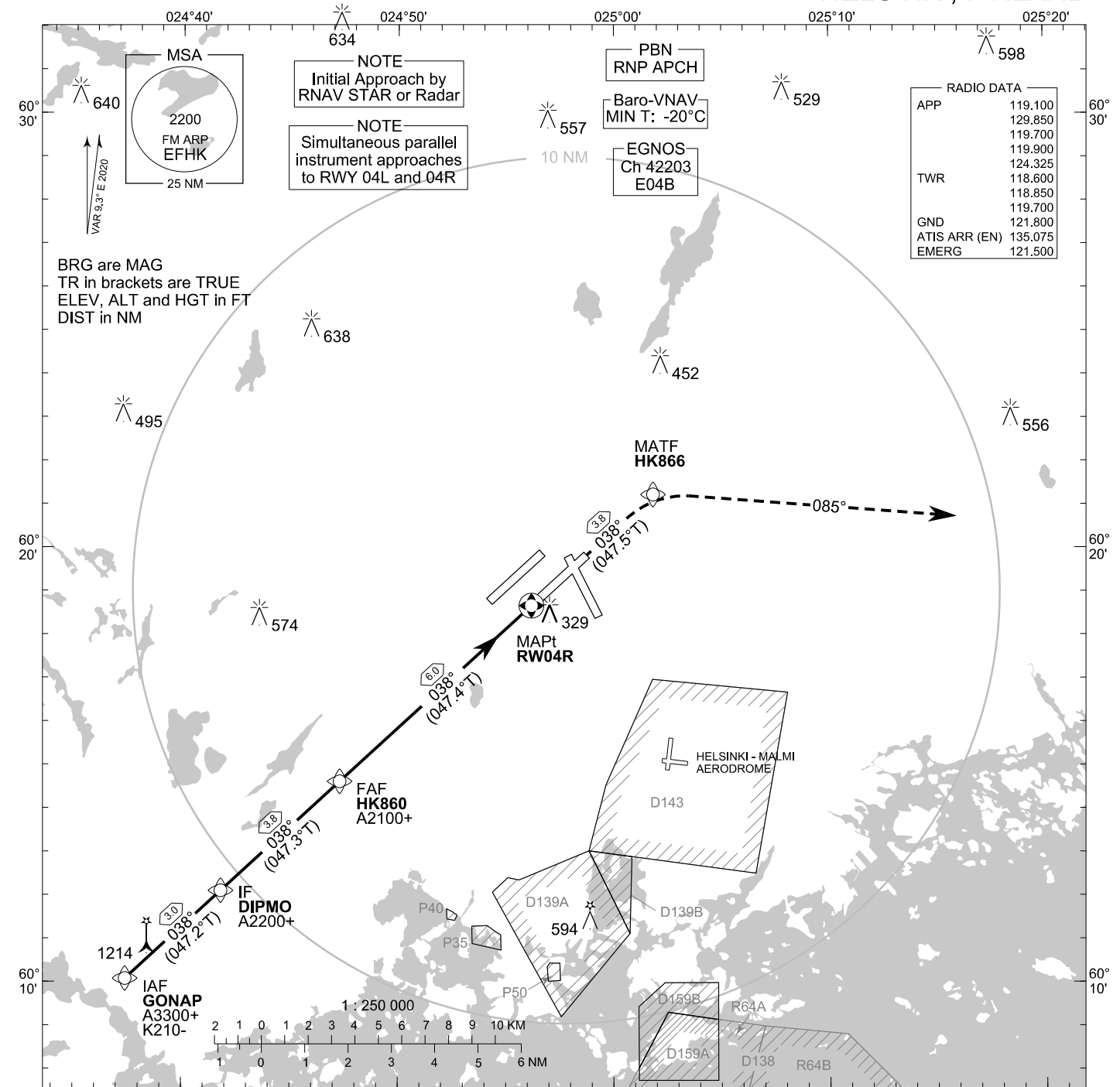


**INSTRUMENT  
APPROACH CHART - ICAO**

ELEV 180 FT  
HEIGHTS RELATED TO  
DTHR RWY 04R ELEV 152 FT

**RNP RWY 04R  
HELSINKI-VANTAA AERODROME  
HELSINKI, FINLAND**



**NOTE**  
Initial Approach by  
RNAV STAR or Radar

**NOTE**  
Simultaneous parallel  
instrument approaches  
to RWY 04L and 04R

**PBN**  
RNP APCH

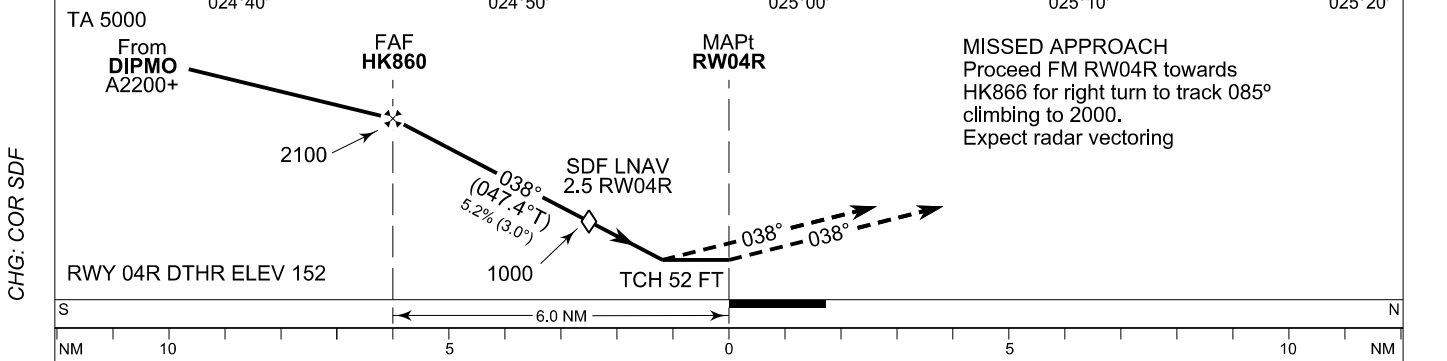
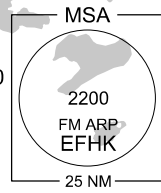
Baro-VNAV  
MIN T: -20°C

EGNOS  
Ch 42203  
E04B

**RADIO DATA**

APP	119.100
	129.850
	119.700
	119.900
	124.325
TWR	118.600
	118.850
	119.700
GND	121.800
ATIS ARR (EN)	135.075
EMERG	121.500

BRG are MAG  
TR in brackets are TRUE  
ELEV, ALT and HGT in FT  
DIST in NM



CHG: COR SDF

OCA (H)	A	B	C	D
LPV	444 (293)	457 (306)	465 (314)	475 (324)
RNAV/VNAV	459 (308)	471 (320)	480 (329)	490 (339)
RNAV	580 (430)			

DIST FM THR	6.0 NM	5.0 NM	4.0 NM	3.0 NM	2.0 NM
Altitude (Height)	2110 (1960)	1800 (1640)	1480 (1330)	1160 (1010)	840 (690)
	kt	90	100	120	140
FAF - MAPt 6.0 NM	min:sec	3:58	3:34	2:59	2:33
Rate of descent	ft/min	480	530	640	740

Timing not authorized for defining the MAPt

EFHK RNP RWY 04R										
PROC ID NAV SPEC	SEQ NR	P/T	WPT			MAG GEO TR	DIST NM	Turn Direction	Constraints	
			ID	Type	Flyover				LVL	Speed
H04R GONAP RNP APCH	005	IF	GONAP	IAF	-	038°			A3300+	K210-
	010	TF	DIPMO	IF	-	047.2°T	3.0		A2200+	
	020	TF	HK860	FAF	-	038°	3.8		A2100+	
	030	TF	RW04R	MAPt	Y	047.3°T	6.0			
	040	TF	HK866	MATF	-	038°	3.8	R		
	050	CA	-	-	-	047.4°T	-		A2000	

WPT COORD
SEE PAGE EFHK AD 2.15 - 1

FINAL APPROACH PARAMETERS			
LNAV Gradient	Baro-VNAV		TCH
	VPA	MNM T	
5.24 % (3.00°)	3.00°	-20°C	52 FT

SBAS DATA	
Approach ID	E04B
Service Provider	EGNOS
CRC remainder	18 7A 81 CC
Channel number	42203
Data Block	SEE EFHK AD 2.15 - 17