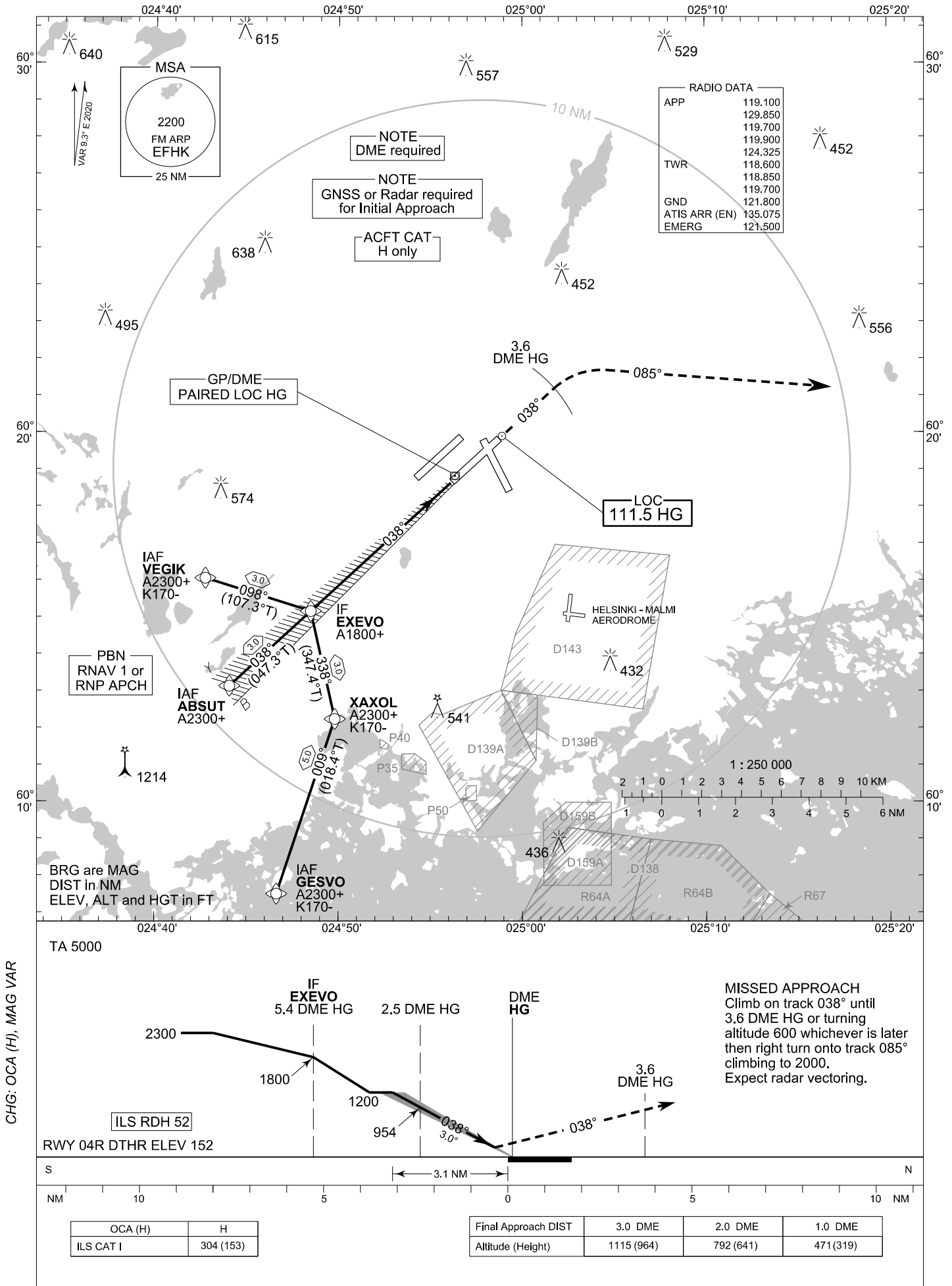


**INSTRUMENT
APPROACH CHART - ICAO**

ELEV 180 FT
HEIGHTS RELATED TO
DTHR RWY 04R ELEV 152 FT

**COPTER ILS RWY 04R
HELSINKI-VANTAA AERODROME
HELSINKI, FINLAND**



RADIO DATA

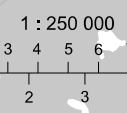
APP	119.100
	129.850
	119.700
	119.900
	124.325
TWR	118.600
	118.850
	119.700
GND	121.800
ATIS ARR (EN)	135.075
EMERG	121.500

NOTE
DME required

NOTE
GNSS or Radar required
for Initial Approach

ACFT CAT
H only

PBN
RNAV 1 or
RNP APCH



BRG are MAG
DIST in NM
ELEV, ALT and HGT in FT

CHG: OCA (H), MAG VAR

MISSED APPROACH
Climb on track 038° until
3.6 DME HG or turning
altitude 600 whichever is later
then right turn onto track 085°
climbing to 2000.
Expect radar vectoring.

OCA (H)	H
ILS CAT I	304 (153)

Final Approach DIST	3.0 DME	2.0 DME	1.0 DME
Altitude (Height)	1115 (964)	792 (641)	471 (319)

EFHK COPTER ILS RWY 04R										
PROC ID NAV SPEC	SEQ NR	P/T	WPT			MAG GEO TR	DIST NM	Turn Direction	Constraints	
			ID	Type	Flyover				LVL	Speed
I04R VEGIK RNAV 1 or RNP APCH	005	IF	VEGIK	IAF	-	098° 107.3°T	3.0		A2300+	K170-
	010	TF	EXEVO	IF	-				L	A1800+

EFHK COPTER ILS RWY 04R										
PROC ID NAV SPEC	SEQ NR	P/T	WPT			MAG GEO TR	DIST NM	Turn Direction	Constraints	
			ID	Type	Flyover				LVL	Speed
I04R ABSUT RNAV 1 or RNP APCH	005	IF	ABSUT	IAF	-	038° 047.3°T	3.0		A2300+	
	010	TF	EXEVO	IF	-				A1800+	

EFHK COPTER ILS RWY 04R										
PROC ID NAV SPEC	SEQ NR	P/T	WPT			MAG GEO TR	DIST NM	Turn Direction	Constraints	
			ID	Type	Flyover				LVL	Speed
I04R GESVO RNAV 1 or RNP APCH	005	IF	GESVO	IAF	-	009° 018.4°T 338° 347.4°T	5.0		A2300+	K170-
	010	TF	XAXOL	-	-				L	A2300+
	020	TF	EXEVO	IF	-		3.0	R	A1800+	

WPT COORD
SEE PAGE EFHK AD 2.15 - 1

FINAL APPROACH PARAMETERS			
LOC Gradient	ILS		RDH
	CAT	GPA	
-	I	3.00°	52 FT