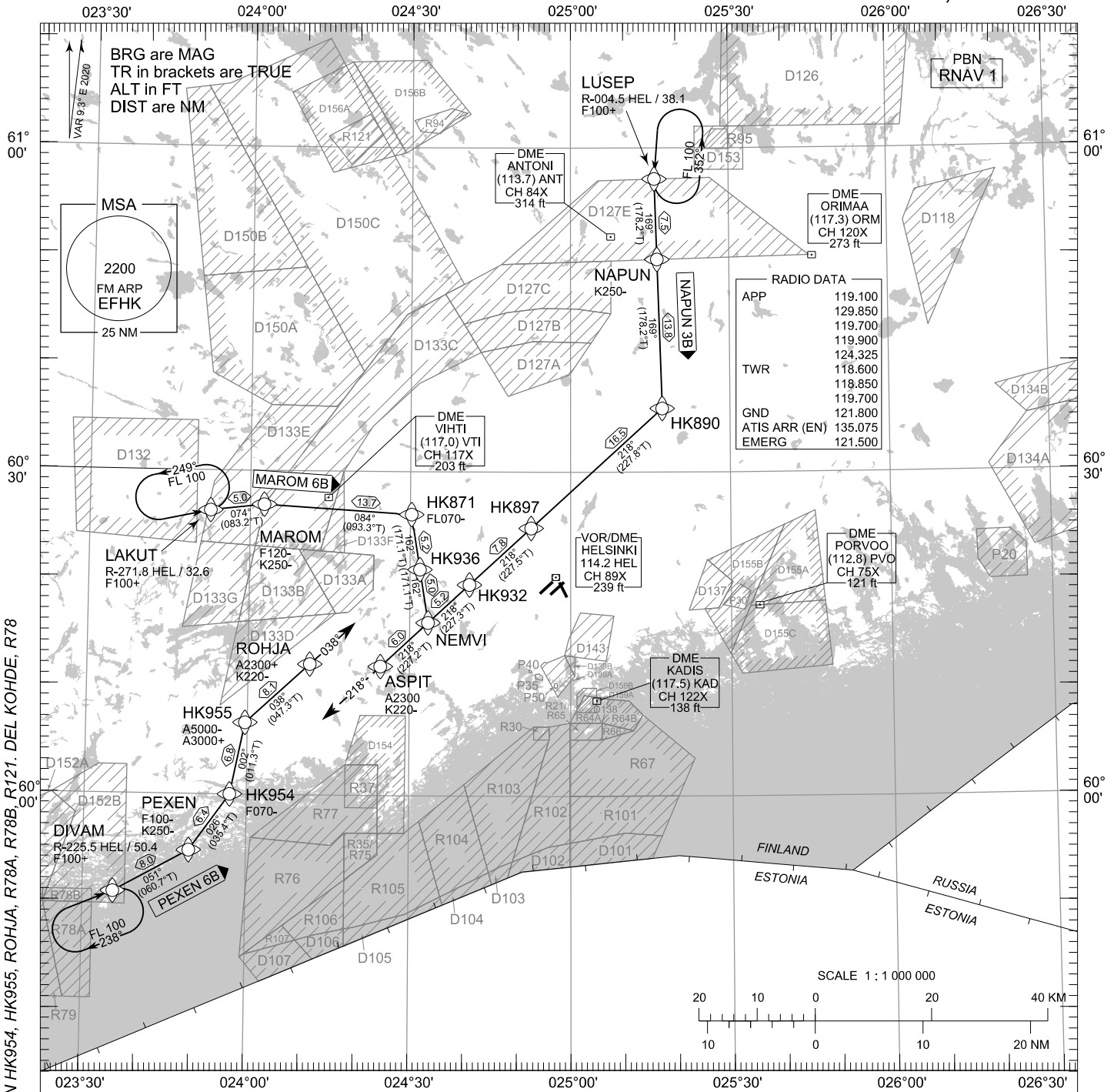


STANDARD ARRIVAL CHART
INSTRUMENT (STAR) - ICAO

TRANSITION ALT
5000

RNAV (DME/DME or GNSS) STAR RWY 04L 2/2
HELSINKI-VANTAA AERODROME
HELSINKI, FINLAND



CHG: PBN, RTE PEXEN. ADDN HK954, HK955, ROHJA, R78A, R78B, R121. DEL KOHDE, R78

RNAV STAR RWY 04L 2/2
MAROM 6B NAPUN 3B PEXEN 6B

- DME/DME OPS: MORE THAN 2 DME INPUTS CANNOT BE GUARANTEED AT ALL TIMES.
- AREA MNM ALT: SEE AMA INDEX, AIP ENR 6.1 - 3
- ROUTES: RNAV PROC CODING ON THE VERSO OF THE CHART.
- UNLESS OTHERWISE INSTRUCTED, STAR MUST BE FLOWN ACCORDING TO THE DEFINED WAYPOINT SEQUENCE UNTIL THE LAST WAYPOINT AND THEN CONTINUE ON THE DEFINED COURSE. ATC CLEARANCE TO INBOUND IS ALWAYS REQUIRED.
- ATC WILL GIVE DESCENT CLEARANCES.
- WPT CONSTRAINTS: ALT / FL / SPEED CONSTRAINTS MUST ALWAYS BE FOLLOWED AS PUBLISHED UNLESS EXPLICITLY CANCELLED BY ATC.
- CD OPS: BY ATC CLR IF TFC PERMITS. PLAN CD PATH ACCORDING TO STAR FOLLOWED BY DCT INTERCEPT TO IAF OF THE ACKNOWLEDGED IAP OR AS ADVISED BY ATC.

- RCF: SELECT TRANSPONDER CODE 7600.
- RNAV STAR HAS BEEN GIVEN AND ACKNOWLEDGED:
FOLLOW THE STAR UNTIL THE LAST WAYPOINT AND PROCEED TO IAF. IF RADAR VECTORED, CONTINUE 2 MIN ON LAST ASSIGNED AND ACKNOWLEDGED HDG AND ALT/FL, THEN RESUME STAR UNTIL THE LAST WAYPOINT AND PROCEED TO IAF.
- RNAV STAR HAS NOT BEEN GIVEN AND ACKNOWLEDGED:
CONTINUE 2 MIN ON LAST ASSIGNED AND ACKNOWLEDGED HDG AND ALT/FL, THEN PROCEED TO IAF.
- FROM IAF EXECUTE IAP TO THE ACKNOWLEDGED RWY AND VACATE.
- AIRCRAFT HAVING TELEPHONE, CALL +358 9 6151 3324.

EFHK RNAV STAR RWY 04L 2/2										
RTE NAV SPEC	SEQ NR	P/T	WPT		MAG	GEO TR	DIST NM	Turn Direction	Constraints	
			ID	Flyover					LVL	Speed
MAROM 6B RNAV 1	010	IF	LAKUT	-	-	-	-		F100+	
	020	TF	MAROM	-	074°	083.2°T	5.0		F120-	K250-
	030	TF	HK871	-	084°	093.3°T	13.7	R	F070-	
	040	TF	HK936	-	162°	171.1°T	5.2			
	050	TF	NEMVI	-	162°	171.1°T	5.0	R		
	060	TF	ASPIT	-	218°	227.2°T	6.0		A2300	K220-
	070	FM	ASPIT	-	218°	227.2°T	-		A2300	K220-

NAPUN 3B RNAV 1	010	IF	LUSEP	-	-	-	-		F100+	
	020	TF	NAPUN	-	169°	178.2°T	7.5			K250-
	030	TF	HK890	-	169°	178.2°T	13.8	R		
	040	TF	HK897	-	218°	227.8°T	16.5			
	050	TF	HK932	-	218°	227.5°T	7.8			
	060	TF	NEMVI	-	218°	227.3°T	5.2			
	070	TF	ASPIT	-	218°	227.2°T	6.0		A2300	K220-
	080	FM	ASPIT	-	218°	227.2°T	-		A2300	K220-

PEXEN 6B RNAV 1	010	IF	DIVAM	-	-	-	-		F100+	
	020	TF	PEXEN	-	051°	060.7°T	8.0		F100-	K250-
	030	TF	HK954	-	026°	035.4°T	6.4		F070-	
	040	TF	HK955	-	002°	011.3°T	6.8	R	A5000- A3000+	
	050	TF	ROHJA	-	038°	047.3°T	8.1		A2300+	K220-
	060	FM	ROHJA	-	038°	047.3°T	-		A2300+	K220-

RNAV Holdings								
ID	INBD TR	INBD MAG	Turn Direction	MAX IAS	MNM HLDG LVL	TIME	DIST NM	
DIVAM	067.4°T	058°	Right	230 KT	F100	1 MIN	-	
LAKUT	077.9°T	069°	Left	230 KT	F100	1 MIN	-	
LUSEP	181.3°T	172°	Left	230 KT	F100	1 MIN	-	

WPT COORD
SEE PAGE EFHK AD 2.15 - 1