

AIP SUPPLEMENT - SUOMI / FINLAND

Aeronautical Information Service

www.ais.fi

Fintraffic ANS, PL 157, FI-01531 VANTAA, ais@fintraffic.fi

AIP SUP NR
107 / 2024

AIRAC

WEF
05 SEP 2024

JOENSUUN LENTOASEMA (EFJO), MITTARILÄ- HESTYMISMENETELMÄN ILS Y or LOC Y RWY 28 KÄYTTÖÖNOTTO

REF AIP AD 2 EFJO

Tämän supplementin liitteenä on julkaistu mittarilähestymismenetelmä EFJO ILS Y or LOC Y RWY 28. Menetelmän tarkoituksena on tukea toimintaa GNSS-katkos- tai häiriötilanteissa.

JOENSUU AERODROME (EFJO), INTRODUC- TION OF INSTRUMENT APPROACH PROCEDURE ILS Y or LOC Y RWY 28

REF AIP AD 2 EFJO

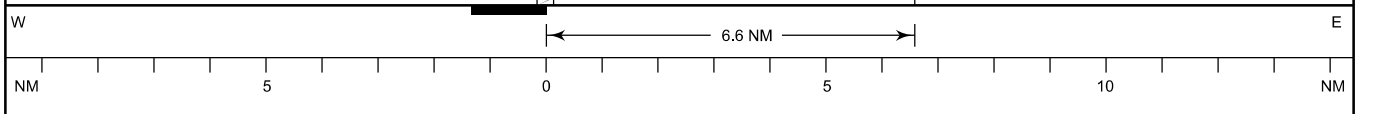
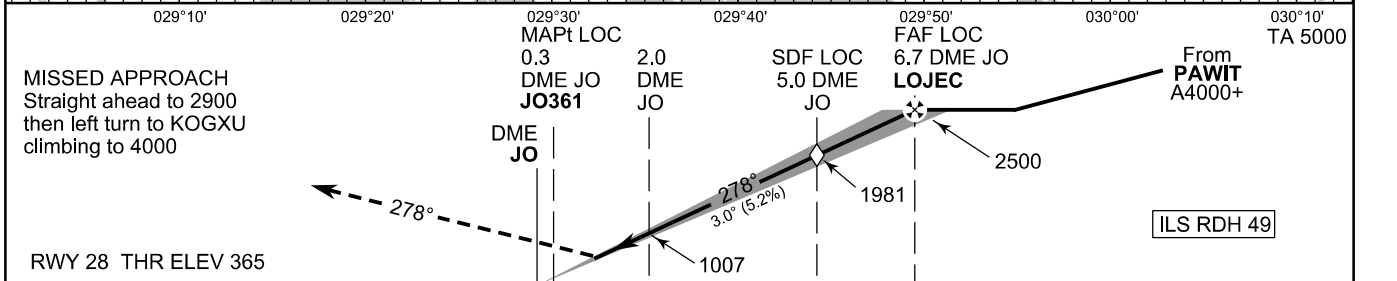
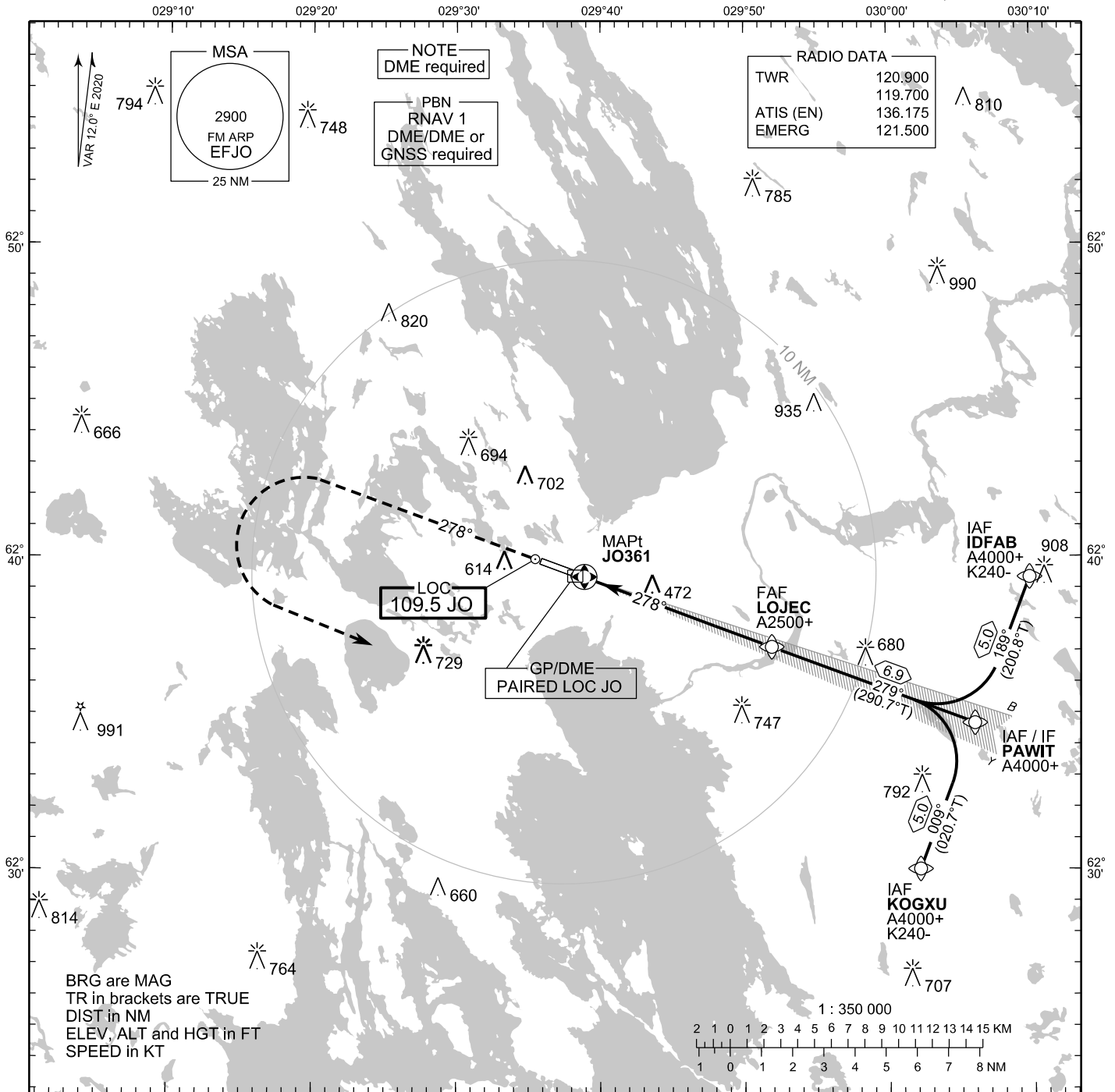
The instrument approach procedure EFJO ILS Y or LOC Y RWY 28 has been published as an Appendix to this supplement. The purpose of the procedure is to support operations in situations of GNSS outage or degradation.

LIITE / APPENDIX: EFJO ILS Y or LOC Y RWY 28

**INSTRUMENT
APPROACH CHART - ICAO**

ELEV 399 FT
HEIGHTS RELATED TO
THR RWY 28 ELEV 365 FT

**ILS Y or LOC Y RWY 28
JOENSUU AERODROME
JOENSUU, FINLAND**



OCA (H)	A	B	C	D
ILS CAT I	517 (152)	527 (162)	539 (174)	552 (187)
LOC	720 (360)			
LOC WO SDF	1980 (1620)			
Circling	910 (510)	1000 (600)	1100 (700)	1130 (730)

	kt	90	100	120	140	160
FAF - MAPt 6.4 NM	min:sec	4:16	3:51	3:12	2:45	2:24
Rate of descent	ft/min	480	530	640	740	850

Timing not authorized for defining the MAPt

EFJO ILS Y or LOC Y RWY 28										
PROC ID NAV SPEC	SEQ NR	P/T	WPT			MAG	GEO TR	DIST NM	Constraints	
			ID	Type	Flyover				LVL	Speed
I28 KOGXU RNAV 1	005	IF	KOGXU	IAF	-	009°	020.7°T	5.0	A4000+	K240-
	010	TF	PAWIT	IF	-				A4000+	
	020	TF	LOJEC	FAF LOC	-	279°	290.7°T	6.9	A2500+	
	030	TF	JO361	MAPt LOC	Y	278°	290.0°T	-		
	040	CA	-	-	-				A2900+	
	050	DF	KOGXU	MATF	-	-	-	-	A4000	

EFJO ILS Y or LOC Y RWY 28										
PROC ID NAV SPEC	SEQ NR	P/T	WPT			MAG	GEO TR	DIST NM	Constraints	
			ID	Type	Flyover				LVL	Speed
I28 PAWIT RNAV 1	010	IF	PAWIT	IAF/IF	-	279°	290.7°T	6.9	A4000+	
	020	TF	LOJEC	FAF LOC	-				A2500+	
	030	TF	JO361	MAPt LOC	Y	278°	290.0°T	-		
	040	CA	-	-	-				A2900+	
	050	DF	KOGXU	MATF	-	-	-	-	A4000	

EFJO ILS Y or LOC Y RWY 28										
PROC ID NAV SPEC	SEQ NR	P/T	WPT			MAG	GEO TR	DIST NM	Constraints	
			ID	Type	Flyover				LVL	Speed
I28 IDFAB RNAV 1	005	IF	IDFAB	IAF	-	189°	200.8°T	5.0	A4000+	K240-
	010	TF	PAWIT	IF	-				A4000+	
	020	TF	LOJEC	FAF LOC	-	279°	290.7°T	6.9	A2500+	
	030	TF	JO361	MAPt LOC	Y	278°	290.0°T	-		
	040	CA	-	-	-				A2900+	
	050	DF	KOGXU	MATF	-	-	-	-	A4000	

WPT COORD	
ID	COORD
KOGXU	623001.29N 0300208.86E
IDFAB	623920.69N 0300948.38E
PAWIT	623441.05N 0300558.02E
LOJEC	623707.62N 0295153.92E
JO361	623921.57N 0293853.30E

FINAL APPROACH PARAMETERS			
LOC Gradient	ILS		RDH
	CAT	GPA	
5.24 % (3.00°)	I	3.00°	49 FT