

AIP SUPPLEMENT - SUOMI / FINLAND

Aeronautical Information Service

www.ais.fi

Fintraffic ANS, PL 157, FI-01531 VANTAA, ais@fintraffic.fi

AIP SUP NR
026 / 2024

AIRAC

WEF
18 APR 2024

KUOPION LENTOASEMA (EFKU), LENTOMENETELMÄT AJALLA 18.4. - 11.7.2024

REF AIP SUP 023/2024

Alla luetellut lentomenetelmät on julkaistu ajalle **18.4. - 11.7.2024** tämän Supplementin liitteinä.

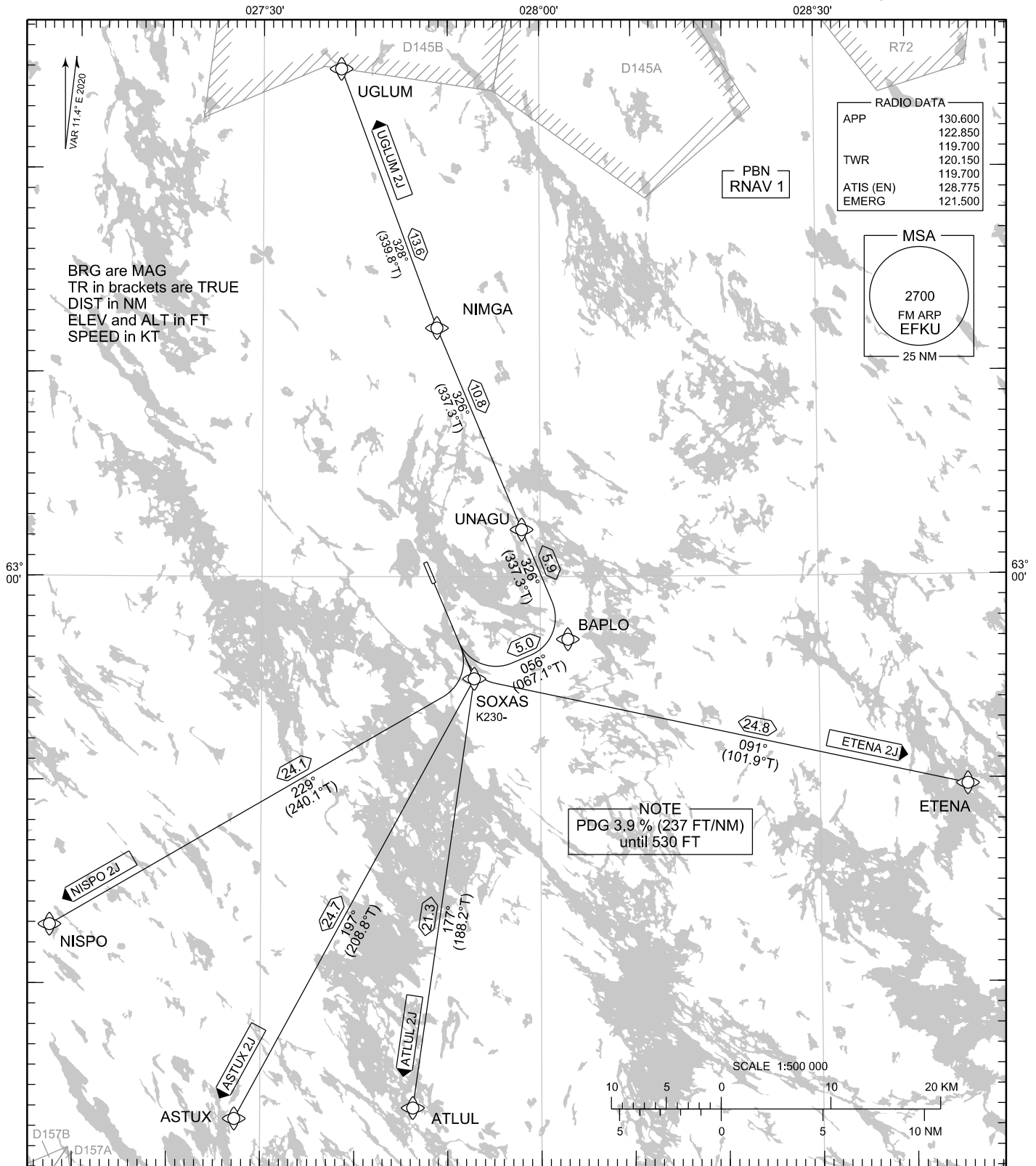
KUOPIO AERODROME (EFKU), INSTRUMENT APPROACH PROCEDURES FROM 18 APR TO 11 JUL 2024

REF AIP SUP 023/2024

The instrument approach procedures listed below have been published **for the period of 18 APR - 11 JUL 2024** as Appendices to this Supplement.

LIITTEET / APPENDICES:

1. EFKU RNAV SID RWY 15C
2. EFKU RNAV STAR RWY 15C
3. EFKU RNP RWY 15C



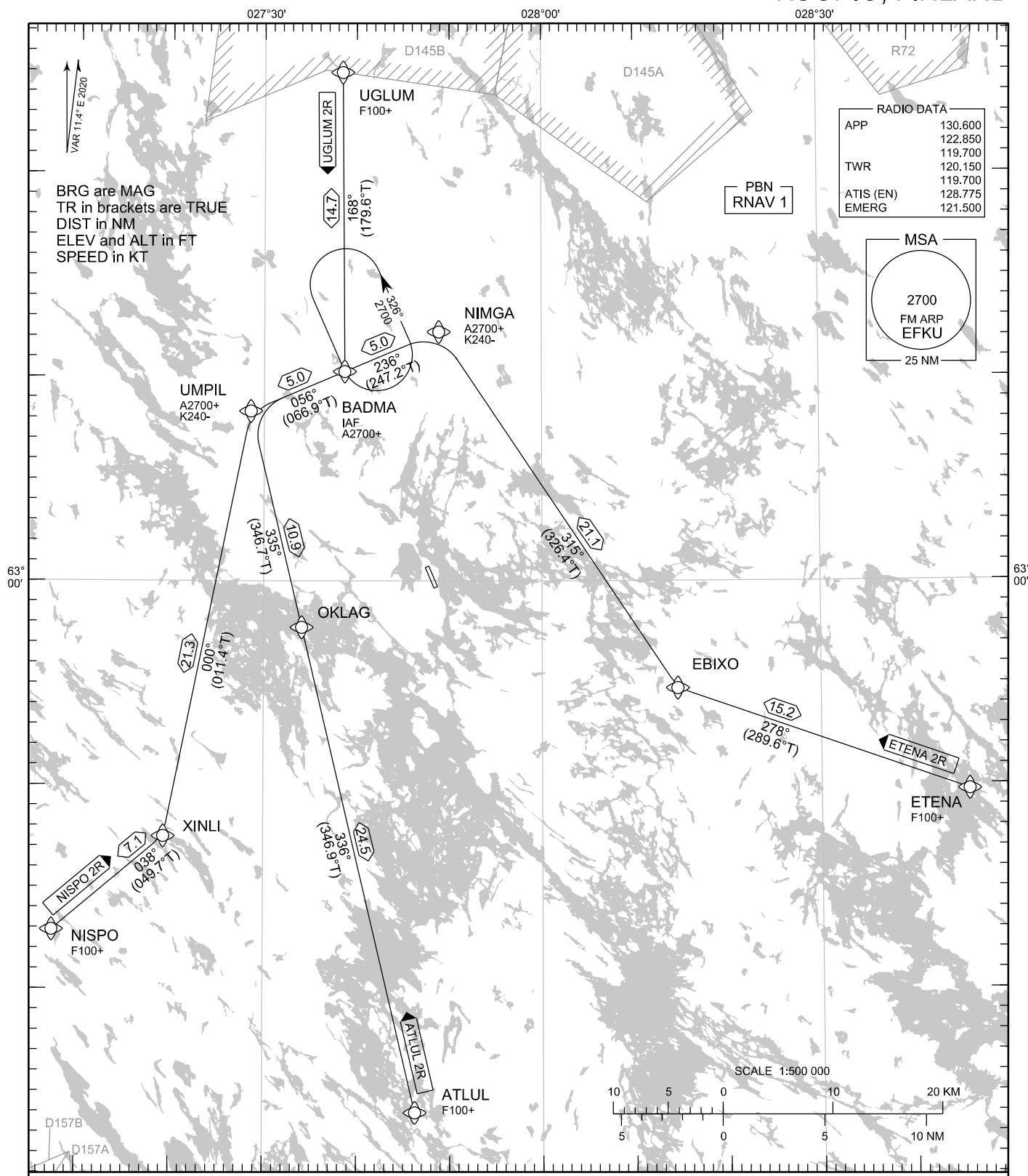
RNAV SID RWY 15C

ASTUX 2J ATLUL 2J ETENA 2J NISPO 2J UGLUM 2J

- DME/DME OPS: NOT SUPPORTED
- ROUTES: RNAV PROC CODING ON THE VERSO OF THE CHART
- SQUAWK: WHEN LINING UP SQUAWK THE ASSIGNED CODE
- INITIAL CLIMB: MNM TURNING ALT ACCORDING TO RTE CODING.
PDG 3.9% (237 FT/NM) UNTIL 530 FT. CLOSE-IN OBSTACLES EXIST
- NOISE ABATEMENT: AFTER TAKE-OFF CLIMB AS RAPIDLY AS POSSIBLE TO AT LEAST 2000 FT ABOVE AD ELEV.
PUBLISHED SID ROUTES ARE ALSO MINIMUM NOISE ROUTINGS
- AREA MNM ALT: SEE AMA INDEX, AIP ENR 6.1 - 3

EFKU RNAV SID RWY 15C										
RTE NAV SPEC	SEQ NR	P/T	WPT		MAG	GEO TR	DIST NM	Turn Direction	Constraints	
			ID	Flyover					LVL	Speed
ASTUX 2J RNAV 1	010	CA	-	-	147°	158.4°T	-		A740+	
	020	DF	SOXAS	-	-	-	-			K230-
	030	TF	ASTUX	-	197°	208.8°T	24.7			
ATLUL 2J RNAV 1	010	CA	-	-	147°	158.4°T	-		A740+	
	020	DF	SOXAS	-	-	-	-			K230-
	030	TF	ATLUL	-	177°	188.2°T	21.3			
ETENA 2J RNAV 1	010	CA	-	-	147°	158.4°T	-		A740+	
	020	DF	SOXAS	-	-	-	-			K230-
	030	TF	ETENA	-	091°	101.9°T	24.8			
NISPO 2J RNAV 1	010	CA	-	-	147°	158.4°T	-		A740+	
	020	DF	SOXAS	-	-	-	-			K230-
	030	TF	NISPO	-	229°	240.1°T	24.1			
UGLUM 2J RNAV 1	010	CA	-	-	147°	158.4°T	-		A740+	
	020	DF	SOXAS	-	-	-	-			K230-
	030	TF	BAPLO	-	056°	067.1°T	5.0	L		
	040	TF	UNAGU	-	326°	337.3°T	5.9			
	050	TF	NIMGA	-	326°	337.3°T	10.8			
	060	TF	UGLUM	-	328°	339.8°T	13.6			

WPT COORD
SEE PAGE EFKU AD 2.15 - 1



DME/DME OPS:	NOT SUPPORTED	NOISE ABATEMENT:	AVOID OVERFLYING THE CITY OF KUOPIO BELOW 2000
ROUTES:	RNAV PROC CODING ON THE VERSO OF THE CHART ATC WILL GIVE DESCENT CLEARANCES	RCF:	SELECT TRANSPONDER CODE 7600
WPT CONSTRAINTS:	ALT / FL / SPEED CONSTRAINTS MUST ALWAYS BE FOLLOWED AS PUBLISHED UNLESS EXPLICITLY CANCELLED BY ATC		RNAV STAR HAS BEEN GIVEN AND ACKNOWLEDGED: FOLLOW THE STAR TO THE RESPECTIVE RWY AND EXECUTE IAP AND LAND
CD OPS:	BY ATC CLR IF TFC PERMITS. PLAN CD PATH ACCORDING TO STAR	AREA MNM ALT:	SEE AMA INDEX, AIP ENR 6.1 - 3
			DURING RADAR VECTORIZING BEFORE IAF: IN ACCORDANCE WITH THE RULES OF THE AIR

EFKU RNAV STAR RWY 15C										
RTE NAV SPEC	SEQ NR	P/T	WPT		MAG	GEO TR	DIST NM	Constraints		
			ID	Flyover				LVL	LVL	Speed
ATLUL 2R RNAV 1	010	IF	ATLUL	-	-	-	-	F100+		
	020	TF	OKLAG	-	336°	346.9°T	24.5			
	030	TF	UMPIL	-	335°	346.7°T	10.9	A2700+		K240-
	040	TF	BADMA	-	056°	066.9°T	5.0	A2700+		

ETENA 2R RNAV 1	010	IF	ETENA	-	-	-	-	F100+		
	020	TF	EBIXO	-	278°	289.6°T	15.2			
	030	TF	NIMGA	-	315°	326.4°T	21.1	A2700+		K240-
	040	TF	BADMA	-	236°	247.2°T	5.0	A2700+		

NISPO 2R RNAV 1	010	IF	NISPO	-	-	-	-	F100+		
	020	TF	XINLI	-	038°	049.7°T	7.1			
	030	TF	UMPIL	-	000°	011.4°T	21.3	A2700+		K240-
	040	TF	BADMA	-	056°	066.9°T	5.0	A2700+		

UGLUM 2R RNAV 1	010	IF	UGLUM	-	-	-	-	F100+		
	020	TF	BADMA	-	168°	179.6°T	14.7	A2700+		

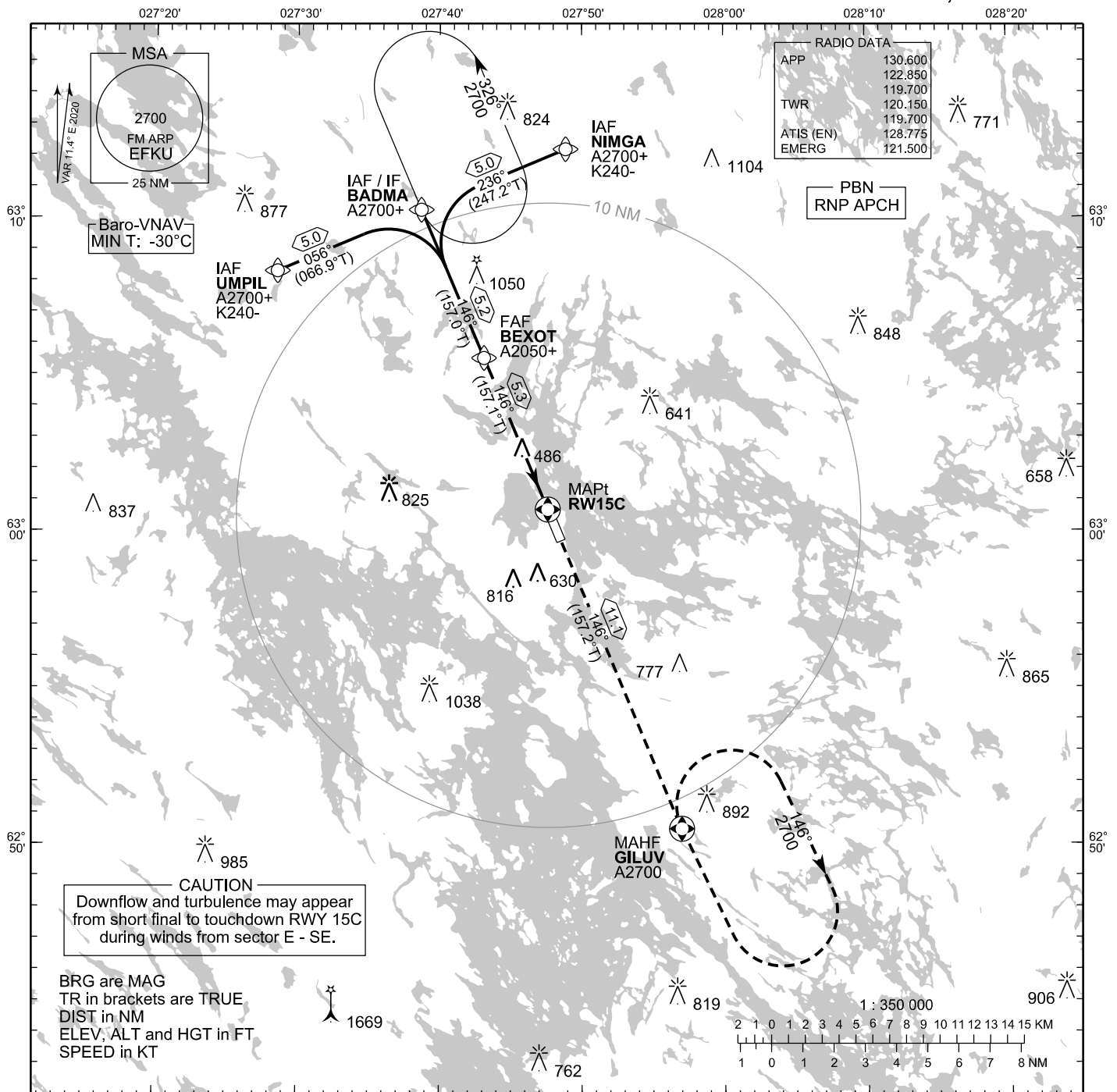
RNAV Holdings									
ID	INBD TR	INBD MAG	Turn Direction	Speed	MNM HLDG LVL	TIME	DIST NM		
BADMA	157.2°T	146°	Left	K230-	A2700	1 MIN	-		

WPT COORD
SEE PAGE EFKU AD 2.15 - 1

**INSTRUMENT
APPROACH CHART - ICAO**

ELEV 324 FT
HEIGHTS RELATED TO
THR RWY 15C ELEV 324 FT

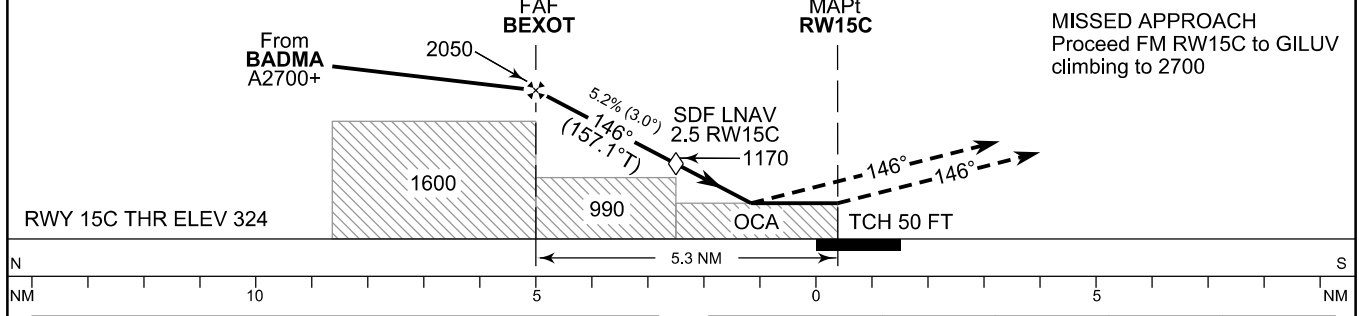
**RNP RWY 15C
KUOPIO AERODROME
KUOPIO, FINLAND**



CAUTION
Downflow and turbulence may appear from short final to touchdown RWY 15C during winds from sector E - SE.

BRG are MAG
TR in brackets are TRUE
DIST in NM
ELEV, ALT and HGT in FT
SPEED in KT

TA 5000



OCA (H)	A	B	C	D
LNAV/VNAV	585 (261)	597 (273)	625 (301)	648 (324)
LNAV	740 (410)			
Circling	930 (610)	1120 (790)	1210 (890)	1220 (900)

DIST FM THR	5.0 NM	4.0 NM	3.0 NM	2.0 NM		
Altitude (Height)	1970 (1640)	1650 (1320)	1330 (1010)	1010 (690)		
	kt	90	100	120	140	160
FAF - MAPt 5.3 NM	min:sec	3:31	3:10	2:38	2:15	1:58
Rate of descent	ft/min	480	530	640	740	850

Timing not authorized for defining the MAPt

EFKU RNP RWY 15C										
PROC ID NAV SPEC	SEQ NR	P/T	WPT			MAG	GEO TR	DIST NM	Constraints	
			ID	Type	Flyover				LVL	Speed
H15C NIMGA RNP APCH	005	IF	NIMGA	IAF	-	236°	247.2°T	5.0	A2700+	K240-
	010	TF	BADMA	IF	-				146°	157.0°T
	020	TF	BEXOT	FAF	-	146°	157.1°T	5.3	A2050+	
	030	TF	RW15C	MAPt	Y	146°	157.2°T	11.1		
	040	TF	GILUV	MAHF	Y				A2700	

EFKU RNP RWY 15C										
PROC ID NAV SPEC	SEQ NR	P/T	WPT			MAG	GEO TR	DIST NM	Constraints	
			ID	Type	Flyover				LVL	Speed
H15C BADMA RNP APCH	010	IF	BADMA	IAF/IF	-	146°	157.0°T	5.2	A2700+	
	020	TF	BEXOT	FAF	-				146°	157.1°T
	030	TF	RW15C	MAPt	Y	146°	157.2°T	11.1		
	040	TF	GILUV	MAHF	Y				A2700	

EFKU RNP RWY 15C										
PROC ID NAV SPEC	SEQ NR	P/T	WPT			MAG	GEO TR	DIST NM	Constraints	
			ID	Type	Flyover				LVL	Speed
H15C UMPIL RNP APCH	005	IF	UMPIL	IAF	-	056°	066.9°T	5.0	A2700+	K240-
	010	TF	BADMA	IF	-				146°	157.0°T
	020	TF	BEXOT	FAF	-	146°	157.1°T	5.3	A2050+	
	030	TF	RW15C	MAPt	Y	146°	157.2°T	11.1		
	040	TF	GILUV	MAHF	Y				A2700	

RNAV Holdings							
ID	INBD TR	INBD MAG	Turn Direction	Speed	MNM HLDG LVL	TIME	DIST NM
BADMA	157.2°T	146°	Left	K230-	A2700	1 MIN	-
GILUV	337.2°T	326°	Right	K230-	A2700	1 MIN	-

WPT COORD	
ID	COORD
NIMGA	631212.41N 0274852.11E
UMPIL	630819.14N 0272833.42E
BADMA	631016.14N 0273842.08E
BEXOT	630532.27N 0274307.32E
RW15C	630042.08N 0274736.83E
GILUV	625030.09N 0275659.95E

FINAL APPROACH PARAMETERS			
LNAV Gradient	Baro-VNAV		TCH
	VPA	MNM T	
5.24 % (3.00°)	3.00°	-30°C	50 FT