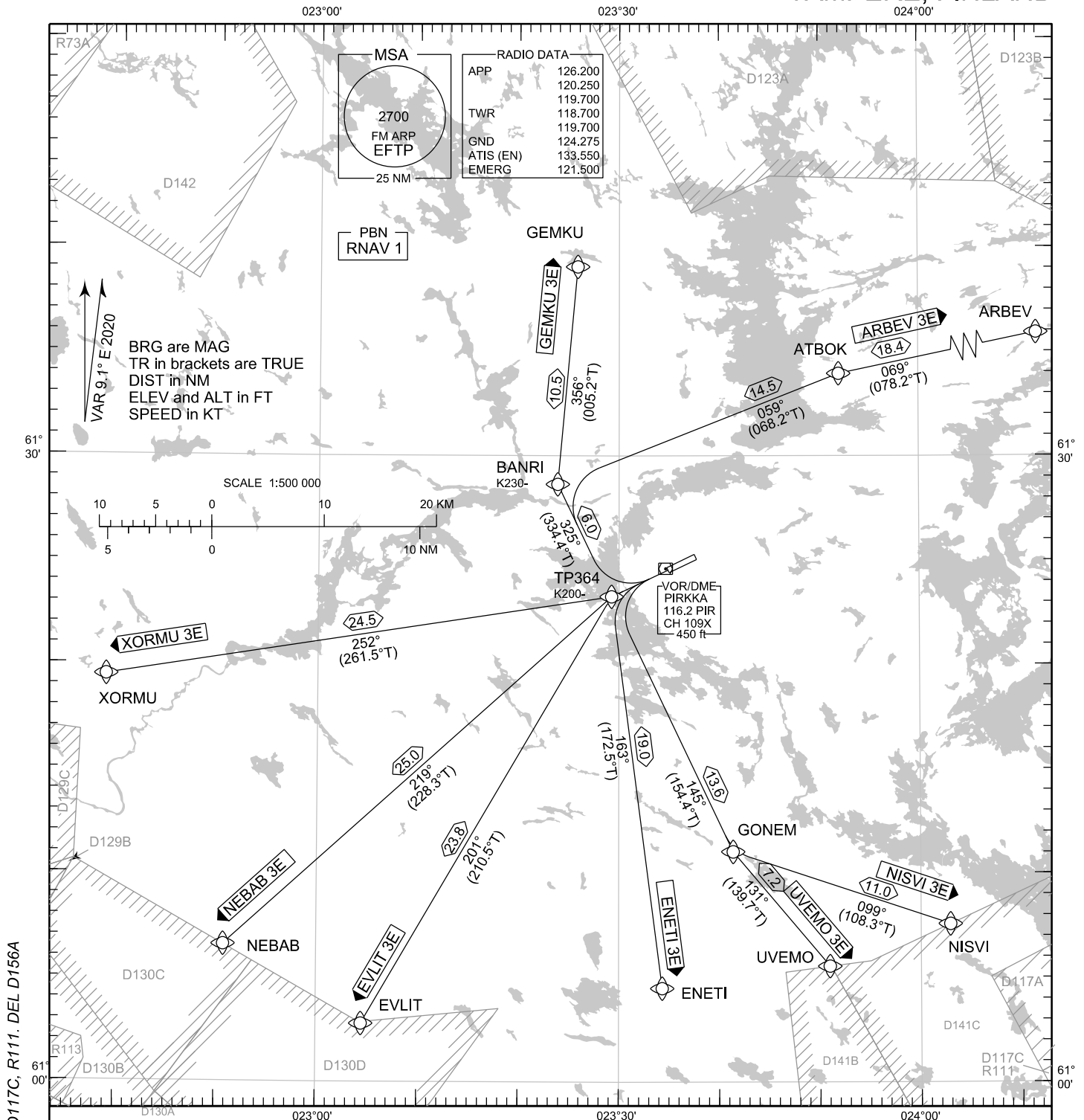


STANDARD DEPARTURE CHART
INSTRUMENT (SID) - ICAO

TRANSITION ALT
5000

RNAV^(GNSS) SID RWY 24
TAMPERE-PIRKKALA AERODROME
TAMPERE, FINLAND



CHG: ADDN D117A, D117C, R111. DEL D156A

RNAV SID RWY 24

ARBEV 3E ENETI 3E EVLIT 3E GEMKU 3E NEBAB 3E NISVI 3E UVEMO 3E XORMU 3E

DME/DME OPS: NOT SUPPORTED

ROUTES: RNAV PROC CODING ON THE VERSO OF THE CHART

SQUAWK: WHEN LINING UP SQUAWK THE ASSIGNED CODE

INITIAL CLIMB: MNM TURNING ALTITUDE ACCORDING TO RTE CODING.
CLOSE-IN OBSTACLES EXIST, SEE EFTP AD 2.10 - 5

RADIO CONTACT: MAINTAIN TWR FREQ UNTIL 1500 FT, THEN CONTACT PIRKkala RADAR FREQ 126.200

NOISE ABATEMENT: AFTER TAKE-OFF CLIMB AS RAPIDLY AS PRACTICABLE TO AT LEAST 2000 FT ABOVE AD ELEV
PUBLISHED SID ROUTES ARE ALSO MINIMUM NOISE ROUTINGS

AREA MNM ALT: SEE AMA INDEX, AIP ENR 6.1 - 3

EFTP RNAV SID RWY 24										
RTE NAV SPEC	SEQ NR	P/T	WPT		MAG	GEO TR	DIST NM	Turn Direction	Constraints	
			ID	Flyover					LVL	Speed
ARBEV 3E RNAV 1	010	CA	-	-	235°	244.1°T	-		A790+	
	020	DF	TP364	-	-	-	-			K200-
	030	TF	BANRI	-	325°	334.4°T	6.0	R		K230-
	040	TF	ATBOK	-	059°	068.2°T	14.5			
	050	TF	ARBEV	-	069°	078.2°T	18.4			
ENETI 3E RNAV 1	010	CA	-	-	235°	244.1°T	-		A790+	
	020	DF	TP364	-	-	-	-			K200-
	030	TF	ENETI	-	163°	172.5°T	19.0			
EVLIT 3E RNAV 1	010	CA	-	-	235°	244.1°T	-		A790+	
	020	DF	TP364	-	-	-	-			K200-
	030	TF	EVLIT	-	201°	210.5°T	23.8			
GEMKU 3E RNAV 1	010	CA	-	-	235°	244.1°T	-		A790+	
	020	DF	TP364	-	-	-	-			K200-
	030	TF	BANRI	-	325°	334.4°T	6.0	R		K230-
	040	TF	GEMKU	-	356°	005.2°T	10.5			
NEBAB 3E RNAV 1	010	CA	-	-	235°	244.1°T	-		A790+	
	020	DF	TP364	-	-	-	-			K200-
	030	TF	NEBAB	-	219°	228.3°T	25.0			
NISVI 3E RNAV 1	010	CA	-	-	235°	244.1°T	-		A790+	
	020	DF	TP364	-	-	-	-			K200-
	030	TF	GONEM	-	145°	154.4°T	13.6	L		
	040	TF	NISVI	-	099°	108.3°T	11.0			
UVEMO 3E RNAV 1	010	CA	-	-	235°	244.1°T	-		A790+	
	020	DF	TP364	-	-	-	-			K200-
	030	TF	GONEM	-	145°	154.4°T	13.6			
	040	TF	UVEMO	-	131°	139.7°T	7.2			
XORMU 3E RNAV 1	010	CA	-	-	235°	244.1°T	-		A790+	
	020	DF	TP364	-	-	-	-			K200-
	030	TF	XORMU	-	252°	261.5°T	24.5			

WPT COORD

SEE PAGE EFTP AD 2.15 - 1