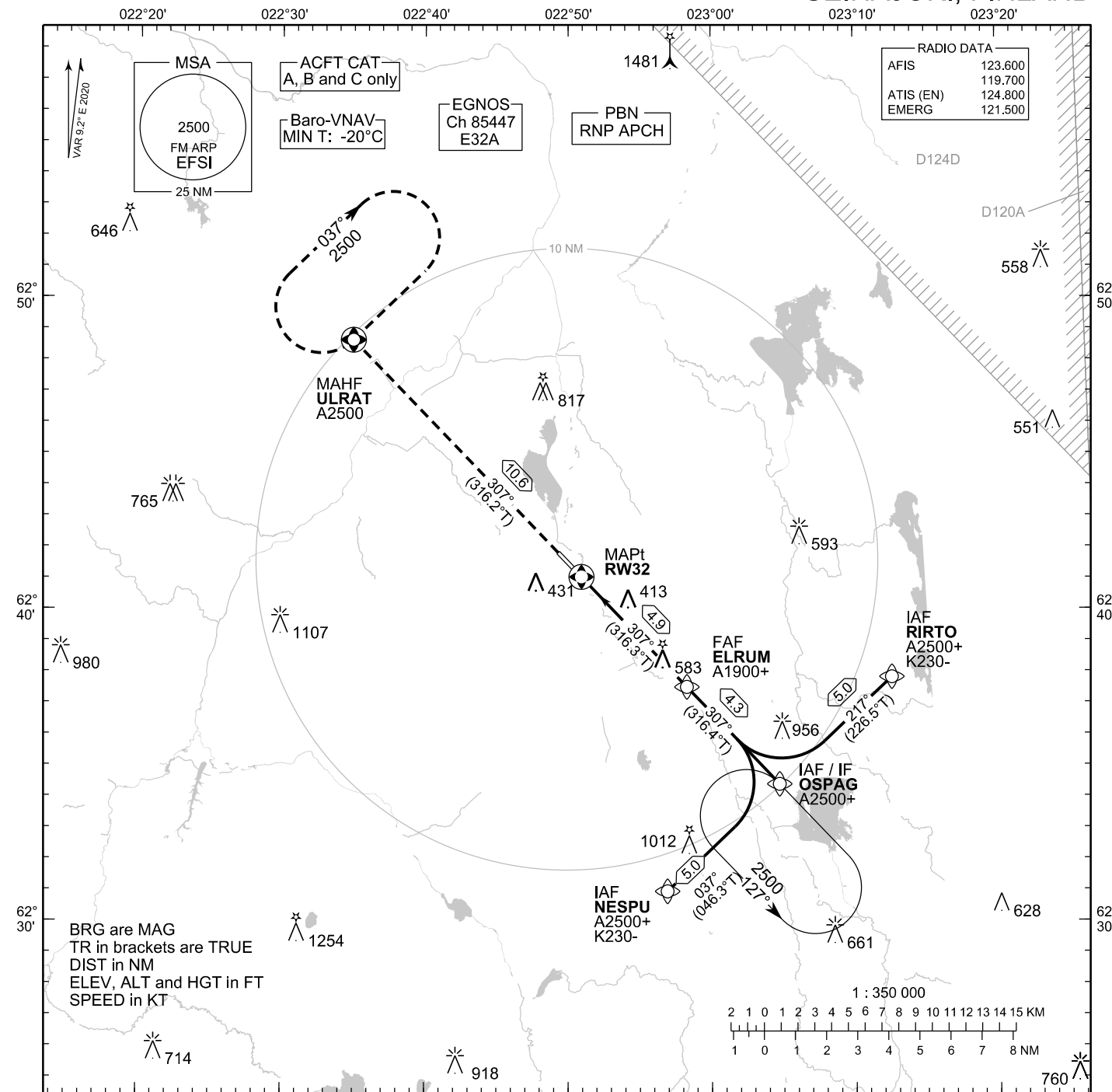


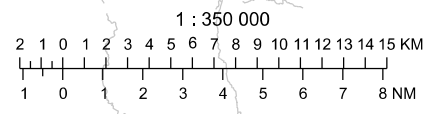
**INSTRUMENT
APPROACH CHART - ICAO**

ELEV 303 FT
HEIGHTS RELATED TO
THR RWY 32 ELEV 284 FT

**RNP RWY 32
SEINÄJOKI AERODROME
SEINÄJOKI, FINLAND**

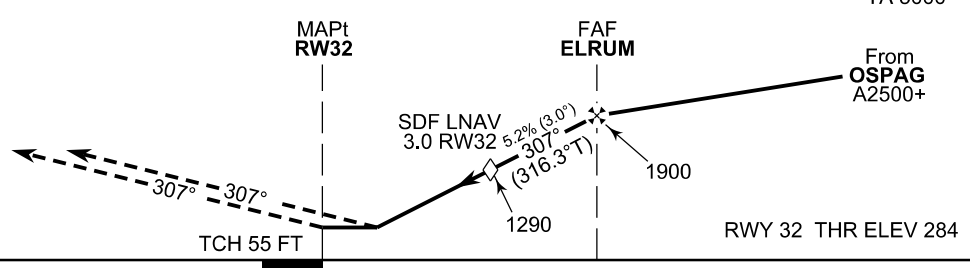


BRG are MAG
TR in brackets are TRUE
DIST in NM
ELEV, ALT and HGT in FT
SPEED in KT



CHG: ADDN D124D

MISSED APPROACH
Proceed FM RW32 to ULRAT
climbing to 2500



OCA (H)	A	B	C
LPV	514 (231)	526 (243)	536 (253)
LNAV/VNAV	537 (254)	549 (266)	557 (274)
LNAV	660 (380)		
Circling	730 (430)	800 (500)	980 (680)

DIST FM THR	2.0 NM	3.0 NM	4.0 NM			
Altitude (Height)	980 (690)	1290 (1010)	1610 (1330)			
	kt	90	100	120	140	160
FAF - MAPt 4.9 NM	min:sec	3:16	2:57	2:27	2:06	1:50
Rate of descent	ft/min	480	530	640	740	850

Timing not authorized for defining the MAPt

EFSI RNP RWY 32										
PROC ID NAV SPEC	SEQ NR	P/T	WPT			MAG	GEO TR	DIST NM	Constraints	
			ID	Type	Flyover				LVL	Speed
H32 NESPU RNP APCH	005	IF	NESPU	IAF	-				A2500+	K230-
	010	TF	OSPAG	IF	-	037°	046.3°T	5.0	A2500+	
	020	TF	ELRUM	FAF	-	307°	316.4°T	4.3	A1900+	
	030	TF	RW32	MAPt	Y	307°	316.3°T	4.9		
	040	TF	ULRAT	MAHF	Y	307°	316.2°T	10.6	A2500	

EFSI RNP RWY 32										
PROC ID NAV SPEC	SEQ NR	P/T	WPT			MAG	GEO TR	DIST NM	Constraints	
			ID	Type	Flyover				LVL	Speed
H32 OSPAG RNP APCH	010	IF	OSPAG	IAF/IF	-				A2500+	
	020	TF	ELRUM	FAF	-	307°	316.4°T	4.3	A1900+	
	030	TF	RW32	MAPt	Y	307°	316.3°T	4.9		
	040	TF	ULRAT	MAHF	Y	307°	316.2°T	10.6	A2500	

EFSI RNP RWY 32										
PROC ID NAV SPEC	SEQ NR	P/T	WPT			MAG	GEO TR	DIST NM	Constraints	
			ID	Type	Flyover				LVL	Speed
H32 RIRTO RNP APCH	005	IF	RIRTO	IAF	-				A2500+	K230-
	010	TF	OSPAG	IF	-	217°	226.5°T	5.0	A2500+	
	020	TF	ELRUM	FAF	-	307°	316.4°T	4.3	A1900+	
	030	TF	RW32	MAPt	Y	307°	316.3°T	4.9		
	040	TF	ULRAT	MAHF	Y	307°	316.2°T	10.6	A2500	

RNAV Holdings							
ID	INBD TR	INBD MAG	Turn Direction	Speed	MNM HLDG LVL	TIME	DIST NM
OSPAG	316.2°T	307°	Left	K230-	A2500	1 MIN	-
ULRAT	226.1°T	217°	Right	K230-	A2500	1 MIN	-

WPT COORD
SEE PAGE EFSI AD 2.15 - 1

FINAL APPROACH PARAMETERS			
LNAV Gradient	Baro-VNAV		TCH
	VPA	MNM T	
5.24 % (3.00°)	3.00°	-20°C	55 FT

SBAS DATA	
Approach ID	E32A
Service Provider	EGNOS
CRC remainder	E8 F9 55 32
Channel number	85447
Data Block	SEE EFSI AD 2.15 - 9