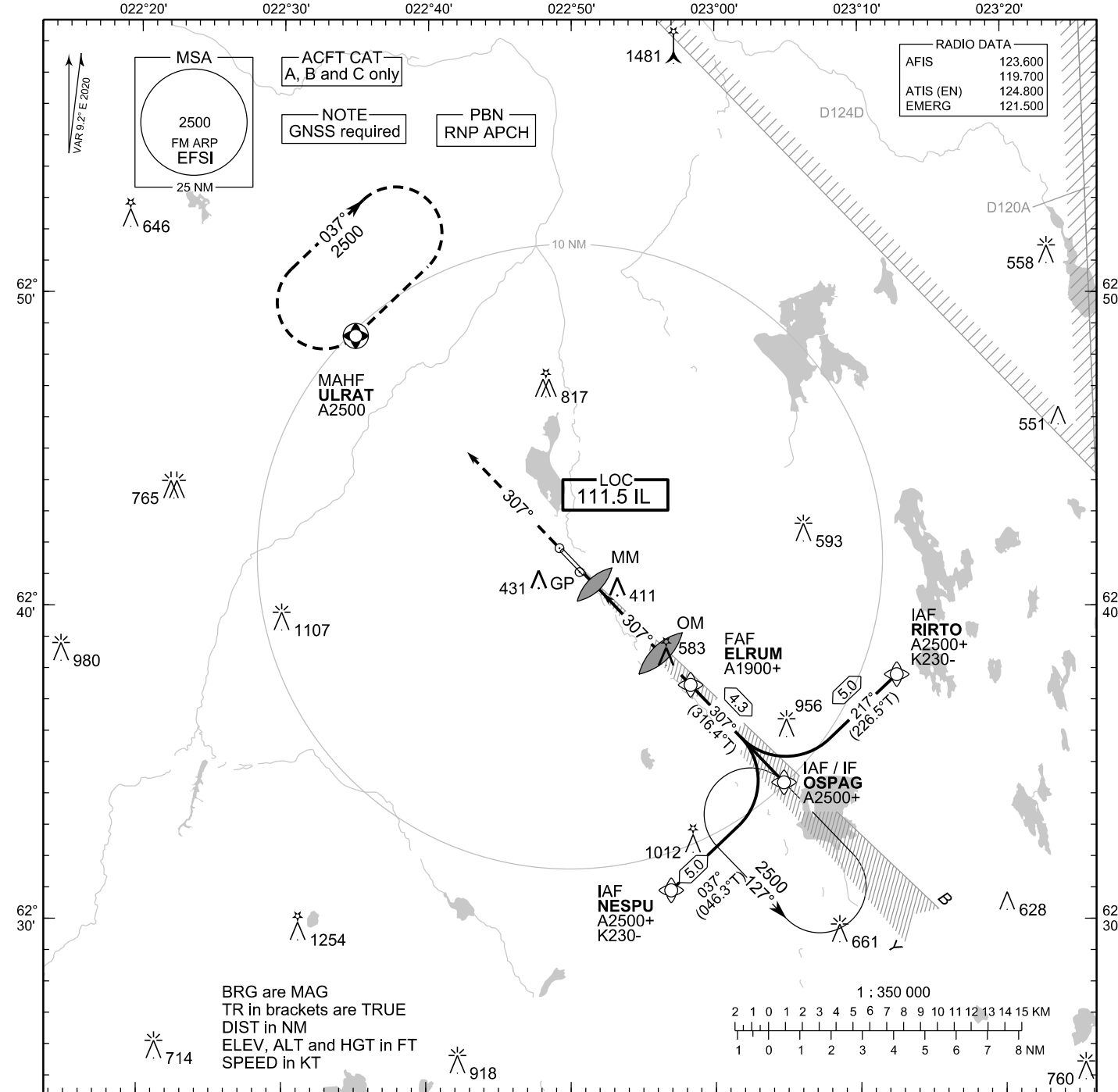


INSTRUMENT APPROACH CHART - ICAO

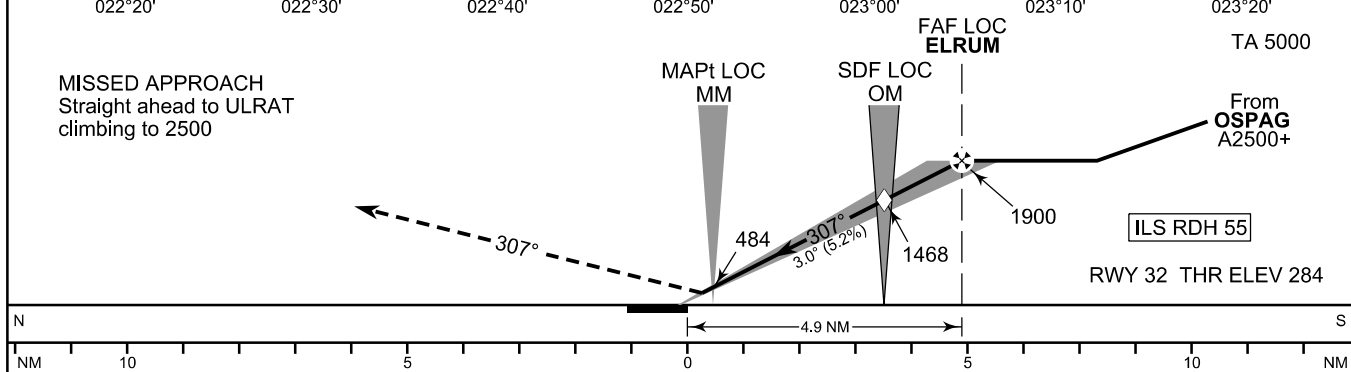
ELEV 303 FT
HEIGHTS RELATED TO
THR RWY 32 ELEV 284 FT

**ILS Z or LOC Z RWY 32
SEINÄJOKI AERODROME
SEINAJOKI, FINLAND**



CHG: ADDN D124D

MISSED APPROACH
Straight ahead to ULRAT
climbing to 2500



OCA (H)	A	B	C
ILS CAT I	438 (155)	448 (165)	460 (177)
LOC	660 (380)		
LOC WO SDF	1470 (1190)		
Circling	730 (430)	800 (500)	980 (680)

kt	90	100	120	140	160	
FAF - MAPt 4.4 NM	min:sec	2:58	2:40	2:13	1:54	1:40
Rate of descent	ft/min	480	530	640	740	850

Timing not authorized for defining the MAPt

EFSI ILS Z or LOC Z RWY 32										
PROC ID NAV SPEC	SEQ NR	P/T	WPT			MAG	GEO TR	DIST NM	Constraints	
			ID	Type	Flyover				LVL	Speed
I32 NESPU RNP APCH	005	IF	NESPU	IAF	-				A2500+	K230-
	010	TF	OSPAG	IF	-	037°	046.3°T	5.0	A2500+	
	020	TF	ELRUM	FAF LOC	-	307°	316.4°T	4.3	A1900+	
	030	TF	MM	MAPt LOC	Y					
	040	CA	-	-	-	307°	316.2°T	-	A800+	
	050	DF	ULRAT	MAHF	Y	-	-	-	A2500	

EFSI ILS Z or LOC Z RWY 32										
PROC ID NAV SPEC	SEQ NR	P/T	WPT			MAG	GEO TR	DIST NM	Constraints	
			ID	Type	Flyover				LVL	Speed
I32 OSPAG RNP APCH	010	IF	OSPAG	IAF/IF	-				A2500+	
	020	TF	ELRUM	FAF LOC	-	307°	316.4°T	4.3	A1900+	
	030	TF	MM	MAPt LOC	Y					
	040	CA	-	-	-	307°	316.2°T	-	A800+	
	050	DF	ULRAT	MAHF	Y	-	-	-	A2500	

EFSI ILS Z or LOC Z RWY 32										
PROC ID NAV SPEC	SEQ NR	P/T	WPT			MAG	GEO TR	DIST NM	Constraints	
			ID	Type	Flyover				LVL	Speed
I32 RIRTO RNP APCH	005	IF	RIRTO	IAF	-				A2500+	K230-
	010	TF	OSPAG	IF	-	217°	226.5°T	5.0	A2500+	
	020	TF	ELRUM	FAF LOC	-	307°	316.4°T	4.3	A1900+	
	030	TF	MM	MAPt LOC	Y					
	040	CA	-	-	-	307°	316.2°T	-	A800+	
	050	DF	ULRAT	MAHF	Y	-	-	-	A2500	

RNAV Holdings							
ID	INBD TR	INBD MAG	Turn Direction	Speed	MNM HLDG LVL	TIME	DIST NM
OSPAG	316.2°T	307°	Left	K230-	A2500	1 MIN	-
ULRAT	226.1°T	217°	Right	K230-	A2500	1 MIN	-

WPT COORD
SEE PAGE EFSI AD 2.15 - 1

FINAL APPROACH PARAMETERS			
LOC Gradient	ILS		RDH
	CAT	GPA	
5.24 % (3.00°)	I	3.00°	55 FT