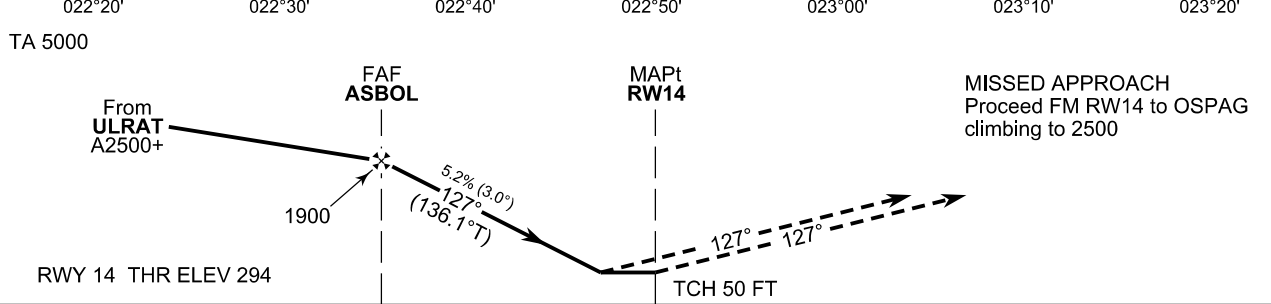
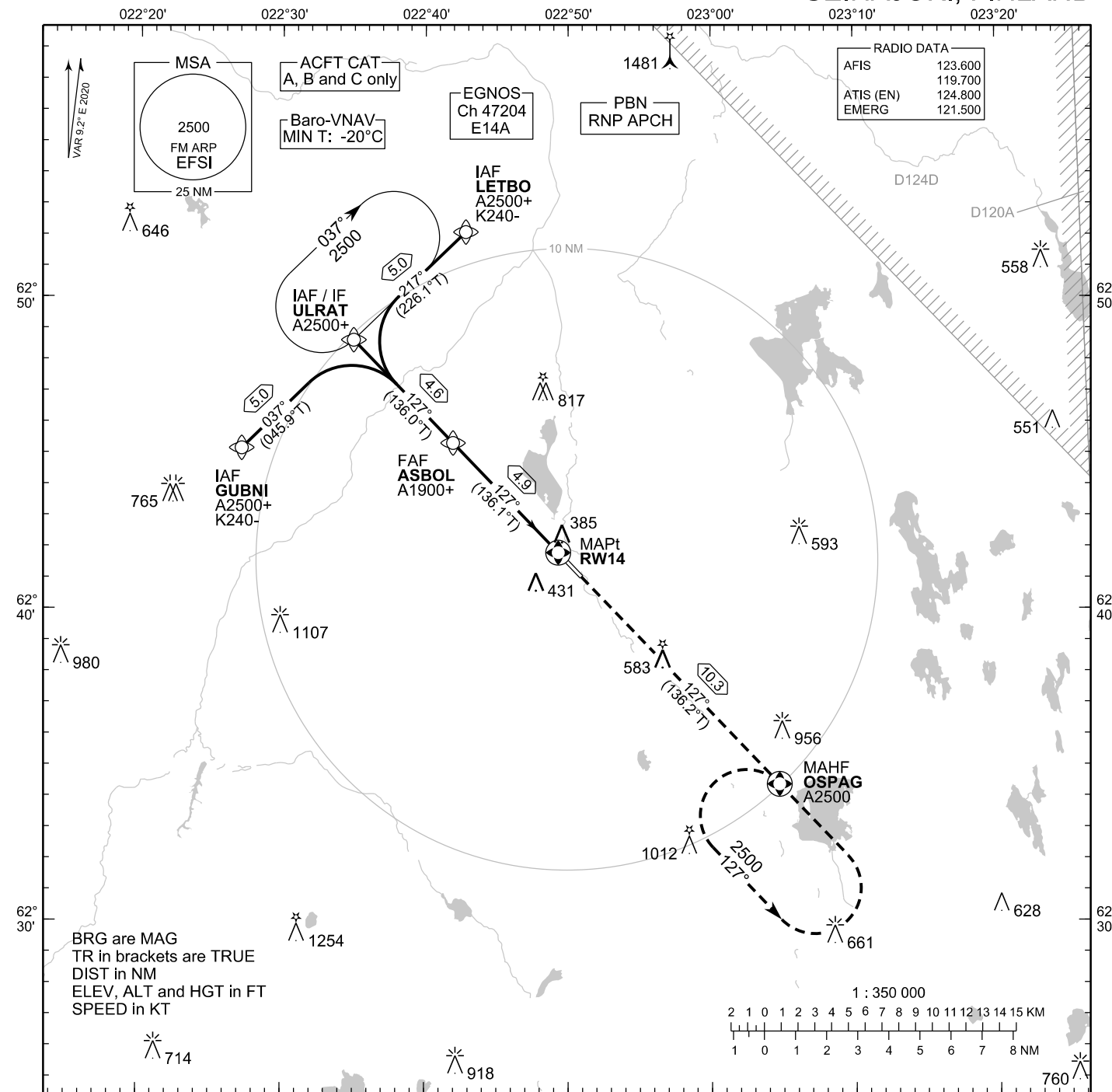


**INSTRUMENT
APPROACH CHART - ICAO**

ELEV 303 FT
HEIGHTS RELATED TO
THR RWY 14 ELEV 294 FT

**RNP RWY 14
SEINÄJOKI AERODROME
SEINÄJOKI, FINLAND**



CHG: ADDN D124D

OCA (H)	A	B	C
LPV	500 (207)	512 (219)	521 (228)
LNAV/VNAV	513 (220)	525 (232)	534 (241)
LNAV	640 (340)		
Circling	730 (430)	800 (500)	980 (680)

DIST FM THR	4.0 NM	3.0 NM	2.0 NM	1.0 NM		
Altitude (Height)	1620 (1320)	1300 (1010)	980 (690)	660 (370)		
	kt	90	100	120	140	160
FAF - MAPt 4.9 NM	min:sec	3:16	2:56	2:27	2:06	1:50
Rate of descent	ft/min	480	530	640	740	850

Timing not authorized for defining the MAPt

EFSI RNP RWY 14										
PROC ID NAV SPEC	SEQ NR	P/T	WPT			MAG	GEO TR	DIST NM	Constraints	
			ID	Type	Flyover				LVL	Speed
H14 LETBO RNP APCH	005	IF	LETBO	IAF	-				A2500+	K240-
	010	TF	ULRAT	IF	-	217°	226.1°T	5.0	A2500+	
	020	TF	ASBOL	FAF	-	127°	136.0°T	4.6	A1900+	
	030	TF	RW14	MAPt	Y	127°	136.1°T	4.9		
	040	TF	OSPAG	MAHF	Y	127°	136.2°T	10.3	A2500	

EFSI RNP RWY 14										
PROC ID NAV SPEC	SEQ NR	P/T	WPT			MAG	GEO TR	DIST NM	Constraints	
			ID	Type	Flyover				LVL	Speed
H14 ULRAT RNP APCH	010	IF	ULRAT	IAF/IF	-				A2500+	
	020	TF	ASBOL	FAF	-	127°	136.0°T	4.6	A1900+	
	030	TF	RW14	MAPt	Y	127°	136.1°T	4.9		
	040	TF	OSPAG	MAHF	Y	127°	136.2°T	10.3	A2500	

EFSI RNP RWY 14										
PROC ID NAV SPEC	SEQ NR	P/T	WPT			MAG	GEO TR	DIST NM	Constraints	
			ID	Type	Flyover				LVL	Speed
H14 GUBNI RNP APCH	005	IF	GUBNI	IAF	-				A2500+	K240-
	010	TF	ULRAT	IF	-	037°	045.9°T	5.0	A2500+	
	020	TF	ASBOL	FAF	-	127°	136.0°T	4.6	A1900+	
	030	TF	RW14	MAPt	Y	127°	136.1°T	4.9		
	040	TF	OSPAG	MAHF	Y	127°	136.2°T	10.3	A2500	

RNAV Holdings							
ID	INBD TR	INBD MAG	Turn Direction	Speed	MNM HLDG LVL	TIME	DIST NM
ULRAT	226.1°T	217°	Right	K230-	A2500	1 MIN	-
OSPAG	316.2°T	307°	Left	K230-	A2500	1 MIN	-

WPT COORD
SEE PAGE EFSI AD 2.15 - 1

FINAL APPROACH PARAMETERS			
LNAV Gradient	Baro-VNAV		TCH
	VPA	MNM T	
5.24 % (3.00°)	3.00°	-20°C	50 FT

SBAS DATA	
Approach ID	E14A
Service Provider	EGNOS
CRC remainder	A0 4C AD 7E
Channel number	47204
Data Block	SEE EFSI AD 2.15 - 9