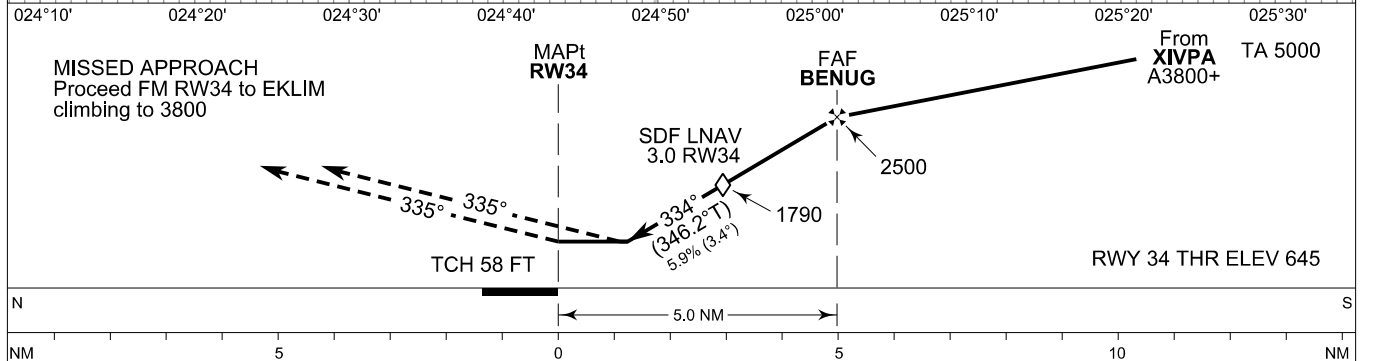
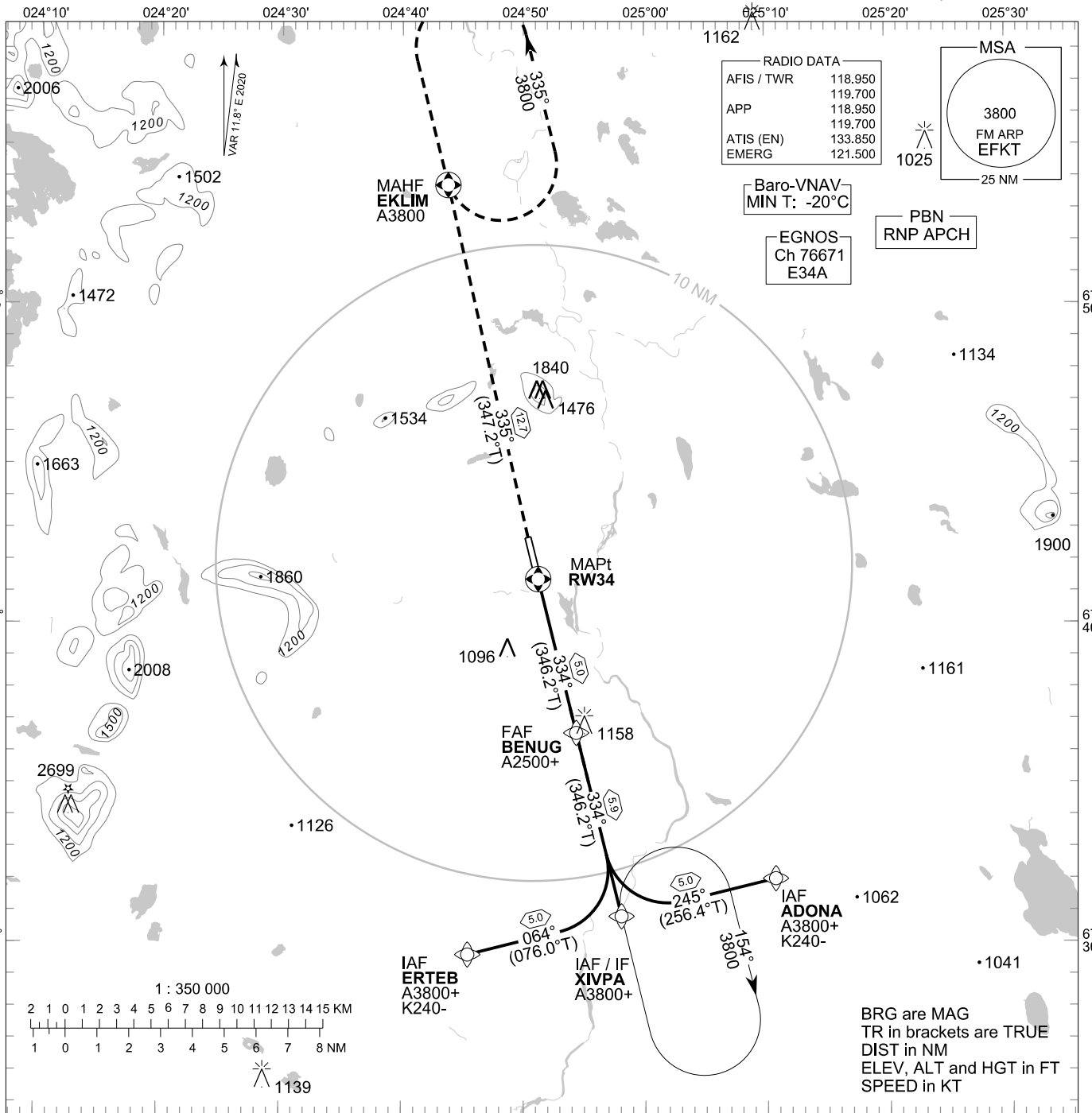


**INSTRUMENT
APPROACH CHART - ICAO**

ELEV 645 FT
HEIGHTS RELATED TO
THR RWY 34 ELEV 645 FT

**RNP RWY 34
KITILÄ AERODROME
KITILÄ, FINLAND**

CHG: MAG VAR; REF ELEV, FNA, OCA (H), ADDN LNAV/VNAV, LPV



OCA (H)	A	B	C	D
LPV	858 (214)	871 (227)	882 (238)	892 (248)
LNAV/VNAV	1054 (410)	1066 (422)	1089 (445)	1118 (474)
LNAV	1200 (560)	1220 (580)	1250 (600)	1270 (620)
Circling	1200 (560)	1400 (750)	1870 (1230)	2240 (1590)

DIST FM THR	2.0 NM		3.0 NM		4.0 NM	
Altitude (Height)	1420 (780)		1790 (1140)		2150 (1500)	
	kt	90	100	120	140	160
FAF - MAPt 5.0 NM	min:sec	3:19	2:59	2:29	2:08	1:52
Rate of descent	ft/min	540	600	720	840	960

Timing not authorized for defining the MAPt

EFKT RNP RWY 34										
PROC ID NAV SPEC	SEQ NR	P/T	WPT			MAG	GEO TR	DIST NM	Constraints	
			ID	Type	Flyover				LVL	Speed
H34 ERTEB RNP APCH	005	IF	ERTEB	IAF	-				A3800+	K240-
	010	TF	XIVPA	IF	-	064°	076.0°T	5.0	A3800+	
	020	TF	BENUG	FAF	-	334°	346.2°T	5.9	A2500+	
	030	TF	RW34	MAPt	Y	334°	346.2°T	5.0		
	040	TF	EKLIM	MAHF	Y	335°	347.2°T	12.7	A3800	

EFKT RNP RWY 34										
PROC ID NAV SPEC	SEQ NR	P/T	WPT			MAG	GEO TR	DIST NM	Constraints	
			ID	Type	Flyover				LVL	Speed
H34 XIVPA RNP APCH	010	IF	XIVPA	IAF/IF	-				A3800+	
	020	TF	BENUG	FAF	-	334°	346.2°T	5.9	A2500+	
	030	TF	RW34	MAPt	Y	334°	346.2°T	5.0		
	040	TF	EKLIM	MAHF	Y	335°	347.2°T	12.7	A3800	

EFKT RNP RWY 34										
PROC ID NAV SPEC	SEQ NR	P/T	WPT			MAG	GEO TR	DIST NM	Constraints	
			ID	Type	Flyover				LVL	Speed
H34 ADONA RNP APCH	005	IF	ADONA	IAF	-				A3800+	K240-
	010	TF	XIVPA	IF	-	245°	256.4°T	5.0	A3800+	
	020	TF	BENUG	FAF	-	334°	346.2°T	5.9	A2500+	
	030	TF	RW34	MAPt	Y	334°	346.2°T	5.0		
	040	TF	EKLIM	MAHF	Y	335°	347.2°T	12.7	A3800	

RNAV Holdings							
ID	INBD TR	INBD MAG	Turn Direction	Speed	MNM HLDG LVL	TIME	DIST NM
XIVPA	346.1°T	334°	Right	K230-	A3800	1 MIN	-
EKLIM	167.3°T	155°	Left	K230-	A3800	1 MIN	-

WPT COORD
SEE PAGE EFKT AD 2.15 - 1

FINAL APPROACH PARAMETERS			
LNAV Gradient	Baro-VNAV		TCH
	VPA	MNM T	
5.94 % (3.40°)	3.40°	-20°C	58 FT

SBAS DATA	
Approach ID	E34A
Service Provider	EGNOS
CRC remainder	9E 76 5A 40
Channel number	76671
Data Block	SEE EFKT AD 2.15 - 9